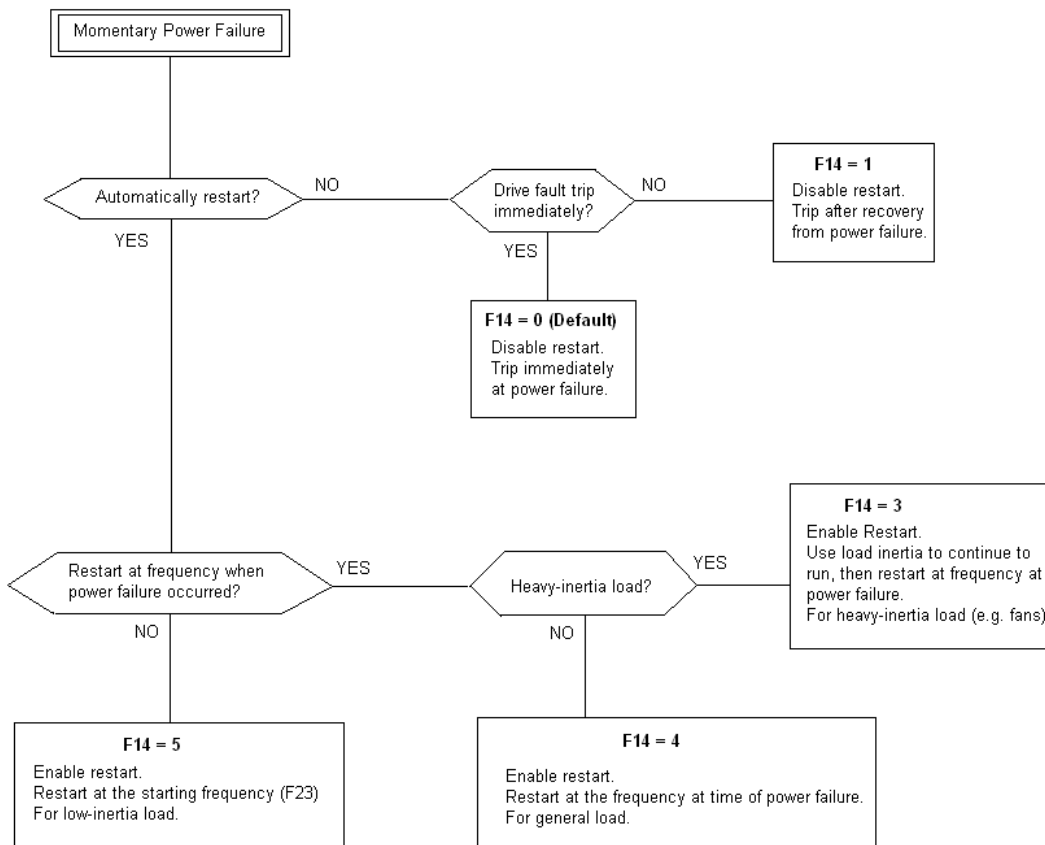


APPLICATION NOTE	FECA-AN-138
Automatic Restart after Power Failure	

Inverter type	FRENIC-Eco Series
Software version	All versions
Required options	None
Related documentation	FRENIC-Eco Instruction Manual INR-SI47-1225-E
Author	Shane Spencer
Date	2/9/2012
Revision	

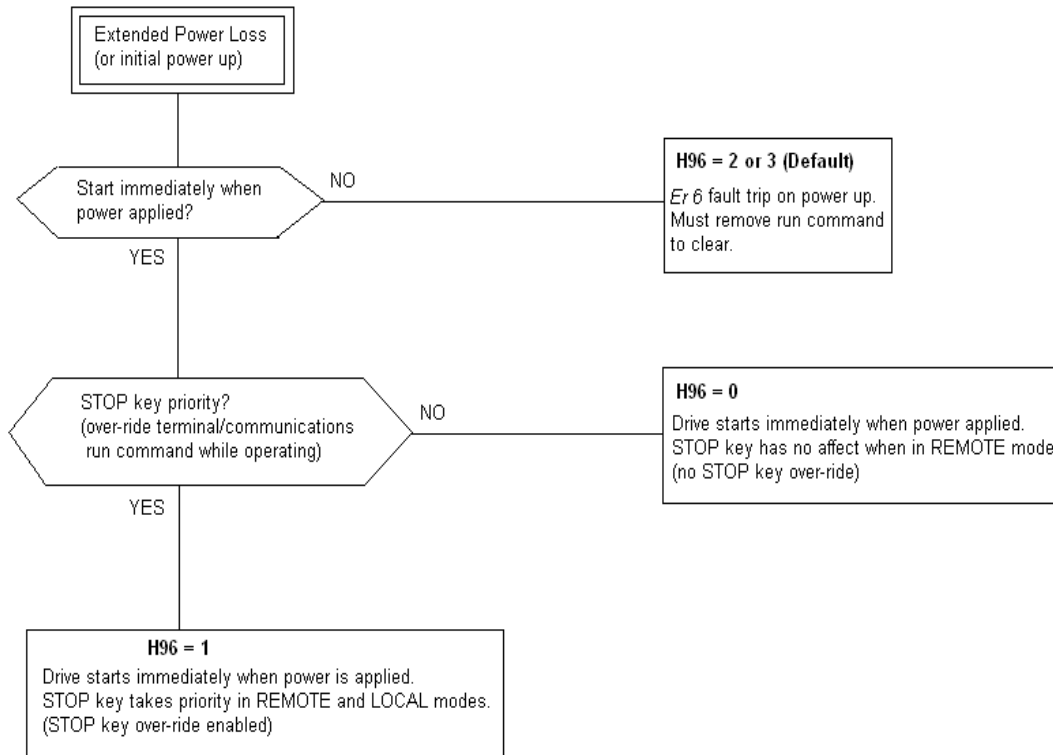
Introduction

This application note provides parameter setting flow charts for a **FRENIC-Eco** series drive to automatically restart after momentary and extended power failures.



Note: “Momentary” power failure means power loss for only a few seconds, no longer than half a minute during operation.

Note 2: Refer to **H13**, **H14**, and **H16** for



Note 1: In order for the drive to start operating immediately when power is applied (as displayed above), it must have a RUN command given by shorting the [FWD] or [REV] terminal with the [CM] terminal, and have parameter setting **F02 = 1**.

Note 2: Removing then giving power back to the drive should not be the primary means for starting and stopping. Doing so will shorten the life of the inverter significantly.

Note 3: Refer to **FRENIC-Eco Instruction Manual INR-S147-1225-E** for more information.