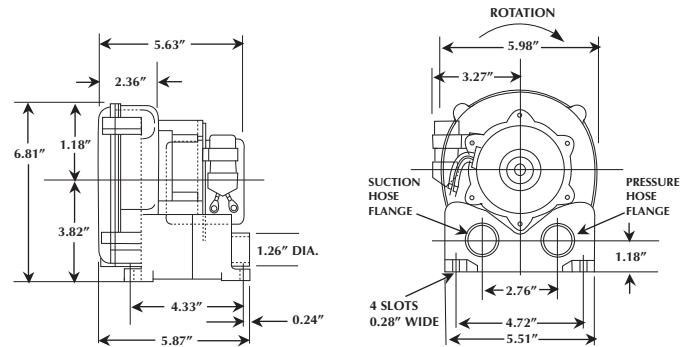




The VFC06 is a single-stage ring compressor with a maximum pressure of 10 in. H<sub>2</sub>O, a maximum vacuum of 9.7 in. H<sub>2</sub>O and a maximum capacity of 17.7 SCFM. It comes complete with a direct drive, 1/20 horsepower, TENV motor capable of operating on 115 volts, on 50 or 60 Hz. A built-in automatic reset thermal protector is standard. This version has NEMA class B insulation, is UL recognized, CSA certified, and CE.



## SPECIFICATIONS

Model No.	Hz	Voltage		Amps (Max. Rated)	Amps (Locked Rotor)	Max. Pressure	Max. Vacuum	Max. Airflow	Min. Airflow	Max. Temp Rise (ΔT)	Weight
		Low Voltage/High Voltage		in. H <sub>2</sub> O	in. H <sub>2</sub> O	SCFM	SCFM	°F(°C)	lbs.(kg)		
VFC063P-1T	60	115	0.56	1.2	10	9.7	17.7	0	54(30)	6.0(2.7)	
	50	110	0.4	0.9	7.5	7.3	14.7	0	36(20)		

## ACCESSORIES

Description	Vacuum Relief Valve	Pressure Relief Valve	Inlet Filter	Inlet Filter Cover	Exhaust Silencer/Muffler
Model No.	Not Req'd	Not Req'd	F-123	C-123	VFY-021A

**NOTE:** Maximum allowable time at deadhead is unlimited.

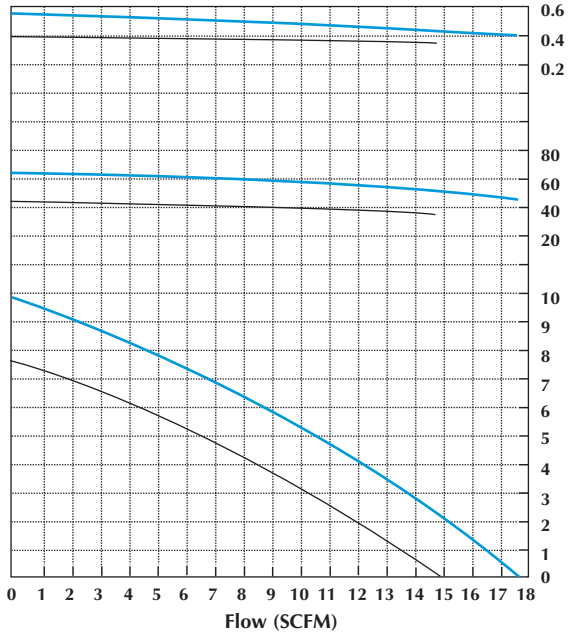


# VFC06 PERFORMANCE DATA

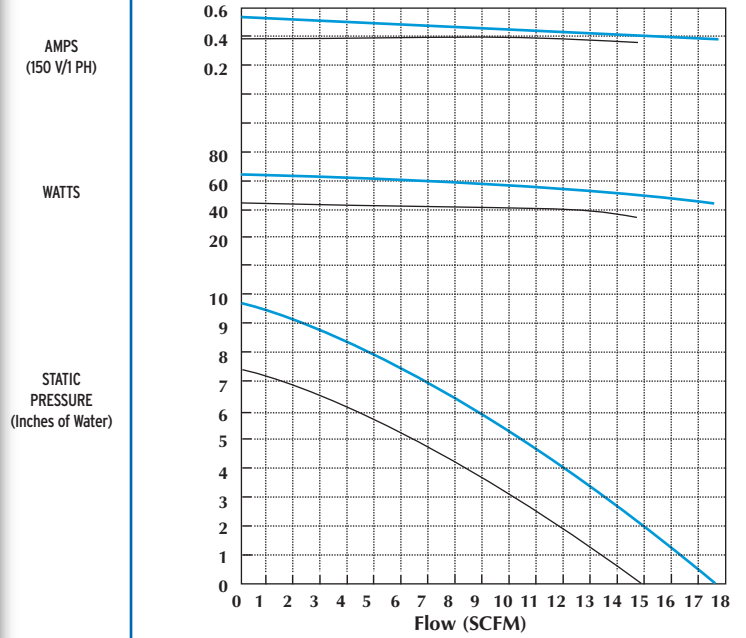
**KEY**

— 60 Hz  
— 50 Hz

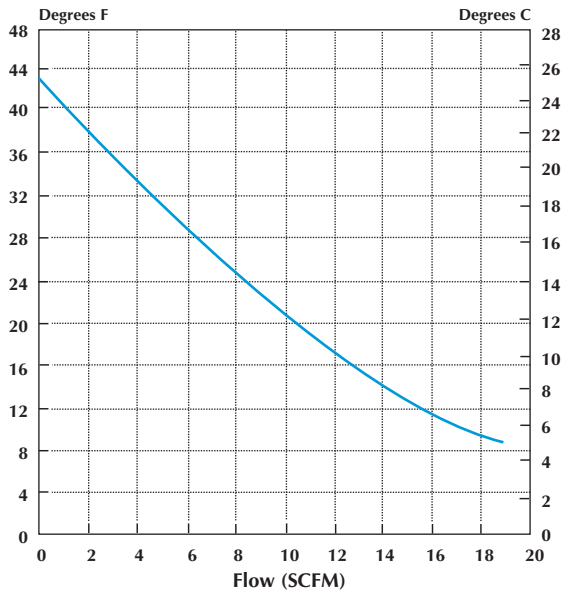
## PRESSURE



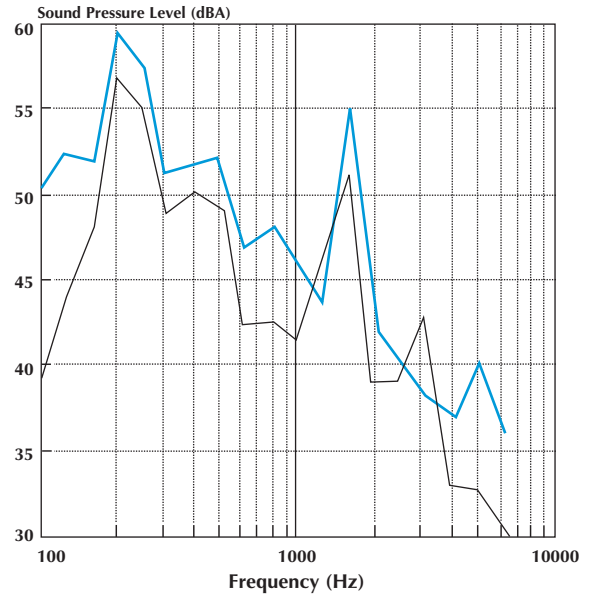
## VACUUM



## TEMPERATURE RISE



## SOUND LEVEL



\*Measured at distance of 1.0 meters