

Corporate Profile 2016





Contributing to the Creation of Sustainable Societies through Our Energy and Environment Businesses

Since our foundation in 1923, Fuji Electric has innovated energy technology to make broad contributions to the world in the fields of industrial and social infrastructure.

Now, through population growth and the rapid advance of industrialization, the world is facing energy and environmental issues. Building on its technology and experience, Fuji Electric aims to pursue innovation in energy and environment technology and to continue creating high-value-added, environmentally friendly products that use energy with maximum efficiency. We will also expand our energy and environment businesses around the world, work toward harmony with the ever-changing natural environment, and contribute to the realization of responsible and sustainable societies.

Acting in accordance with the slogan of “To be enthusiastic, ambitious and sensitive” contained in our Corporate Philosophy, the people at Fuji Electric act as a team to promptly meet the diverse needs of its customers by bringing together their vast array of individual talents.

We hope that you will hold Fuji Electric to high expectations.

Michihiro Kitazawa
President and
Representative Director

Brand Statement

Innovating Energy Technology

Corporate Philosophy

Corporate Mission

We, Fuji Electric, pledge as responsible corporate citizens in a global society to strengthen our trust with communities, customers and partners.

Our mission is to:

- Contribute to prosperity
- Encourage creativity
- Seek harmony with the environment

Slogan

To be enthusiastic, ambitious and sensitive.

Management Policies

- 1 Through our innovation in energy and environment technology, we contribute to the creation of responsible and sustainable societies.
- 2 Achieve further growth through our global business expansion.
- 3 Maximize our strengths as a team, respecting employees' diverse ambition.

Fuji Electric's Energy and Environment Businesses

With energy and environment technology as its core technology, Fuji Electric contributes to the creation of responsible and sustainable societies through its five business segments:

Power and Social Infrastructure, Industrial Infrastructure, Power Electronics, Electronic Devices, and Food and Beverage Distribution.

Power and Social Infrastructure

By generating environmentally friendly energy, Fuji Electric will respond to the growing demand for electricity while contributing to optimal energy management through the stabilization of electricity supplies and management of supply and demand.

- Power plants
 - Thermal, geothermal, and hydraulic power generation facilities
 - Solar power generation systems
 - Fuel cells
- Social engineering systems
 - Energy management systems
 - Smart meters
 - Information systems



Steam turbines



Fuel cells



Cluster energy management systems

Industrial Infrastructure

Fuji Electric supplies diverse customers in the fields of industry with productivity improvements, energy savings, and lifecycle services for production lines and infrastructure equipment.

- Transmission and distribution
 - Substation equipment and industrial power supply facilities
- Industrial plants
 - Industrial drive systems
 - Plant control systems
 - Industrial energy management systems
 - Data centers, distribution systems, plant factories
- Industrial and instrumentation equipment
 - Measuring instruments and sensors
 - Radiation monitoring systems



Substation equipment



Industrial drive systems



Data centers

Power Electronics

Fuji Electric supplies products that incorporate power electronics to improve the efficiency and stability of energy.

- Drives
 - Inverters, servos, motors
 - Controllers
 - Railcar systems
- Power supplies
 - Uninterruptible power systems
 - Power conditioning sub-systems
 - Switchboards
- ED&C components
 - Power distribution and control equipment



General-purpose inverters



Uninterruptible power systems

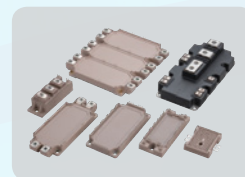


Magnetic switches

Electronic Devices

Fuji Electric supplies power semiconductors and other essential electronic devices to the fields of industrial equipment, automobiles, information equipment, and new energy.

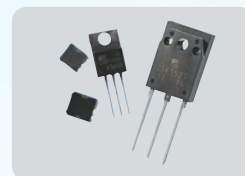
- Semiconductors
 - Power semiconductors
 - Photoconductors
- Magnetic disks
 - Magnetic recording media



IGBT modules



SiC modules

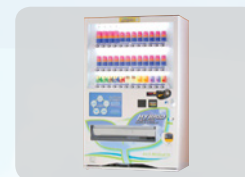


Power MOSFETs

Food and Beverage Distribution

With our freezing technology at the core, we integrated mechatronic technology and IT to offer optimal products and solutions to our customers.

- Vending machines
 - Food and beverage vending machines
- Store distribution
 - Store equipment
 - Currency handling equipment



Can and PET bottle vending machines



Vending machines for food and other goods (models for China and other Asian markets)



Freezers and refrigerated showcases

Power and Social Infrastructure

Fuji Electric is meeting growing demand for electricity through an array of equipment for power plants that enables highly efficient, environmentally friendly energy supplies. We are also helping to realize optimal energy management with our technologies for stabilizing power systems and managing supply and demand as well as with grid connection and distribution control technologies.

Responding to Diverse Electric Power Generation Needs

■ Power plants

Thermal Power Generation

In addition to designing and constructing the steam turbines and generators that form the heart of any thermal power generation system, Fuji Electric offers environmentally friendly combined-cycle power generation plants that feature outstanding power-generation efficiency and low CO₂ emissions.



Combined-cycle power generation plants



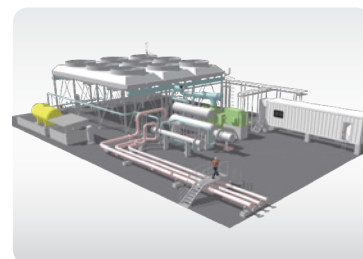
Steam turbines

Geothermal Power Generation

As the world's foremost manufacturer of geothermal power plants, Fuji Electric supplies turbines, generators, and other auxiliary machinery used in flash-cycle and binary-cycle power generation. In addition, we provide full turn key geothermal power generation systems.



Geothermal power generation plants



Binary power generation systems

Hydraulic Power Generation

Drawing on our extensive selection of turbines and generators—including micro-tubular turbines for micro-hydroelectric power generation and S-type tubular turbines for low-head small hydraulic power generation—we supply systems optimally suited to each site's specific requirements. We also provide comprehensive plant engineering, from design and production to onsite delivery and trial operation.



Micro-tubular turbines



Vertical bulb turbines

Solar Power Generation Systems

For our advanced solar power generation systems, Fuji Electric not only supplies the peripheral equipment essential for mega solar power generation, such as high-efficiency large-capacity power conditioning sub-systems, but also applies its expertise in engineering, procurement, and construction (EPC).



Solar power generation systems

Fuel Cells

Fuji Electric is working to popularize the usage of 100kW industrial-use phosphoric acid fuel cells. In this effort, we are concentrating on promoting these fuel cells as emergency-use power supplies that automatically switch over to stored propane gas if the supply of town gas is interrupted. In addition, we are promoting the use of fuel cells in renewable energy power supplies that generate power from bio gas.



Phosphoric acid fuel cells

Optimizing Energy

■ Social engineering systems

Energy Management

There is a rising need to secure a stable supply of electricity supported by the rapid spread of renewable energy and the deregulation of the electricity retail market in Japan. To address this need, Fuji Electric has augmented its lineup with supply and demand management systems as well as electric power storage systems for stabilizing electricity supplies. These offerings call upon its technologies for power distribution centers, power electronics, and smart meters. We strive to contribute to optimal energy management with such offerings.



Cluster energy management systems



Smart meters



Electricity storage centers



Electricity supply control centers



Industrial Infrastructure

In the industrial field, we enable stable energy supplies, heighten productivity, and realize energy savings by providing infrastructure such as substation equipment, production line equipment, and air-conditioning equipment as well as monitoring control systems and energy management systems for entire factories and industrial measuring instruments. We also offer services spanning the entirety of product lifecycles.

Stable Energy Supply

■ Transmission and distribution

Fuji Electric provides industrial power-supply infrastructural equipment that enables customers to stabilize production, improve productivity, and realize energy savings. This equipment includes substations, generators, and other power-supply equipment for electric power facilities, railways, factories, and buildings as well as high-capacity rectification equipment for aluminum smelters and chemical plants.



High-capacity transformers



Substation equipment



High-capacity rectification equipment



Molded transformers

Heightening Production Efficiency and Energy Savings

■ Industrial plants

In the industrial field, Fuji Electric provides total solutions for automating plants, improving productivity, saving energy, and stabilizing energy supplies.

Catering to customer needs in all lifecycle areas, we offer reliable industrial drives with strong track records, monitoring control systems, and factory energy management systems (FEMSs) that optimize the energy supply-demand balance of entire factories. We also provide steam-generation heat pumps that realize energy savings by recycling factory exhaust heat as well as solutions for data centers and total engineering for distribution centers and plant factories that optimize energy usage.



Industrial drive systems



Plant monitoring and control systems



Factory energy management systems (FEMSs)
(Lower left photograph of cogeneration system of 2G)



Steam-generation heat pumps



Data centers



Plant factories
(Complex environment control systems)

Realizing Visualization in an Array of Areas

■ Industrial and instrumentation equipment

At customer facilities, Fuji Electric enables visualization—and thereby contributes to safety and peace of mind—by providing measuring instruments and sensors, such as aerosol analyzers that aid PM2.5 reduction, gas analyzers, and radiation equipment.

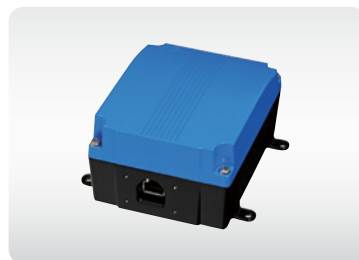
Furthermore, we offer a comprehensive lineup of environmentally friendly industrial electric-heating products that play an important role in initiatives focused on improving the global environment and creating a low-carbon society. In this manner, we have established a lineup of industrial equipment capable of responding to customers' various needs.



Aerosol analyzers (for analyzing PM2.5)



Gas analyzers



Vibration sensors (MEMS* accelerometers)
* MEMS: Micro electro mechanical systems



Personal dosimeters

Power Electronics

Over a broad range of areas that encompasses industrial and social infrastructure—where there is growing demand for saving energy—we improve energy efficiency and stability by supplying products that employ power electronics and merge power semiconductor technologies, circuit technologies, and control technologies.

Supporting the Increased Power and Energy Efficiency of Equipment and Machinery

■ Drives

Drive Systems

Fuji Electric has an extensive lineup of industrial-use inverters, which are key devices that contribute to the automation, labor-saving, and energy-saving attributes of industrial machinery, equipment, devices, and air-conditioning systems. We also supply motors and motor application products that perform critical roles in a range of fields and applications, including fans, pumps, and large-scale plants. With a product lineup containing a diverse range of series, Fuji Electric provides products for responding to needs for compact and low-noise machines and also offers internal magnet-type synchronous drive systems and servo systems as well as products compatible with top runner motors, which contribute to further energy savings.

In addition, we promote factory automation with programmable controllers and programmable operation displays that enable optimal control of servo systems and inverters.



General-purpose inverters



Medium-voltage inverters



General-purpose motors



Medium-voltage motors



Programmable controllers



Programmable displays

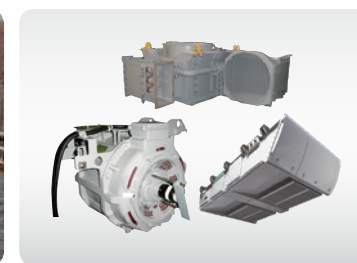
Supporting Safe and Comfortable Transportation

Railcar systems

In addition to the traction converters and traction motors used to control the running of high-speed rail and other rail lines, we offer linear motor-driven door systems.



Linear motor-driven door systems for passenger boarding and disembarkation



Drive systems for high-speed railcars

Supporting the Stable Supply of Electric Power

■ Power supplies

Power Systems

Fuji Electric offers switching power supply systems for embedding in information devices and facilities equipment such as servers and supercomputers; uninterruptible power systems (UPS) to handle power source troubles such as outages and voltage fluctuations; and power conditioning sub-systems (PCS) that efficiently convert electricity.



Uninterruptible power systems



Power conditioning sub-systems

Switchboards

From power generation to transmission and distribution and on to receipt of electricity by consumers, we provide operation, protection, and monitoring equipment for the stable supply of electric power across a wide domain. Moreover, with regard to environmental resistance, we supply power distribution equipment, which serves an important role.



Medium-voltage equipment



Motor control centers

Supporting Safe Equipment Operation

■ ED&C components

Power Distribution and Control Equipment

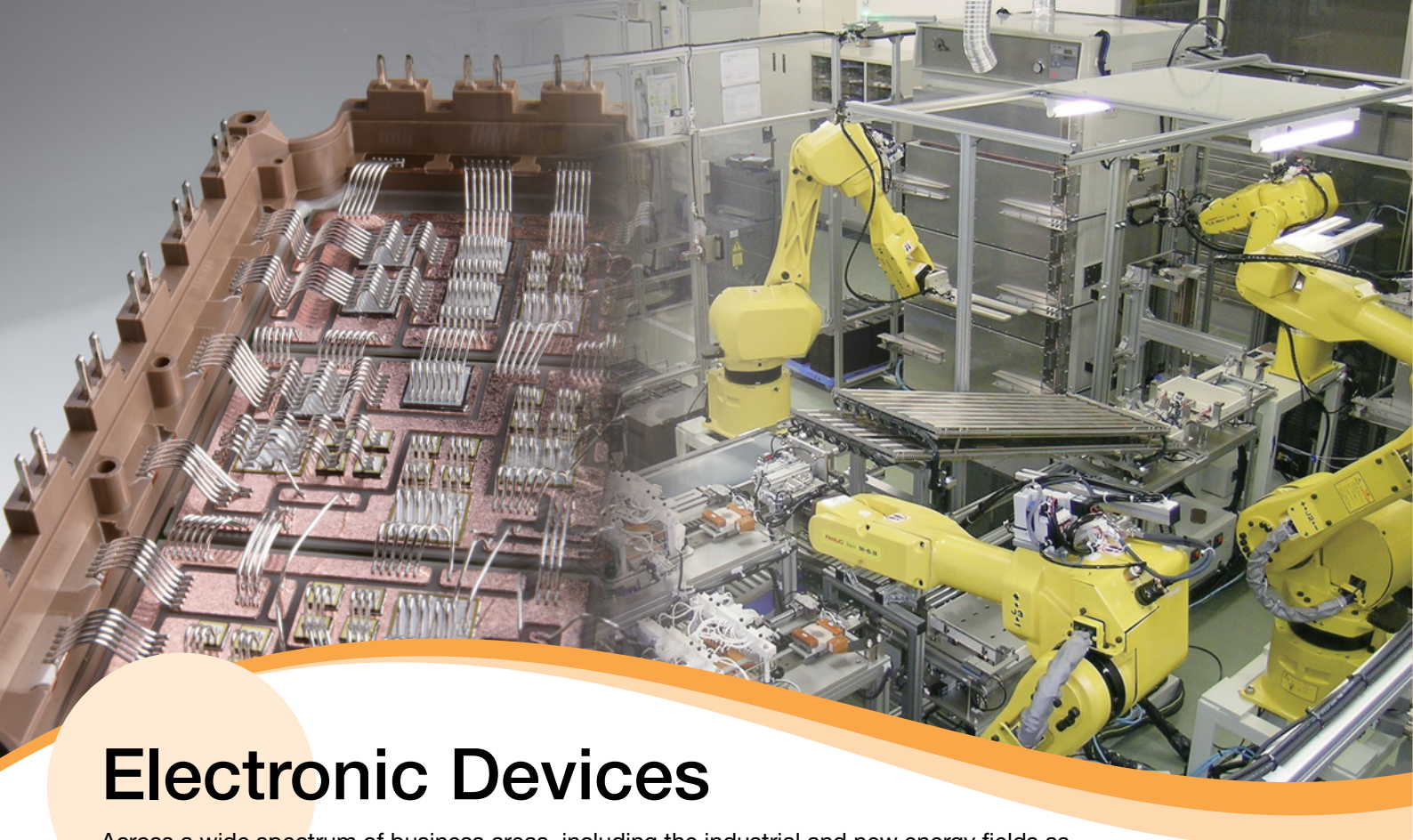
Fuji Electric offers power distribution and control equipment such as magnetic switches and molded-case circuit breakers for manufacturing equipment and other machinery in factories, so as to meet the customers' needs for energy saving and safety improvement.



Magnetic switches



Molded-case circuit breakers



Electronic Devices

Across a wide spectrum of business areas, including the industrial and new energy fields as well as the automotive and power supply fields, we contribute to high levels of efficiency and energy savings by supplying power semiconductors, which are key devices in power electronics. We also provide organic photoconductive drums that enable higher printing quality and magnetic disks that are used as recording media in IT equipment.

Performing Electrical Power Control and Conversion without Waste

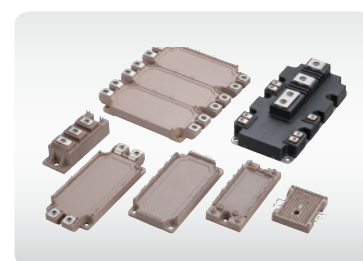
■ Semiconductors

Power Semiconductors

Industrial and New Energy Fields

Fuji Electric supplies IGBT modules that meet the high quality standards and exacting requirements for power conversion efficiency of industrial machinery and wind power and solar power generation equipment in plants and buildings. Our aim is to help create products that are more compact and realize greater energy savings through developing even higher performance semiconductor components—such as RB-IGBT^{*1} modules and SiC devices—and to offer products that incorporate our advanced packaging technology.

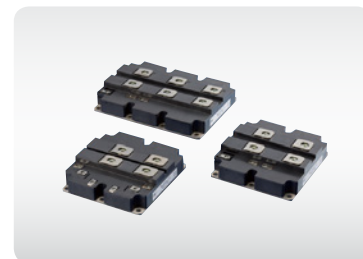
^{*1} RB-IGBT: Reverse-blocking insulated gate bipolar transistor
^{*2} IPMs: Intelligent power module



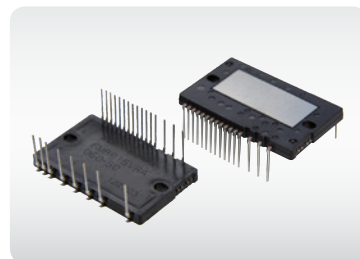
7th-generation IGBT modules



All-SiC modules



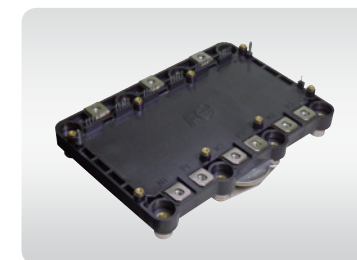
Advanced NPC3-level modules



Small-capacity IPMs^{*2}

Automotive Field

Fuji Electric provides key devices for the control of engines, brakes, and steering as well as for the motor drives and battery charging of electric vehicles and hybrid electric vehicles. Through our proprietary direct liquid-cooling technology and single-chip power IC technology, we provide key devices that are compact, light, and highly reliable.



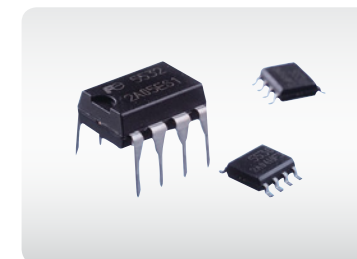
Direct liquid-cooling power modules for automotive applications



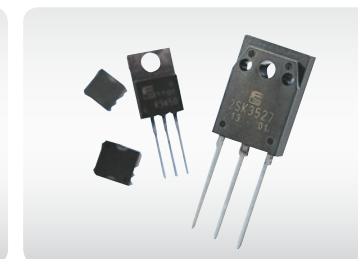
Pressure sensors

Power Supply Field

Fuji Electric's proprietary technology for high blocking voltage, low power dissipation devices is incorporated into its control ICs and high blocking voltage discrete devices for power supplies. We supply these ICs and devices for use in industrial and telecommunications equipment, servers, and flat-screen televisions.



Power supply control ICs

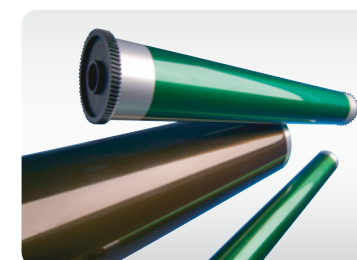


Power MOSFETs

Improving Printer Capabilities

Photoconductors

For home and the office, Fuji Electric provides organic photoconductive drums for printers as well as multifunction peripherals, which support fast, high-definition document representation.

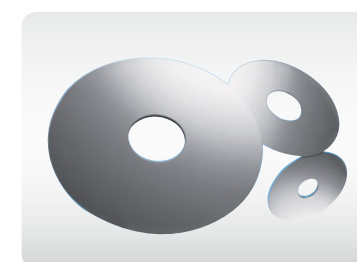


Photoconductors

Higher Performance and Larger Capacity of Information Equipment

■ Magnetic disks

Fuji Electric provides magnetic disks (magnetic recording media) that are incorporated into hard disk drives. We apply industry-leading technology to enhance the performance and capacity of information equipment.



Magnetic recording media



Food and Beverage Distribution

In the food distribution field, we are helping to create a recycling-based society by providing ideal products and solutions. In these efforts, we utilize core heating and cooling technologies, mechatronic technologies, and system technologies merged with information technologies.

Meeting Diverse Needs

■ Vending machines

As a leader in the industry, Fuji Electric is actively working to expand the use of environmentally friendly vending machines with advanced energy-saving features, and to respond to customers' diverse needs with an abundant variety of products, ranging from can and PET bottle vending machines to cup and food vending machines. Also, through beverage equipment such as automatic tea dispensers, we contribute to labor savings in the workplace.



Hybrid heat pump can/PET vending machines



Cup vending machines



Food vending machines



Vending machines for food and other goods (models for China and other Asian markets)



Automatic tea dispensers

Contributing to Society through Further Energy Savings

■ Store distribution

Fuji Electric combines core technologies for energy, IT-enabled control, and cooling to provide customers with food distribution that ensures safety, security, freshness, and maximum flavor. We offer a varied menu of products and solutions, including energy-saving freezers and refrigerated showcases that allow our customers to display products in any manner they may require, environmentally friendly energy management systems that provide comprehensive control, and next-generation cold storage containers that enable low-cost operation.



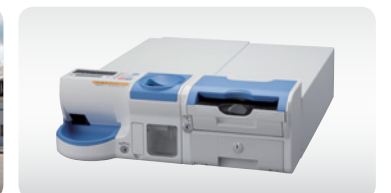
Multi-shelf showcases



Reach-in showcases



Environmentally friendly stores



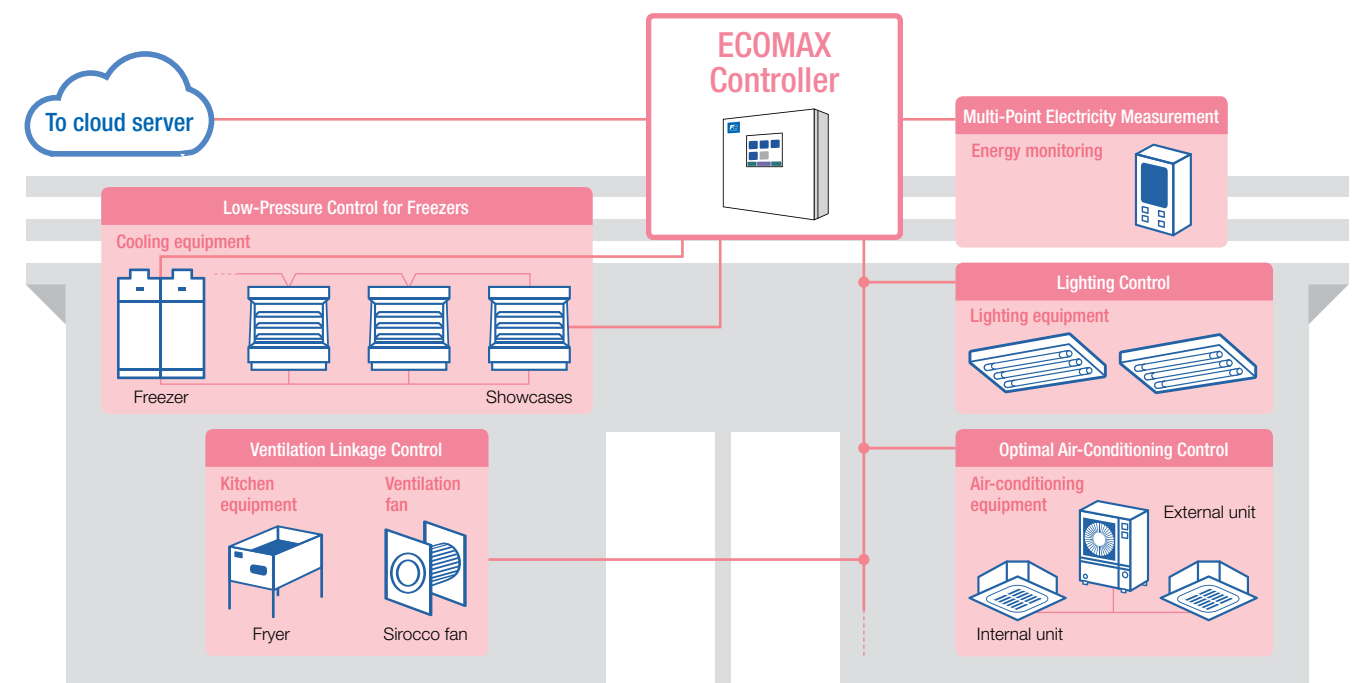
Automatic change dispensers



Energy management systems

Energy Management Systems

Energy consumption of an entire store can be reduced with a next-generation controller that integrates energy saving with energy management function and features enhanced device linkage and power control functions.



Services

We improve customers' productivity by stabilizing equipment operation and reducing overall maintenance costs.

At Fuji Electric, after delivering equipment and other products to our customers, we support those customers in achieving operational safety, reducing overall maintenance costs, and improving the productivity of their equipment by providing a range of maintenance services throughout the equipment lifecycle. These services include operational support, preventive maintenance, improvement proposals, and replacement plans.

To maximize customer satisfaction, we have established an infrastructure that enables us to provide lifecycle services, which include nationwide service centers, call centers in Japan and overseas that are open 24 hours a day, 365 days a year, and logistics systems, and we have, moreover, expanded our lineup of new cloud-based services.



Lifecycle Services That Solve Customers' Problems



Manufacturing

We are heightening our manufacturing capabilities by stepping up efforts to enhance onsite capabilities, manufacturing technologies, and human resource capacities.

Aiming to manufacture products that satisfy customers in all respects, including in relation to quality, cost, and delivery, Fuji Electric has used original technologies to build optimal production lines and equipment. To heighten such manufacturing capabilities, we are redoubling efforts to enhance onsite capabilities—which we have strengthened by restructuring supply chains—manufacturing technologies, and human resource capacities. Such efforts are boosting our competitiveness even further.

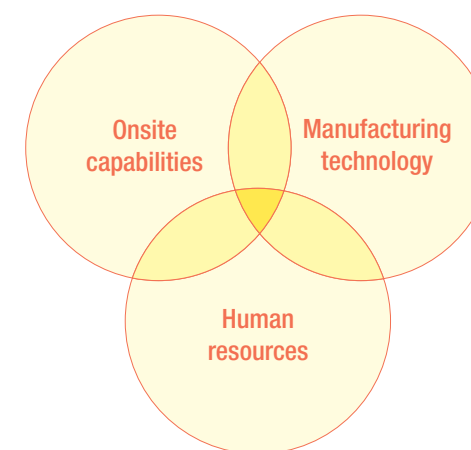
With Japan acting as the mother base (plant), we are pushing forward with initiatives to strengthen our global production network in accordance with our policy of pursuing local design, local production, and local consumption.



The Three Pillars for Enhancing Our Manufacturing Prowess



The ability to enhance product-manufacturing skills, manage and maintain sites, improve productivity, and reduce costs



The ability to develop manufacturing methods, production processes, and production equipment for mass production in step with product development



The capacity to develop the human resources underpinning manufacturing operations and help them hone their skills and techniques

Facility Technology Center

Functioning as the mother base of Fuji Electric's production technology, this center concentrates on production technology development (advancing automation), equipment production (equipment design and production), and technical and skills training (fostering production engineers, technicians, and global personnel).



Facility Technology Center

- Production technology development
- Equipment production
- Technical and skills training

Research and Development (R&D)

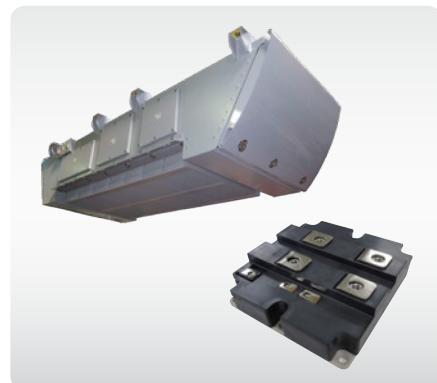
Through innovations made in energy and environment technology, Fuji Electric will create products that will help realize a sustainable society.

Fuji Electric seeks to provide solutions that efficiently and safely create and utilize electrical and thermal energy. To this end, we are pushing forward with R&D of core power electronics and power semiconductor technologies as well as instrumentation, control, IoT, and other system technologies that utilize these core technologies. Moreover, we are accelerating R&D through open innovation with research institutions and universities in Japan and overseas. As we advance initiatives for international standardization in conjunction with the globalization of our business, we are strengthening our portfolio of patents for important products and strategic development themes to promote an intellectual property strategy that is closely aligned with our business and R&D strategies.



R&D Policies

Expansion and enhancement of our core technologies through the synergy of our fortes in power semiconductors and power electronics



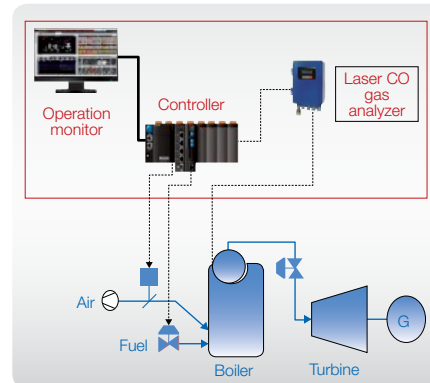
SiC power semiconductor module and main converter for Tokaido Shinkansen railcar

Expanding system technologies that leverage unique sensor, control, information and communications, and IoT technologies



Small- and medium-scale monitoring and control system MICREX-View XX

Developing solutions that contribute to energy savings and automation

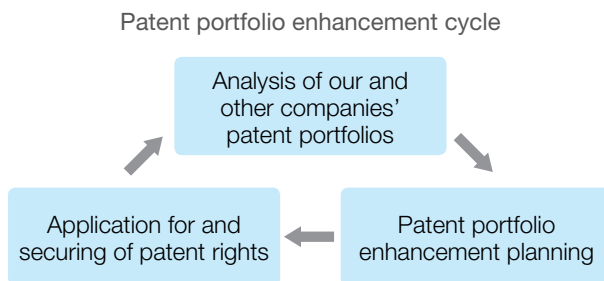


Fuel-saving boiler combustion solutions

Intellectual Property Risk Management

Fuji Electric advances its intellectual property strategy in close coordination with its business strategy and R&D strategy. In particular, as our business becomes more global we are strengthening our patent portfolio* for major products and strategic development themes, and we are also strengthening systems at our overseas sites to reduce intellectual dispute risks and prevent leaks of technology overseas.

* Patent portfolio: The concept of assessing and evaluating the patents held by the Company in the aggregate.



Corporate Social Responsibility (CSR)

Fuji Electric carries out its mission with integrity as a good corporate citizen in global society.

Fuji Electric views CSR as the act of exercising of its Corporate Philosophy and its Management Policies. To facilitate the promotion of CSR, we have established the six-point Fuji Electric Code of Conduct as a policy by which the Company and all employees come together as one under shared common values. The Code of Conduct reflects the Ten Principles in four areas of the United Nations Global Compact*, which we are now endeavoring to aspire to after announcing our participation in February 2010. Fuji Electric is working to resolve social issues through its energy and environment businesses, aiming to always be a company trusted by stakeholders around the world.

* The United Nations Global Compact: Proposed in 1999 by the Secretary-General of the United Nations, this compact calls on companies to voluntarily comply with and practice 10 principles in the areas of human rights, labor, the environment, and anti-corruption.



Initiatives under the Code of Conduct

1. Respect and value our customers

Through safe and superior products, services, and technological development in response to needs, we offer maximum satisfaction to customers.



Call center that operates 24 hours a day, 365 days a year

2. Respect and value all people

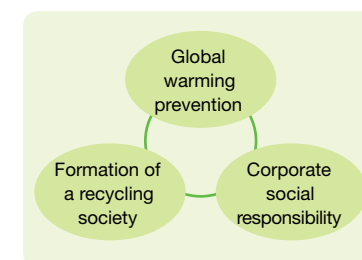
Accepting the diversity of all our employees, we work toward human resource development and the creation of workplace environments to allow all employees to act to their full potential.



A role-model seminar for female employees

3. Respect and value the global environment

We have formulated Environmental Vision 2020 and are actively undertaking initiatives aimed at environmental conservation and biodiversity.



Environmental Vision 2020

4. Respect and value our shareholders and investors

Fuji Electric is deepening mutual understanding and a relationship of trust with shareholders and investors through sincere and active information disclosure and communication.



Factory tour for shareholders

5. Respect and value interaction with society

Fuji Electric cooperates with NPOs, NGOs, and other organizations to develop its social contribution activities globally, with a focus on themes such as "environmental conservation" and "support for nurturing next generations."



Cleanup activities at Manila Bay in the Philippines

6. Respect, value, and conform with all applicable laws and regulations

Fuji Electric establishes and conducts compliance programs at all subsidiaries. Throughout the company, we work toward thorough global compliance with laws, regulations, and corporate ethics.



Compliance training

Fuji Electric continues to evolve in step with the times and society, with technology as its driving force.

Corporate History

1923
■ **Fuji Electric Manufacturing Co., Ltd., established**
Established as a capital and technology alliance between Japan Furukawa Electric Co., Ltd., and German Siemens AG. The result is a company with characteristics inherited from industry in both countries.



1924
■ **Began operation of the Kawasaki Factory**

1935
■ **Established Fuji Tsushinki Manufacturing Co., Ltd. (present Fujitsu Limited), by spinning off the Telephone Department**

1942
■ **Began operation of the Matsumoto Factory**

1943
■ **Began operation of the Fukiage and Toyoda factories**

1944
■ **Began operation of the Mie Factory**

1961
■ **Began operation of the Chiba Factory**

1968
■ **Merged with Kawasaki Denki Seizo Co., Ltd., and commenced operations at the Kobe and Suzuka factories**

1973
■ **Began operation of the Otawara Factory**

1984
■ **Changed company name to Fuji Electric Co., Ltd.**

1991
■ **Began operation of the Yamanashi Factory**

2002
■ **Introduced Company symbol mark**

2003
■ **Changed name to Fuji Electric Holdings Co., Ltd., owing to shift to pure holding company system**

2008
■ **Established METAWATER Co., Ltd., (joint venture with NGK Insulators, Ltd.)**

■ **Fuji Electric FA Components & Systems Co., Ltd., merged operation with Schneider Electric Japan Ltd. (Power distribution and control equipment joint venture)**

2011
■ **Changed company name to Fuji Electric Co., Ltd.**
■ **Established GE Fuji Meter Co., Ltd. (joint venture with General Electric)**

2012
■ **Introduced brand statement**

Innovating Energy Technology

2013
■ **Began operation of the factory at Fuji Electric Manufacturing (Thailand) Co., Ltd.**

2014
■ **Created new corporate brand emblem for products**



■ **Established Fuji SMBE Pte. Ltd. (Singapore)**

2015
■ **Established Reliable Turbine Services LLC (United States)**
■ **Completed new power semiconductor research and development building at Matsumoto Factory**
2016
■ **Established Fuji N2telligence GmbH (Germany)**
■ **Established Fuji CAC Joint Stock Company (Vietnam)**
■ **Established Fuji SEMEC Inc. (Canada)**
■ **Completed new Companywide research and development building at Tokyo Factory**

1920-1980

1924
■ **Began manufacturing electrical machinery**

1925
■ **Began transformer production**

1927
■ **Began electric fan production**

1930
■ **Launched mercury-vapor rectifier production**



1933
■ **Began expansion circuit breaker production**

1936
■ **Built first hydraulic turbine, 4,850HP Francis Turbine**



1937
■ **Began watt-hour meter production**

1954
■ **Began ultra-compact magnetic switch production**



■ **Began volume production of selenium rectifiers**
In response to exploding demand for televisions and radios, Fuji Electric began volume production of selenium rectifiers, electronic components that convert alternating current (AC) to direct current (DC). The Company soon took an 80%-90% share of the domestic selenium rectifier market.



1955
■ **Began manufacturing juicers**
Sales of juicers took off from around 1961, playing a role in a nationwide health movement (campaign).



■ **Full-scale foray into thermal power plant business**
Signed a contract with Siemens AG for technology transfer of the steam turbine manufacturing. Subsequently delivered the first super-critical, variable pressure turbine in Japan, which was one of the largest in the country at the time. This move to import European technology marked a change of tack in a domestic power generation market dominated by U.S. technology.

1959
■ **Began manufacturing silicon diodes**

1965
■ **Electric propulsion system fitted to Antarctic exploration ship Fuji**



1969
■ **Began production of vending machines**
Used know-how as a vendor of refrigerated milk showcases to move into vending machines. Delivered 230 beverage vending machines to the 1970 Osaka World Exposition, prompting the wider spread of domestically made vending machines.



1971
■ **Developed centralized monitoring and control systems for power utility companies**
First computerized control system in Japan, using the FACOM-R mini-computer

■ **Began hybrid IC manufacture**

1973
■ **Began production of selenium photoconductive drums**

1976
■ **Began manufacturing general-purpose inverters**
First in the industry to develop general-purpose inverters.



■ **Developed transistor inverter FRENIC5000G**

1978
■ **Began research into amorphous solar cells**

1981
■ **Developed and commenced manufacture of electric propulsion system for ice-breaking ship Shirase**

1985
■ **First generation mini UPS "M-UPS Series" launched**

■ **Released the programmable logic controller "MICREX-F Series"**
■ **Developed 1,000kW phosphoric acid fuel cell**

1987
■ **Developed IGBT module**

1991
■ **Developed 2.5-inch magnetic disks**
1992
■ **Began development of solar cells formed on film substrates**
■ **Completed an ozone-based water treatment system**

1993
■ **Delivered the first generator (600MW output) of Noshiro Power Station**
■ **Completed a ski lift gate system**

1996
■ **Won order for IGBT main conversion devices used in electric railways (world's first large-capacity flat IGBT)**



1998
■ **Delivered 100kW phosphoric acid fuel cell**

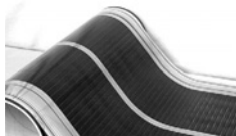
1999
■ **New mini-UPS "J-Series" launched**



1990

2000

2006
■ **Commenced mass production of film substrate amorphous solar cells**
Began mass-producing flexible amorphous solar cells based on plastic film substrates.



2007
■ **Began mass production of perpendicular magnetic recording media**
Full-scale mass production of world's largest capacity 2.5-inch glass substrate media (160GB/disk), 3.5-inch aluminium substrate media (334GB/disk).



2009
■ **Released high-voltage drop/dip compensator using a lithium-ion capacitor.**
The world's first embedded lithium-ion capacitor realized environmental impact reduction with a significantly smaller package.

2010

2010
■ **Developed a new three-level converter circuit and a new three-level power module, realizing highly efficient electric power conversion**
■ **140MW geothermal power plant, the largest single-unit capacity in the world, started operation**



■ **Development of next-generation SiC module power semiconductor**

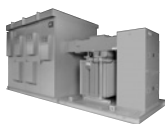


2011
■ **Launched sales of medium-voltage inverter with water-cooling system "FRENIC4800VM5"**

2012
■ **Launched dedicated inverters for air-conditioning and water treatment systems, FRENIC-HVAC and FRENIC-AQUA**
■ **Development of inverter equipped with next-generation power semiconductor SiC-SBD, a first in Japan**



■ **Launched power conditioning sub-system for mega solar power generation systems**



2014
■ **Launched power electronics equipped with SiC power semiconductors**



FRENIC-VG



Power conditioning sub-system for high-capacity mega solar use

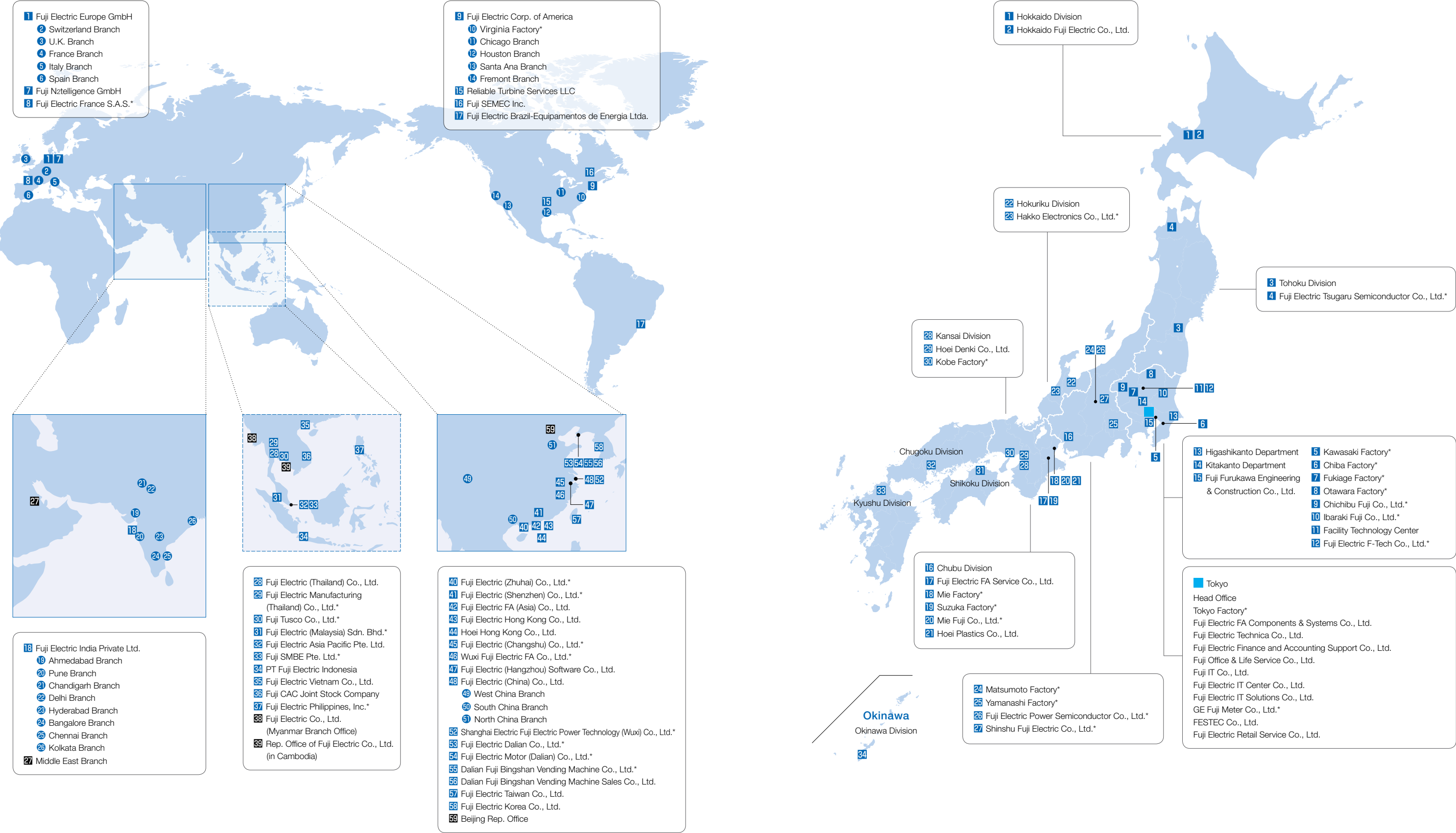
2015
■ **Launched aerosol analyzers**
Began contributing to elucidation of nature of PM2.5



■ **Launched steam-generation heat pumps**
Started making contributions to energy savings through recycling of low-temperature factory exhaust heat



Technology and Product History



Major Domestic Subsidiaries

Fuji Electric FA Components & Systems Co., Ltd.
Development, manufacture, and sales of electrical distribution & control equipment
Mitsui Sumitomo Bank Ningyo-cho Bldg., 5-7, Nihonbashi Odemma-cho, Chuo-ku, Tokyo 103-0011, Japan
Tel. +81-3-5847-8000

Fuji Furukawa Engineering & Construction Co., Ltd.
Plant construction, air conditioning and electricity, construction and auxiliary construction, and planning and performance of telecommunication construction
Solid Square West Tower, 580 Horikawa-cho, Saiwai-ku, Kawasaki-shi, Kanagawa 212-0013, Japan
Tel. +81-44-548-4500

Fuji Electric IT Solutions Co., Ltd.
Sales of computers and communication equipment, development of information processing systems, and provision of related total solutions
Ichigo Akihabara North Building, 15-12, Sotokanda 6-chome, Chiyoda-ku, Tokyo 101-0021, Japan
Tel. +81-3-5817-5701

Hoei Denki Co., Ltd.
Sales, installation, and repair of electrical machinery, control systems, and electronic components
6-60, Niitaka 2-chome, Yodogawa-ku, Osaka-shi, Osaka 532-0033, Japan
Tel. +81-6-6394-1111

Hokkaido Fuji Electric Co., Ltd.
Sales, installation, and repair of electrical machinery, control systems, and electronic components
1-118, Odori Higashi 7-chome, Chuo-ku, Sapporo-shi, Hokkaido 060-0041, Japan
Tel. +81-11-221-5511

GE Fuji Meter Co., Ltd.
Design, manufacture, sales, maintenance, and repair of electric meters (including smart meters and meter-related products) used by domestic electric power utilities and other customers
Gate City Ohsaki, East Tower, 11-2, Osaki 1-chome, Shinagawa-ku, Tokyo 141-0032, Japan
Tel. +81-3-5435-6340

Fuji IT Co., Ltd.
Total solutions for information systems, data control, and electronic information equipment
TIS Bldg., 4-3, Akebono-cho 2-chome, Tachikawa-shi, Tokyo 190-0012, Japan
Tel. +81-42-540-5170

Ibaraki Fuji Co., Ltd.
Manufacture and sales of power distributors and control equipment
471, Shimokido, Shimotsuma-shi, Ibaraki 304-0028, Japan
Tel. +81-296-43-3131

Hakko Electronics Co., Ltd.
Development, manufacture, and sales of electronic operation boards
238 Kamikashiwano-machi, Hakusan-shi, Ishikawa 924-0035, Japan
Tel. +81-76-274-6911

Fuji Electric FA Service Co., Ltd.
After-sales service and maintenance/inspection, repair, remodeling, and sales of drives in general, including inverters and motors
5520 Minami Tamagaki-cho, Suzuka-shi, Mie 513-8633, Japan
Tel. +81-59-383-1859

Fuji Electric Power Semiconductor Co., Ltd.
Manufacture of semiconductor devices
18-1, Tsukama 4-chome, Matsumoto-shi, Nagano 390-0821, Japan
Tel. +81-263-27-7425

Fuji Electric Tsgaru Semiconductor Co., Ltd.
Manufacture and sales of semiconductor devices
156 Nabekake, Urushikawa, Goshogawara-shi, Aomori 037-0017, Japan
Tel. +81-173-35-5671

Shinshu Fuji Electric Co., Ltd.
Development, design, manufacture, and repair of currency handling equipment
2535, Mitakedo, Ueda-shi, Nagano 386-0412, Japan
Tel. +81-268-42-7111

Hoei Plastics Co., Ltd.
Processing of plastics and sheet molding
1-27, Fuji-cho, Yokkaichi-shi, Mie 510-0013, Japan
Tel. +81-59-330-1572

Mie Fuji Co., Ltd.
Manufacture of vending machines
1-27, Fuji-cho, Yokkaichi-shi, Mie 510-0013, Japan
Tel. +81-59-330-1616

Fuji Electric Retail Service Co., Ltd.
Installation, maintenance, remodeling, and repair services for vending machines, etc.
FORECAST Sakurabashi Building, 5-4, Hatchobori 4-chome, Chuo-ku, Tokyo 104-0032, Japan
Tel. +81-3-6280-1132

Fuji Electric F-Tech Co., Ltd.
Design, manufacture, and sales of automatic equipment, labor-saving equipment, dies and jigs, and semiconductor application devices; design, manufacture, and repair of medical equipment and electric appliances
160-1 Maesuna, Kohnosu-shi, Saitama 369-0198, Japan
Tel. +81-48-548-5571

Fuji Electric Finance and Accounting Support Co., Ltd.
Handling of accounts receivable and accounts payable functions for finance departments of Fuji Electric and its Group companies; loan provision and other financial services for Fuji Electric Group companies
Gate City Ohsaki, East Tower, 11-2, Osaki 1-chome, Shinagawa-ku, Tokyo 141-0032, Japan
Tel. +81-3-5435-7330

Fuji Electric Information Technology Center Co., Ltd.
Consulting and training related to the development of computer and network-related software, computer and network processing, information services, etc.
Gate City Ohsaki, East Tower, 11-2, Osaki 1-chome, Shinagawa-ku, Tokyo 141-0032, Japan
Tel. +81-3-5435-7300

Fuji Office and Life Service Co., Ltd.
Printing, copying, document management, advertising, design, travel, insurance, real estate, salary computation outsourcing, and manpower dispatching
Gate City Ohsaki, East Tower, 11-2, Osaki 1-chome, Shinagawa-ku, Tokyo 141-0032, Japan
Tel. +81-3-5435-7311

FESTEC Co., Ltd.
Servicing, maintenance, and inspection of electrical equipment; maintenance work and construction work contracting
1 Fujimachi, Hino-shi, Tokyo 191-8502, Japan
Tel. +81-42-585-6469

Fuji Electric Technica Co., Ltd.
Sales of power distributors, control equipment, drive systems, and motor products
Mitsui Sumitomo Bank Ningyo-cho Bldg., 5-7, Nihonbashi Odemma-cho, Chuo-ku, Tokyo 103-0011, Japan
Tel. +81-3-5847-8070

Chichibu Fuji Co., Ltd.
Manufacture and sales of control equipment
755-1, Ogano, Ogano-machi, Chichibu-gun, Saitama 368-0193, Japan
Tel. +81-494-75-1111

Major Overseas Subsidiaries * Non-consolidated subsidiaries

Fuji Electric Asia Pacific Pte. Ltd.
Sales of electrical distribution and control equipment, drive control equipment, and semiconductor devices
151 Lorong chuan, #02-01A, New Tech Park, Singapore 556741
Tel. +65-6533-0014

Fuji SMBE Pte. Ltd.
Manufacture, sales, and services relating to low-voltage power distribution boards (switchgear, control equipment)
15 Senoko Avenue, Singapore 758305
Tel. +65-6756-0988

Fuji Electric (Thailand) Co., Ltd.
Sales and engineering of power distribution equipment, control panels, and other electric equipment
43 Thai CC Tower, 11F, Room No.114-9, South Sathorn Rd., Yannawa, Sathorn, Bangkok, 10120, Thailand
Tel. +66-2210-0615

Fuji Electric Manufacturing (Thailand) Co., Ltd.
Manufacture and sales of general purpose low-voltage industrial-use inverters, uninterruptible power systems, power conditioning sub-systems, vending machines, and substation equipment (switchgear)
118/2 Moo 18 Klong Nueng, Klong Luang, Pathumthani 12120, Thailand
Tel. +66-2529-2178

Fuji Tusco Co., Ltd.
Manufacture, sales, and provision of maintenance services for transformers
612-612/1, 1888 Moo4 Bangpoo Industrial Estate, Soi 8, 9A Pattana 1 Rd., A. Muang Samutprakarn 10280, Thailand
Tel. +66-2324-0100

PT Fuji Electric Indonesia
Sales of inverters, servos, UPS, tools, and other component products
Gedung Sucaco 2nd Floor, Jalan Kebon Sirih Raya No.71, PO Box 4872, Kebon Sirih, Jakarta Pusat 10340, Indonesia
Tel. +62-21-3984-3211

Fuji Electric India Private Ltd.
Sales of drive control equipment and semiconductor devices
409-410, Meadows, Sahar Plaza, Andheri Kurla Rd., J.B. Nagar, Andheri (East), Mumbai, 400 059, India
Tel. +91-22-4010-4870

Fuji Electric Philippines, Inc.
Manufacture of semiconductor devices
107 Enterprise Drive, Special Export Processing Zone II, Carmelray, Industrial Park, Canlubang, Calamba, Laguna, Philippines
Tel. +63-2-844-6183

Fuji Electric Vietnam Co., Ltd.*
Sales of electrical distribution and control equipment, drive control equipment
Room 401, 4th Floor, Corner Stone Building, 16 Phan Chu Trinh, Hoan Kiem, Ha Noi, Vietnam
Tel. +84-4-3935-1593

Fuji Electric (Malaysia) Sdn. Bhd.
Development, manufacture, and sales of magnetic disks and aluminum substrate for magnetic disks; manufacture of semiconductor devices
Lot No.4 and 5, Industrial Zone Phase 1, Kulim Hi-Tech Industrial Park, 09000 Kulim, Kedah Darul Aman, Malaysia
Tel. +60-4-403-1111

Fuji Electric (China) Co., Ltd.
Sales of locally manufactured or imported products in China, and export of locally manufactured products
F27, International Corporate City, No.3000 Zhongshan North Rd., Shanghai 200063, The People's Republic of China
Tel. +86-21-5496-1177

Shanghai Electric Fuji Electric Power Technology (Wuxi) Co., Ltd.
Research and development for, design and manufacture of, and provision of consulting and services for electric drive products, equipment for industrial automation control systems, control facilities for wind power generation and photovoltaic power generation, uninterruptible power systems, and power electronics products
Lot No.28 2#Area 1, Xi Mei Road, New District, Wuxi, Jiangsu, The People's Republic of China
Tel. +86-510-8815-9229

Wuxi Fuji Electric FA Co., Ltd.
Manufacture and sales of low/high-voltage inverters, temperature controllers, gas analyzers, and uninterruptible power systems
Lot No.28, Xi Mei Rd., New District, Wuxi, Jiangsu 214028, The People's Republic of China
Tel. +86-510-8815-2088

Fuji Electric (Changshu) Co., Ltd.
Manufacture and sales of electromagnetic contactors and thermal relays
No.18 Dongshan Rd., Changshu, Jiangsu 215500, The People's Republic of China
Tel. +86-512-5284-5642

Fuji Electric (Zhuhai) Co., Ltd.
Manufacture and sales of industrial electric heating devices
No.22 Hanqing Rd., Pingsha, Jinwan, Zhuhai, Guangdong 519055, The People's Republic of China
Tel. +86-756-7267-861

Fuji Electric (Shenzhen) Co., Ltd.
Manufacture and sales of photoconductors, semiconductor devices, and components for currency handling systems
High-technology Industrial Zone, Feng Tang Rd., Fu Yong, Bao An, Shenzhen, Guangdong 518103, The People's Republic of China
Tel. +86-755-2734-2910

Fuji Electric Dalian Co., Ltd.
Manufacture of low-voltage circuit breakers
No.3, The Third Street of Northeast, Dalian Economic & Technical Development Zone, Dalian 116600, The People's Republic of China
Tel. +86-411-8762-2000

Fuji Electric Motor (Dalian) Co., Ltd.
Manufacture of industrial motors
3-2, No.3 Dongbei Street, Dalian Economic & Technical Development Zone, Dalian 116600, The People's Republic of China
Tel. +86-411-8763-6555

Equity-Method Affiliates

METAWATER Co., Ltd.
Manufacture and sales of various equipment and electric equipment for facilities in the water/environment fields; design, construction, and unit contract of various plants
JR Kanda Manseibashi Bldg. 1-25, Kanda-sudacho, Chiyoda-ku, Tokyo 101-0041, Japan
Tel. +81-3-6853-7300

METAWATER SERVICE Co., Ltd.
Operation and maintenance work of water supply, sewage, and waste processing facilities
JR Kanda Manseibashi Bldg. 1-25, Kanda-sudacho, Chiyoda-ku, Tokyo 101-0041, Japan
Tel. +81-3-6853-7265

Dalian Fuji Bingshan Vending Machine Co., Ltd.
Development, manufacture, sales, servicing, overhauling, and installation of vending machines, and related consulting
No.61 Huaihe West Rd., Dalian Economic & Technical Development Zone, Dalian 116600, The People's Republic of China
Tel. +86-411-8754-5798

Dalian Fuji Bingshan Vending Machine Sales Co., Ltd.
Sales, repair, consulting, and installation work for vending machines
No.61 Huaihe West Rd., Dalian Economic & Technical Development Zone, Dalian 116600, The People's Republic of China
Tel. +86-411-8730-5911

Fuji Electric (Hangzhou) Software Co., Ltd.
Development of vending machine-related control software and development of management software
508-512 Technology Square, Hangzhou East Software Park, No.90 Wensan Rd., Hangzhou, Zhejiang 310012, The People's Republic of China
Tel. +86-571-8821-1661

Fuji Electric FA (Asia) Co., Ltd.
Sales of electrical distribution and control equipment
Room 2015, 20/F., The Metropolis Tower, 10 Metropolis Drive, Hunghom, Kowloon, Hong Kong
Tel. +852-2311-8282

Fuji Electric Hong Kong Co., Ltd.
Sales of semiconductor devices and imaging device products
Suites 1911-13, 19th Floor, Tower 6, The Gateway, Harbour City, Tsim Sha Tsui, Kowloon, Hong Kong
Tel. +852-2664-8699

Hoei Hong Kong Co., Ltd.
Sales of electrical/electronic components
Unit 310-311, 3/F Mirror Tower, 61 Mody Rd., Tsim Sha Tsui East, Kowloon, Hong Kong
Tel. +852-2369-8186

Fuji Electric Taiwan Co., Ltd.
Sales of semiconductor devices, electrical distribution and control equipment, and drive control equipment
10F, No.168, Song Jiang Rd., Taipei, Taiwan, R.O.C. PO#10459
Tel. +886-2-2511-1820

Fuji Electric Korea Co., Ltd.
Sales of power distribution and control equipment, and drive control equipment
16F Shinsong Bldg., 25-4 Youido-dong, Youngdungpo-gu, Seoul 150-010, Korea
Tel. +82-2-780-5011

Fuji Electric Corp. of America
Sales of electrical machinery and equipment, semiconductor devices, drive control equipment, and devices
50 Northfield Avenue, Edison, NJ 08837, U.S.A.
Tel. +1-732-560-9410

Fuji Electric Europe GmbH
Sales of electrical/electronic machinery and components
Goethering 58, 63067 Offenbach Main, Germany
Tel. +49-69-6690290

Fuji Electric France S.A.S.
Manufacture and sales of measurement and control devices
46, rue Georges Besse, ZI du Brezet, 63039 Clermont-Ferrand, Cedex 2, France
Tel. +33-4-73-98-26-98

Reliable Turbine Services LLC
Repair and maintenance of steam turbines, generators, and peripheral equipment
858 Acid Mine Road, Sullivan, MO 63080, U.S.A.
Tel. +1-573-468-4045

Domestic Bases

Sales and Service Offices

Head Office Region

Head Office	Tel: +81-3-5435-7111
Kanda Office	Tel: +81-3-5816-7901
Hatchobori Office	Tel: +81-3-6280-1114

Hokkaido Region

Hokkaido Division	Tel: +81-11-261-7231
Donan Branch	Tel: +81-143-44-6800
Tomakomai Service Center	Tel: +81-144-57-3330
Obihiro Service Center	Tel: +81-155-27-1621
Kushiro Service Center	Tel: +81-154-32-4888

Tohoku Region

Tohoku Division	Tel: +81-22-225-5351
Iwate Branch	Tel: +81-198-26-5161
Aomori Service Center	Tel: +81-17-885-8770
Akita Service Center	Tel: +81-18-824-3401
Koriyama Service Center	Tel: +81-24-932-0879

Kanto Region

Higashikanto Department	Tel: +81-43-266-7622
Kitakanto Department	Tel: +81-48-834-3111
Gunma Branch	Tel: +81-27-367-1370
Matsumoto Branch	Tel: +81-263-48-2763
Matsumoto Service Center	Tel: +81-263-48-3586
Kashima Service Center	Tel: +81-299-91-0335
Hitachinaka Service Center	Tel: +81-29-275-2951
Tama Service Center	Tel: +81-42-585-6243
Shin Yokohama Service Center	Tel: +81-45-476-7841

Hokuriku Region

Hokuriku Division	Tel: +81-76-441-1231
Kanazawa Department	Tel: +81-76-291-8830
Niigata Branch	Tel: +81-25-284-5325
Fukui Service Center	Tel: +81-776-21-7170

Chubu Region

Chubu Division	Tel: +81-52-746-1000
Toyoda Department	Tel: +81-566-83-9915
Shizuoka Branch	Tel: +81-54-255-7623
Shizuoka Service Center	Tel: +81-54-255-7625
Mishima Branch	Tel: +81-55-976-3331
Hamamatsu Branch	Tel: +81-53-413-6161
Hamamatsu Service Center	Tel: +81-53-413-6166
Mie Branch	Tel: +81-59-353-3471
Mie Service Center	Tel: +81-59-353-3471

Kansai Region

Kansai Division	Tel: +81-6-7166-7300
Kobe Department	Tel: +81-78-371-3288
Shiga Branch	Tel: +81-748-31-1360
Sennan Service Center	Tel: +81-72-458-9601
Tsuruga Service Center	Tel: +81-770-22-0262

Chugoku Region

Chugoku Division	Tel: +81-82-247-4231
Shunan Service Center	Tel: +81-834-32-1780
Yamaguchi Branch	Tel: +81-836-21-3177
Yamaguchi Service Center	Tel: +81-836-21-3178
Fukuyama Service Center	Tel: +81-84-957-0747
Higashichugoku Branch	Tel: +81-86-422-0922

Shikoku Region

Shikoku Division	Tel: +81-87-851-9101
Matsuyama Branch	Tel: +81-89-933-9100
Matsuyama Service Center	Tel: +81-89-933-9100
Kochi Branch	Tel: +81-88-824-8122
Kochi Service Center	Tel: +81-88-824-8122
Tokushima Branch	Tel: +81-88-657-4110
Tokushima Service Center	Tel: +81-88-657-4110

Kyushu / Okinawa Region

Kyushu Division	Tel: +81-92-262-7800
Kokura Branch	Tel: +81-93-562-2323
Kokura Service Center	Tel: +81-93-562-2323
Ooita Branch	Tel: +81-97-532-9161
Nagasaki Branch	Tel: +81-95-822-6165
Kumamoto Branch	Tel: +81-96-334-7781
Miyazaki Branch	Tel: +81-985-24-7281
Kagoshima Branch	Tel: +81-99-286-1234
Kagoshima Service Center	Tel: +81-99-213-8735
Okinawa Division	Tel: +81-98-862-8625

Company Data

Corporate Outline

Company Name:	Capital Stock:
FUJI ELECTRIC CO., LTD.	¥47.6 billion (Year ended March 31, 2016)

Established:	Number of Employees (Consolidated)
August 29, 1923	26,508 (As of March 31, 2016)

Registered Address:	Net Sales (Consolidated)
1-1, Tanabeshinden, Kawasaki-ku, Kawasaki-shi, Kanagawa 210-9530, Japan	¥813.6 billion (Year ended March 31, 2016)

Head Office:
Gate City Ohsaki, East Tower, 11-2 Osaki 1-chome, Shinagawa-ku, Tokyo 141-0032, Japan

Management (As of July 1, 2016)

Directors		Executive Officers	
Michihiro Kitazawa	President and Chairman of the Board of Directors	Michihiro Kitazawa	President and Chairman of the Board of Directors General Management
Kenzo Sugai	Representative Director	Kenzo Sugai	Executive Vice President and Elected Corporate Director Assistant to the President, Corporate General Manager, Sales Group
Motoyuki Suzuki	Outside Director		
Toshihito Tamba	Outside Director		
Naoomi Tachikawa	Outside Director		
Michio Abe	Director	Michio Abe	Senior Managing Executive Officer Corporate General Manager, Production & Procurement Group
Junichi Matsumoto	Director	Kuniaki Yanagisawa	Senior Managing Executive Officer Corporate General Manager, Electronic Devices Business Group
Junichi Arai	Director	Hidehiko Asahi	Managing Executive Officer Corporate General Manager, Food & Beverage Distribution Business Group
Masatsugu Tomotaka	Director	Junichi Arai	Managing Executive Officer Corporate General Manager, Corporate Management Planning Headquarters, General Manager, Export Administration Office, In charge of compliance management and crisis management
		Masatsugu Tomotaka	Managing Executive Officer Corporate General Manager, Power Electronics Business Group
		Naoya Eguchi	Executive Officer Corporate General Manager, Corporate R&D Headquarters
		Takashi Kusaka	Executive Officer Corporate General Manager, Industrial Infrastructure Business Group
		Junichi Matsumoto	Executive Officer General Manager, Corporate Finance Office, Corporate Management Planning Headquarters
		Takeshi Kadoshima	Executive Officer General Manager, Human Resources and General Affairs Office
		Masahiro Fujiwara	Executive Officer Corporate General Manager, Power & Social Infrastructure Business Group
		Kenji Goto	Executive Officer Deputy Corporate General Manager, Sales Group
		Yasuhiro Takahashi	Executive Officer Deputy Corporate General Manager, Food & Beverage Distribution Business Group
		Susumu Shinmura	Executive Officer Deputy Corporate General Manager, Sales Group; General Manager, Kansai Branch
		Masahiro Morimoto	Executive Officer President and Representative Director, Fuji Electric FA Components & Systems Co., Ltd.

Main Domestic Manufacturing Sites

Kawasaki Factory

1-1, Tanabeshinden, Kawasaki-ku, Kawasaki-shi, Kanagawa 210-9530
Steam turbines, waterwheels, generators, electric motors, nuclear power plant equipment, electric dust collectors, etc.

Tokyo Factory

1 Fujimachi, Hino-shi, Tokyo 191-8502
Distributed controllers, data transmission equipment, guard/control monitoring equipment, radiation equipment and systems, IMM, MEMS, measurement instruments, sensor instruments

Chiba Factory

7 Yahatakaigandori, Ichihara-shi, Chiba 290-8511
Transformers, switching devices, rectifiers, fuel cells, etc.

Suzuka Factory

5520 Minamitamagaki-cho, Suzuka-shi, Mie 513-8633
Inverters, servo systems, motors, generators, etc.

Kobe Factory

4-1-1, Takatsukadai, Nishi-ku, Kobe-shi, Hyogo 651-2271
Power distributors, control equipment, control devices for railcars, medium-voltage inverters, uninterruptible power systems, etc.

Matsumoto Factory

4-18-1, Tsukama, Matsumoto-shi, Nagano 390-0821
Semiconductor devices

Yamanashi Factory

221-1, Iino, Minami-Alps-shi, Yamanashi 400-0222
Semiconductor devices

Mie Factory

1-27, Fuji-cho, Yokkaichi-shi, Mie 510-8631
Vending machines, stores and distribution systems

Fukiage Factory

1-5-45, Minami, Konosu-shi, Saitama 369-0192
Magnetic switches, command switches, high-voltage vacuum circuit breakers, electric power management devices, control relays, safety devices

Otawara Factory

1043 Nakadawara, Otawara-shi, Tochigi 324-8510
Earth-leakage circuit breakers, molded-case circuit breakers, timers, counters, gas-related equipment, limit switches

Facility Technology Center

1-160, Maesuna, Konosu-shi, Saitama 369-0198
Industrial technology development, equipment manufacture, technical and skills training



This mark symbolizes
the commitment of Fuji Electric
to environmental protection.



Gate City Ohsaki, East Tower, 11-2 Osaki 1-chome, Shinagawa-ku, Tokyo 141-0032, Japan
Tel: +81-3-5435-7111
<http://www.fujielectric.com>



This corporate profile is printed on paper certified by the Forest Stewardship Council® (FSC) with "100% vegetable oil ink" for "waterless printing".
00A2-E-0001j Printed in Japan 2016.7