

Direct connection to Siemens S7 MPI port

Monitouch HMI Technical Note TN-MH-0002a

Table of Contents

1. <i>Introduction</i>	2
2. <i>V-SFT PLC Setting</i>	2
3. <i>Wiring</i>	2
4. <i>Communication Parameter Setting</i>	3
5. <i>For More Information</i>	4

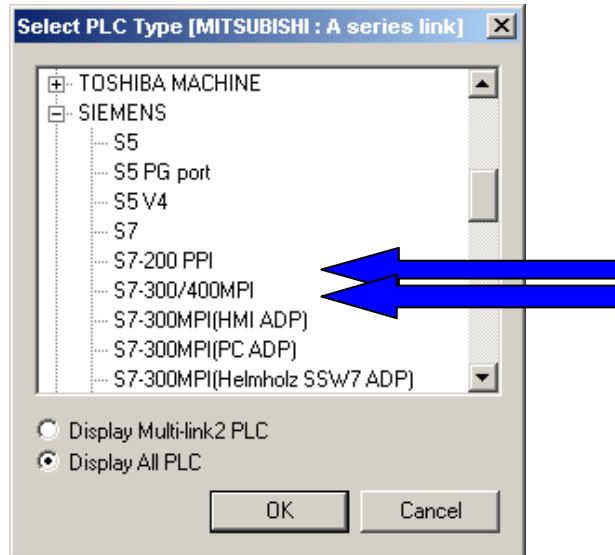
Monitouch HMI
Division of Fuji Electric Corp. of America

55 Westech Drive
Tyngsboro, MA 01879
Phone: (978) 649-8383
Toll Free: (866) 838-4031
Fax: (978) 649-0090
E-Mail: Support@MonitouchHMI.com
Website: www.MonitouchHMI.com

1. Introduction

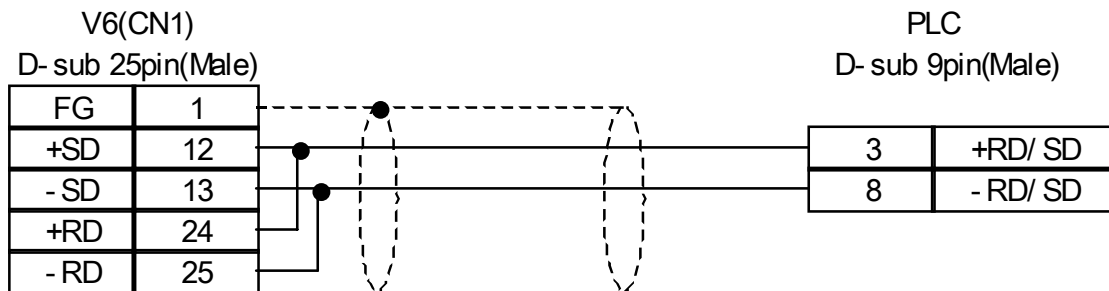
This document describes how to connect a Monitouch panel to a Siemens S7 PLC using the MPI port. This is done without using any converters. The wiring and settings are shown. Access to the PLC programming software may be necessary to verify/change settings.

2. V-SFT PLC Setting



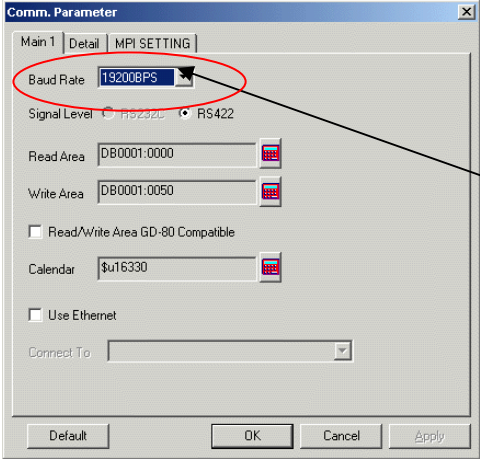
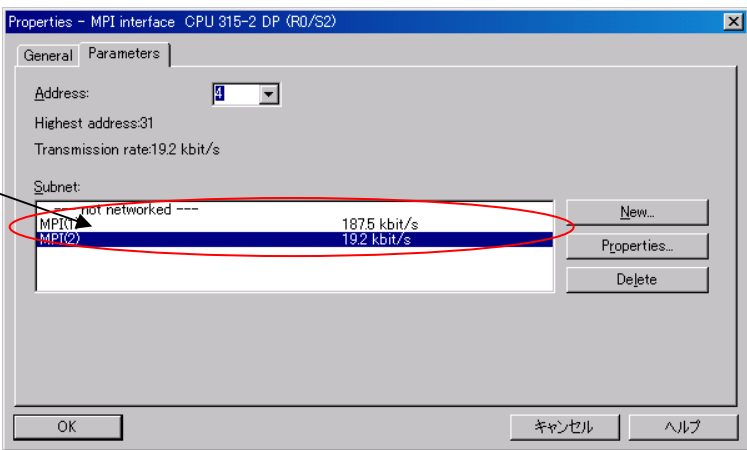
3. Wiring

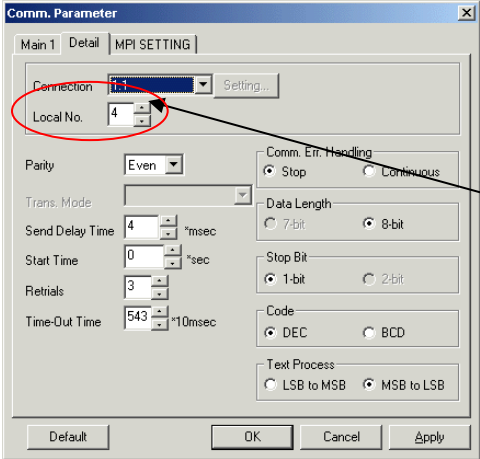
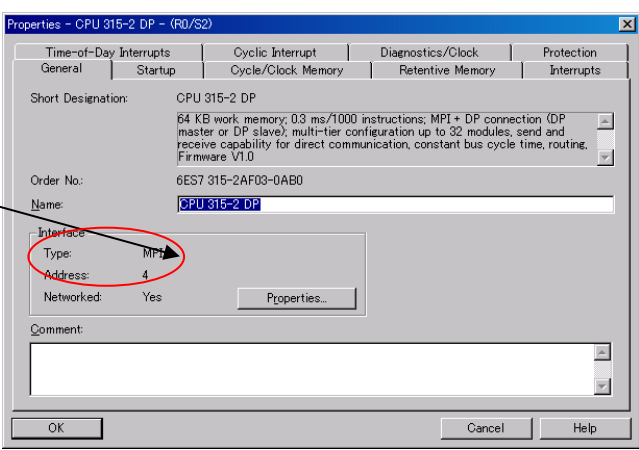
RS485



4. Communication Parameter Setting

Make sure that following settings are the same on the Monitouch panel and the Simatic Manager.

V-SFT	HW Config in Simatic Manager
	
<p>Baudrate should be 19200bps.</p>	<p>Baudrate of MPI port should be 19.2Kbps.</p>

V-SFT	HW Config in Simatic Manager
	
<p>Local No. must be the same as MPI address of the PLC.</p>	<p>Please check if MPI address is the same as Local No.</p>

5. For More Information

1. Manuals (Monitouch)
 - PLC Connection Manual, Chapter 24
2. Siemens
 - Website <http://sea.siemens.com>