

Import a Chinese translation into V-SFT

Monitouch HMI Technical Note TN-MH-0014a

Table of Contents

1. <i>Introduction</i>	2
2. <i>Requirements</i>	2
3. <i>Microsoft Windows Configuration for Multiple Input Method Editors (IMEs)</i>	2
4. <i>Export Language data from V-SFT</i>	4
5. <i>Edit Language Data</i>	5
6. <i>Import Language into Panel</i>	7
7. <i>For More Information</i>	8

Monitouch HMI
Division of Fuji Electric Corp. of America

55 Westech Drive

Tyngsboro, MA 01879

Phone: (978) 649-8383

Toll Free: (866) 838-4031

Fax: (978) 649-0090

E-Mail: Support@MonitouchHMI.com

Website: www.MonitouchHMI.com

1. Introduction

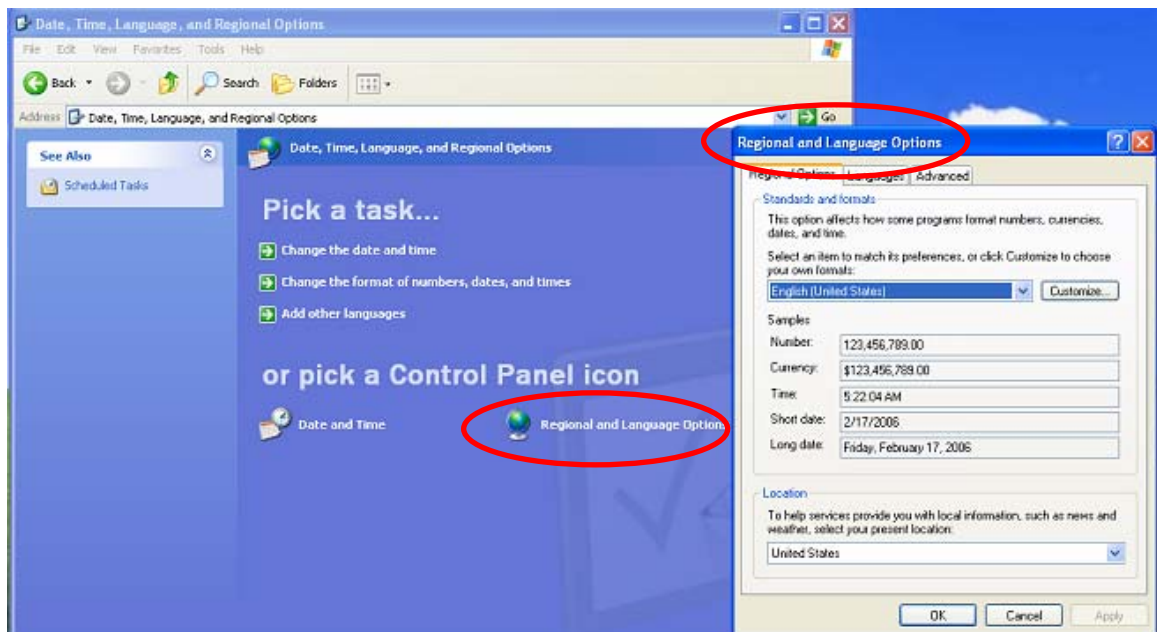
This document describes how to import Chinese translation into a V-SFT application. Because of the way Microsoft Office handles the fonts, the translations cannot be imported using the standard method (export to csv file, edit, import from csv files). By following this Technical Note, you will be able to work around the limitations of Microsoft Excel.

2. Requirements

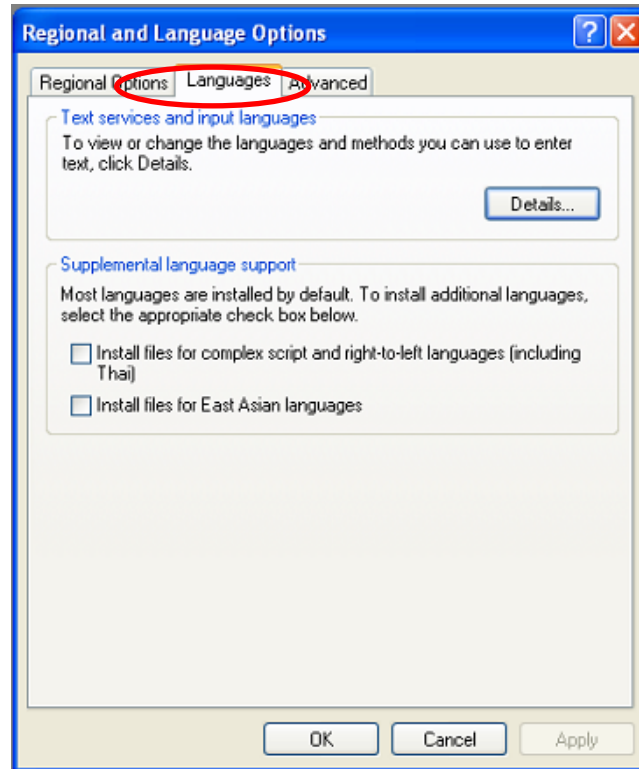
- 1) V-SFT programming software.
- 2) Microsoft Word, or another text editing program.

3. Microsoft Windows Configuration for Multiple Input Method Editors (IMEs)

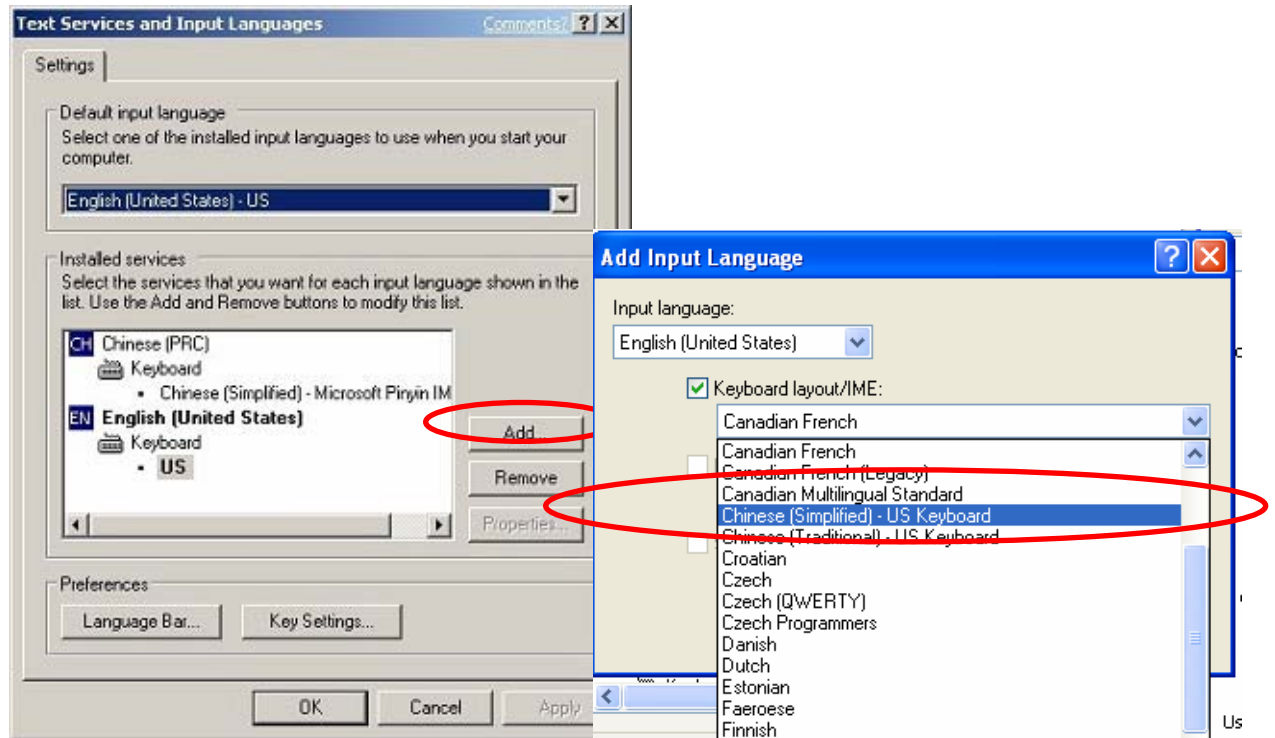
- 1) First, we need to make sure that the Chinese language can be displayed on your PC. Click [Start]>[Setting]>[Control Panel], then click on [Date, Time, Language and Regional Options].



2) Click on the [Languages] tab



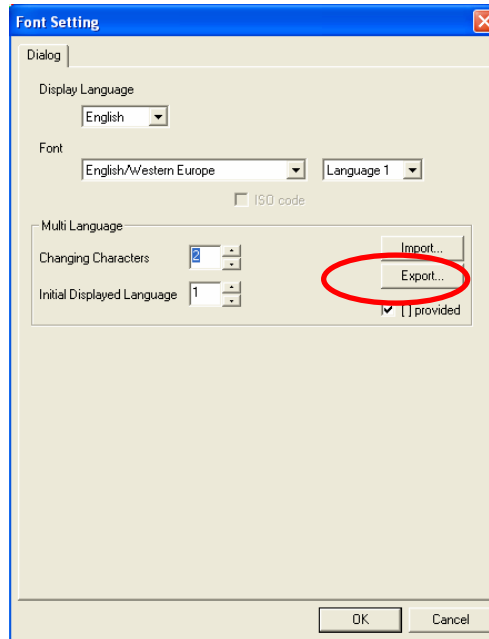
3) Click [Details] and then [Add] to add an input language



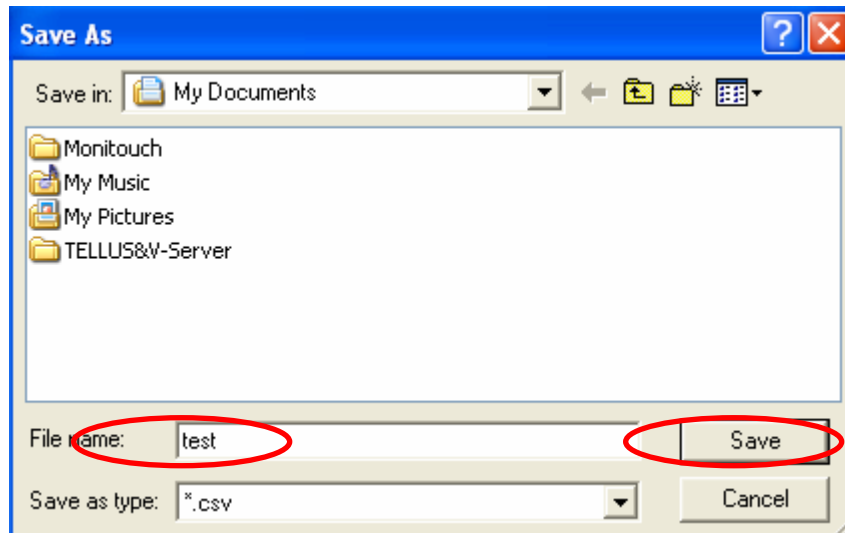
4. Export Language data from V-SFT

In this example we have an application with Language 1 = English and Language 2 = Chinese.

- 1) Make sure that the application is configured for Multi-Language by setting the "Changing Characters" setting greater than 1. To configure for Chinese in this example, click [Language 1] and change to Language 2 and then change [Font] to Chinese(simplified).
- 2) Export the language data by clicking [System Setting]>[Font Setting]>[Export]

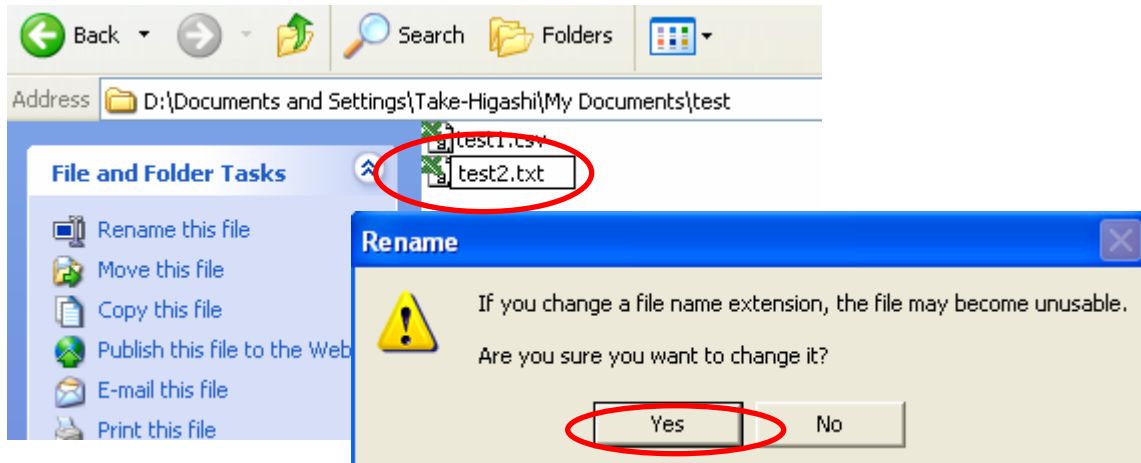


- 3) Select a location to store the language data

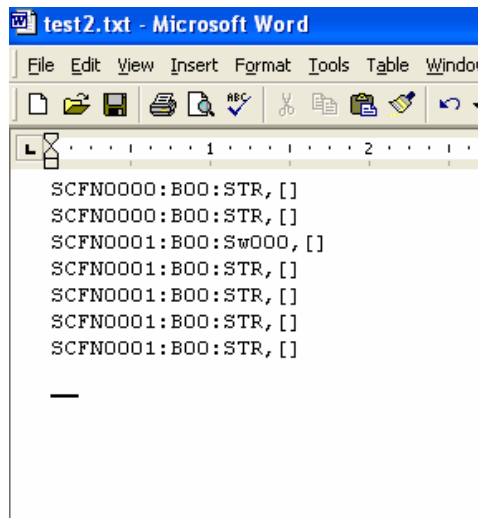


5. Edit Language Data

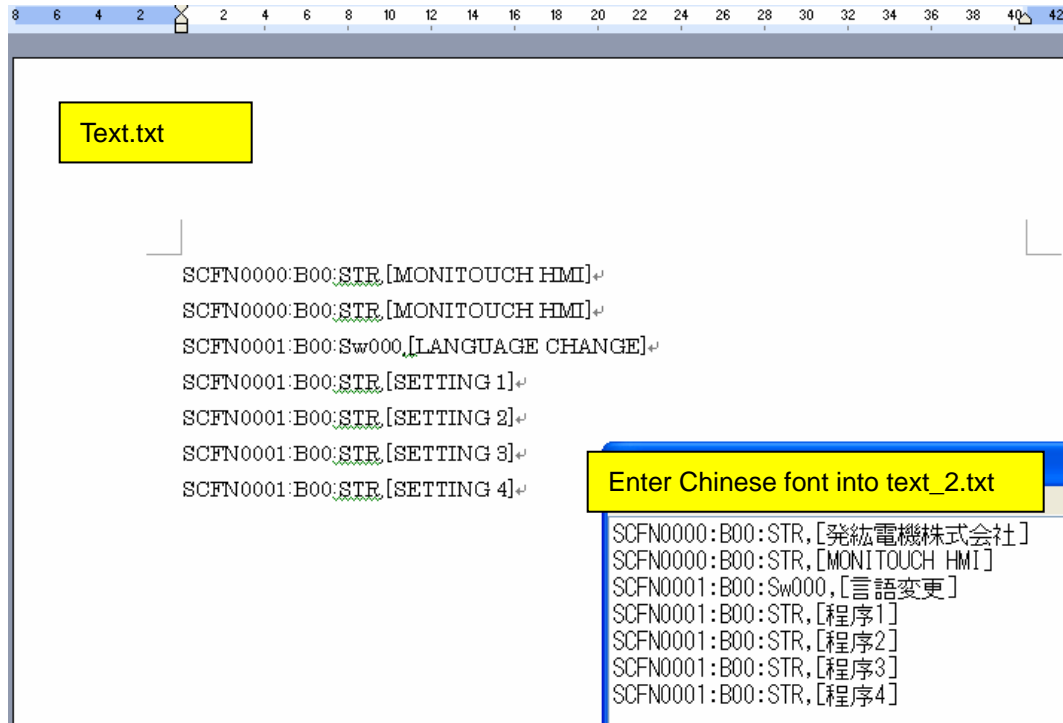
- 1) This will create a csv file for each language. We need to change the extension of the Chinese csv file to .txt. This can be done by renaming the file from Windows Explorer (Click the file, then [File] > [Rename]).



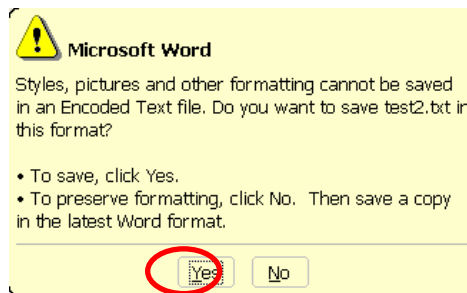
- 2) Open test2.txt with Microsoft Word. Take care not to modify anything to the left of the first comma. These are identifiers for V-SFT and modifying them will cause V-SFT to reject the import.



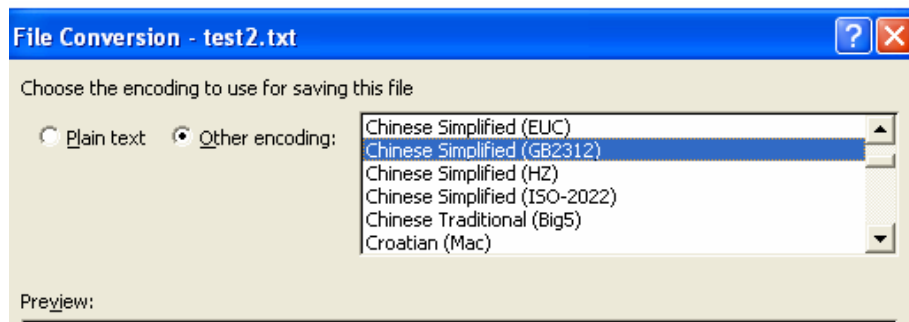
- 3) Change the IME (click on the language toolbar and select the Chinese input) to enter the Chinese characters. It is usually easier to open the language 1 file (Text.csv) to use as a reference when editing the data.



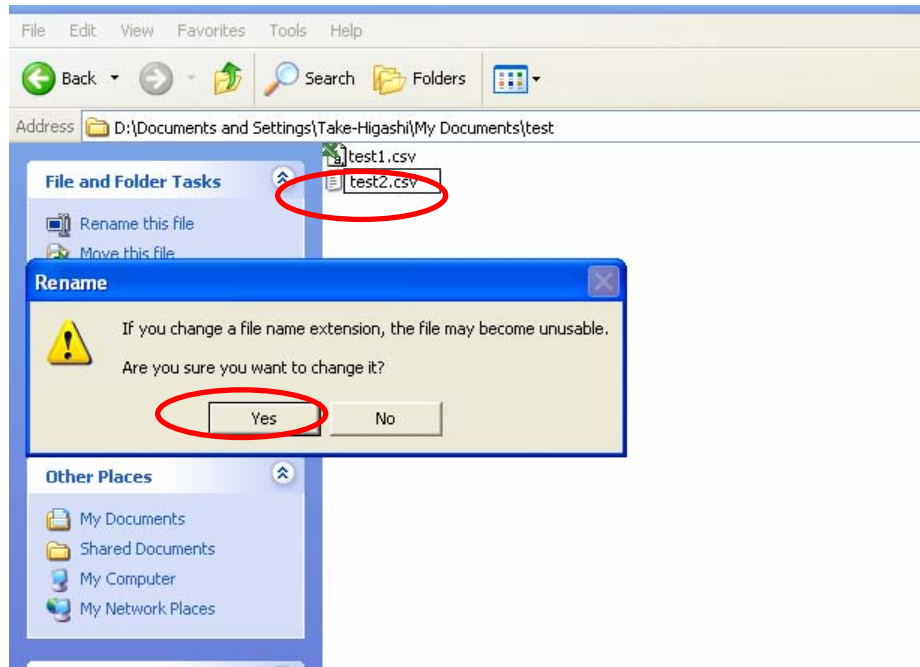
- 4) After editing, click [File] > [Save as]. Make sure that the "Save as type" is set to "Encoded Text (*.txt)". Click Yes on the following dialog box.



- 5) Then select "Other Encoding:" and select Chinese Simplified (GB2312):

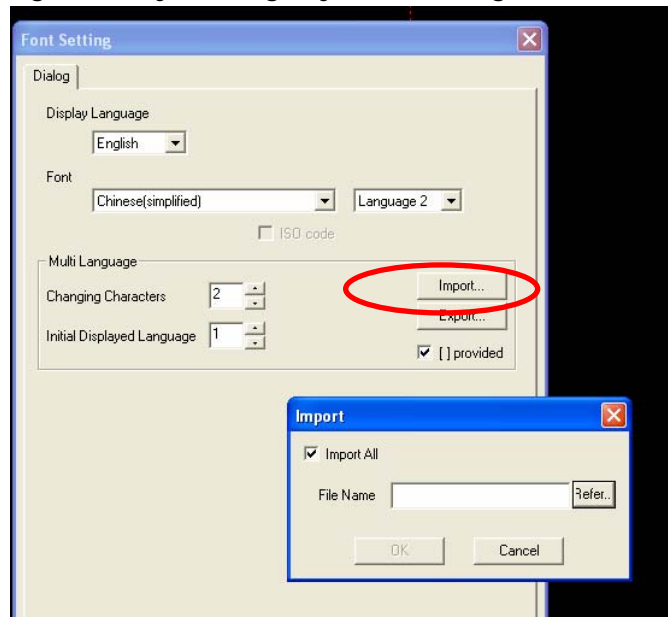


- 6) Now go back to Windows Explorer to rename the file back to a .csv extension.



6. Import Language into Panel

- 1) Import the language data by clicking [System Setting]>[Font Setting]>[Export]



- 2) If the [Import All] check box is checked, it will import all of the languages, otherwise only the selected language will be imported. Here you can check it and click [Refer] and select the Language 1 file to import (Text1.csv).

