

Connect to an Allen Bradley Net-ENI module

Monitouch HMI Technical Note TN-MH-0017a

Table of Contents

1. <i>Introduction</i>	2
2. <i>Requirements</i>	2
3. <i>Configure the Connections</i>	2
4. <i>Configure the NET-ENI module</i>	2
5. <i>Configure the PLC Port</i>	3
6. <i>Configure V-SFT</i>	4
7. <i>Configure the Wiring</i>	5
8. <i>For More Information</i>	5

Monitouch HMI
Division of Fuji Electric Corp. of America

55 Westech Drive
Tyngsboro, MA 01879
Phone: (978) 649-8383
Toll Free: (866) 838-4031
Fax: (978) 649-0090
E-Mail: Support@MonitouchHMI.com
Website: www.MonitouchHMI.com

1. Introduction

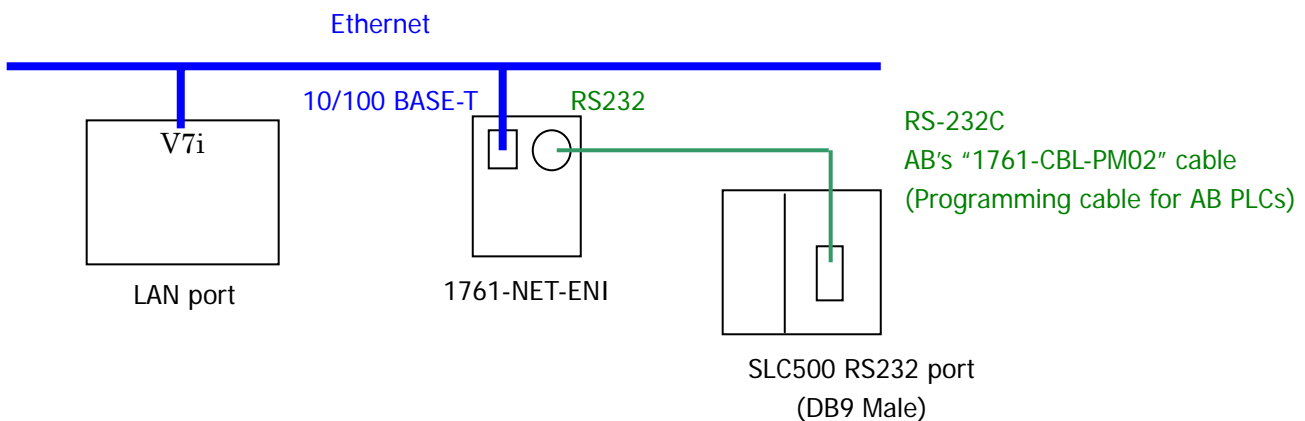
This document describes how to connect to an Allen Bradley network through a NET-ENI module. This was tested with a SLC 500 processor, but it should work with any Allen Bradley serial PLC and the NET-ENI module.

2. Requirements

- 1) V-SFT programming software.
- 2) NET-ENI module from Allen Bradley
- 3) Monitouch panel with Ethernet (V7i series, V706 series or V715). The CU-03 module does not support this communication.

3. Configure the Connections

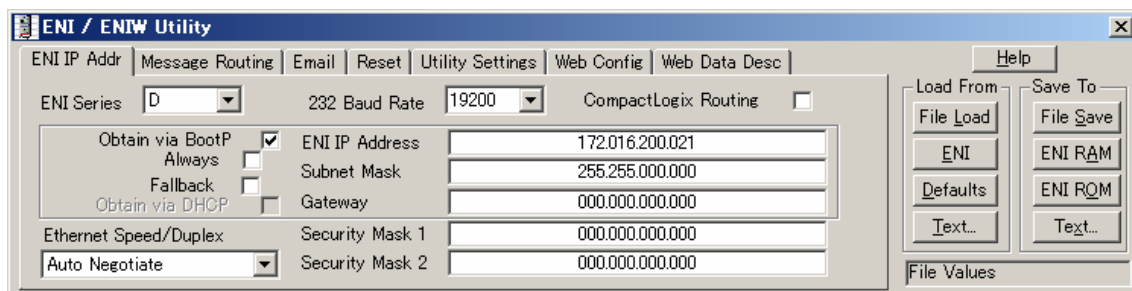
- 1) The connection should be configured as shown below.



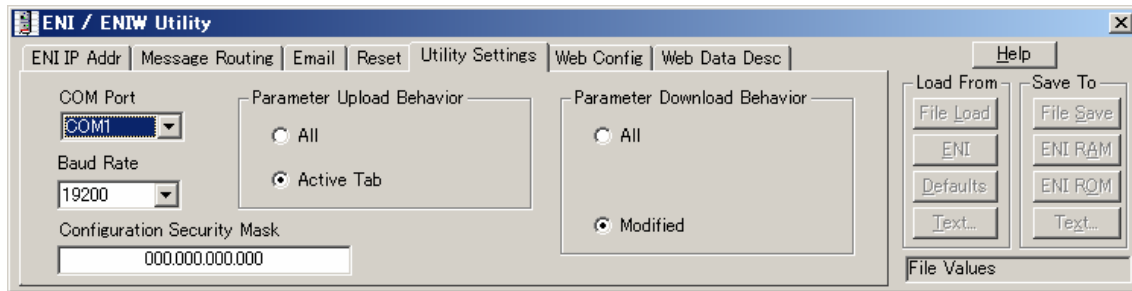
* **IMPORTANT!** This is for V7i only. V6 + CU-03 or V7 + CU-03 do not support this connection.

4. Configure the NET-ENI module

- 1) Open the NET-ENI Utility software.
- 2) Set the IP Address of the NET-ENI module.



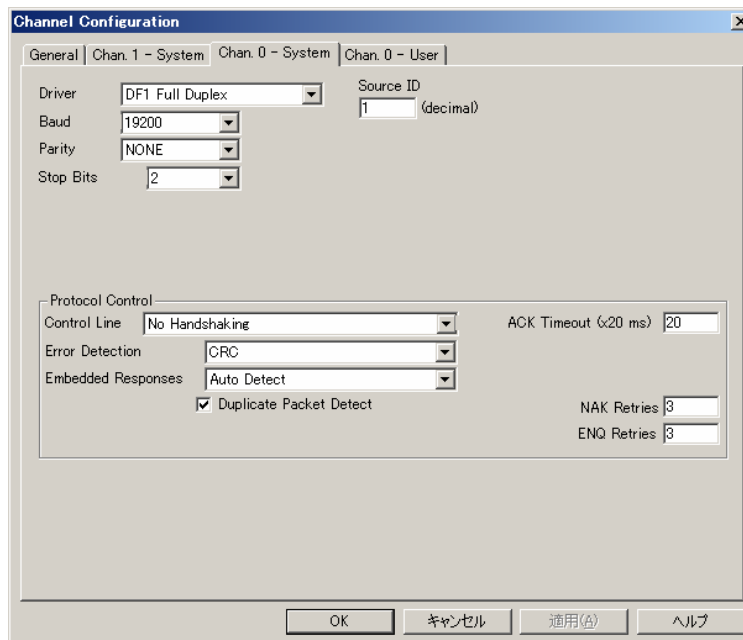
3) Set the Utility Settings (For transferring the setting to the NET-ENI).



5. Configure the PLC Port

**Using the SLC500 as an example*

1) In the RSLogix 500 software, set the Channel Configuration – Chan. 0-System.

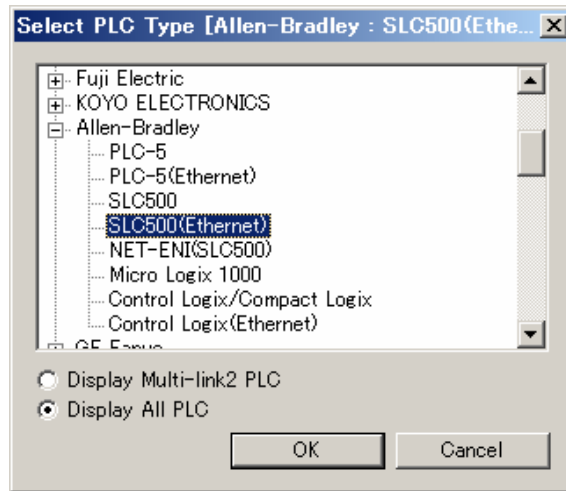


2) Confirm the:

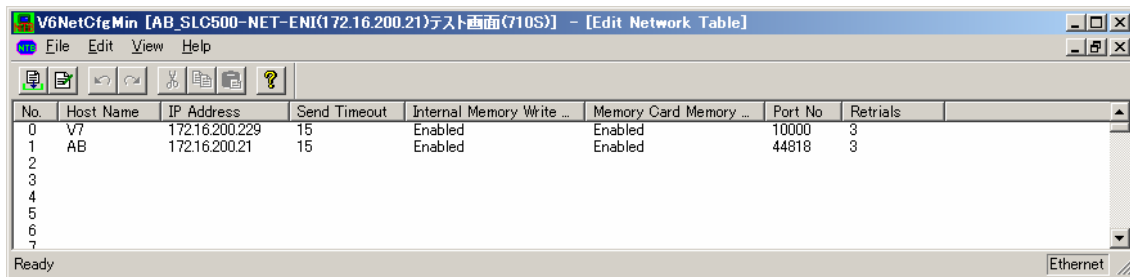
- Parity (none)
- Stop Bit (2)
- Error Detection (CRC)

6. Configure V-SFT

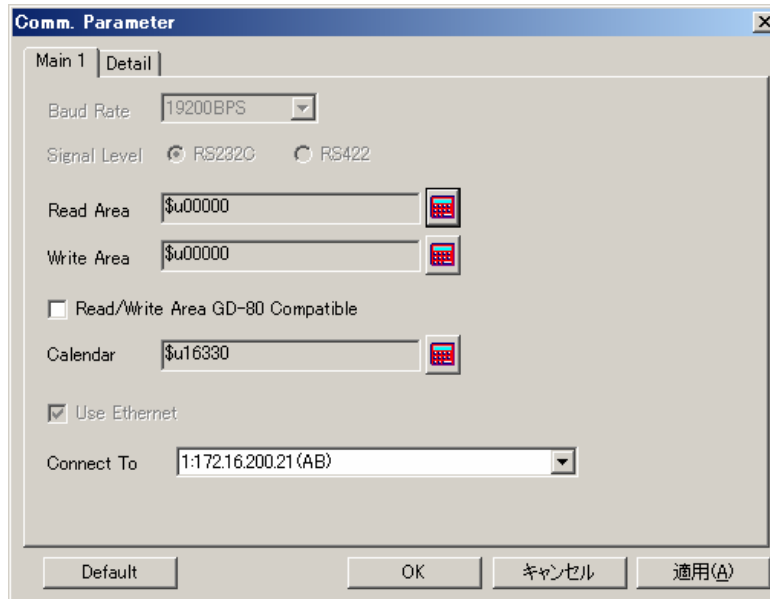
- 1) Set the PLC Type (System Setting – PLC Type) to SLC500(Ethernet) Driver



- 2) Add the Ethernet devices to the Network Table (System Setting – Network Table Setting). **Note the port number for the Allen Bradley devices is 44818!**



- 3) Configure the Comm Parameters (System Setting – Comm. Parameter). Make sure that the Connect To setting is the IP Address of the target device.



7. Configure the Wiring

- 1) Use the cable below:

Mini-DIN 8			SLC 500 (CH0)	
GND	2	-----	5	GND
Rx	4	-----	3	Rx
Tx	7	-----	2	Tx

*For this test, Allen Bradley cable 1761-CBL-PM02 was used.

8. For More Information

- 1) Allen Bradley Manual for the NET ENI:

http://literature.rockwellautomation.com/idc/groups/literature/documents/um/1761-um006_-en-p.pdf