

Programmable Operator interface

MONITOUCH

V9 - completing your automation needs



From April 2014, MONITOUCH V9 will bring you enhanced capacity and a more user-friendly interface

Compatible with mobile equipment, advanced use of information through networking, high-speed free-style drawing and improved operability thanks to new design architecture. We are confident that our new range will surpass your expectations.

V9 Advanced High resolution widescreen LCD with wireless LAN

<div>Widescreen</div> <div>V9071iWR</div> <div>To be released in Fall 2014</div>	<div>Widescreen</div> <div>V9101iWR</div> <div>To be released in Fall 2014</div>
Type: TFT	Type: TFT
Size: 7.0 inches	Size: 10.1 inches
Resolution: WVGA	Resolution: WSVGA
Touch switch: Capacitance type	Touch switch: Capacitance type
Wireless LAN: Provided	Wireless LAN: Provided
Wired LAN I/F: 1ch	Wired LAN I/F: 2ch
Serial I/F: 2ch	Serial I/F: 3ch
AUDIO OUT I/F: Not provided	AUDIO OUT I/F: Provided

V9 Standard High performance model

<div>V9080iS</div> <div>To be released in Spring 2014</div>	<div>V9100iS</div> <div>To be released in Spring 2014</div>	<div>V9120iS</div> <div>To be released in Fall 2014</div>	<div>V9150iX</div> <div>To be released in Fall 2014</div>
Type: TFT	Type: TFT	Type: TFT	Type: TFT
Size: 8.4 inches	Size: 10.4 inches	Size: 12.1 inches	Size: 15.0 inches
Resolution: SVGA	Resolution: SVGA	Resolution: SVGA	Resolution: XGA
Touch switch: Analog resistive film	Touch switch: Analog resistive film	Touch switch: Analog resistive film	Touch switch: Analog resistive film
Wired LAN I/F: 1ch	Wired LAN I/F: 1ch	Wired LAN I/F: 1ch	Wired LAN I/F: 1ch
Serial I/F: 3ch	Serial I/F: 3ch	Serial I/F: 3ch	Serial I/F: 3ch
AUDIO OUT I/F: Provided	AUDIO OUT I/F: Provided	AUDIO OUT I/F: Provided	AUDIO OUT I/F: Provided

V9 Lite Basic model

<div>V9060iL</div> <div>To be released in Fall 2014</div>	<div>V9080iC</div> <div>To be released in Spring 2014</div>	<div>V9100iC</div> <div>To be released in Spring 2014</div>
Type: TFT	Type: TFT	Type: TFT
Size: 5.7 inches	Size: 8.4 inches	Size: 10.4 inches
Resolution: QVGA	Resolution: VGA	Resolution: VGA
Touch switch: Analog resistive film	Touch switch: Analog resistive film	Touch switch: Analog resistive film
Wired LAN I/F: 1ch	Wired LAN I/F: 1ch	Wired LAN I/F: 1ch
Serial I/F: 2ch	Serial I/F: 3ch	Serial I/F: 3ch
AUDIO OUT I/F: Not provided	AUDIO OUT I/F: Not provided	AUDIO OUT I/F: Not provided

User-friendly Operation

Capacitance Type Touch Panel

V9 Advanced type only

In addition to a pressure-sensitive touch panel, capacitance type touch panel is available. This enables easier and smoother operation.



Easy Networking

Wireless LAN V9 Advanced type only

Wireless LAN interface is incorporated in addition to wired LAN. Easily accessible to a device with a wireless LAN interface.



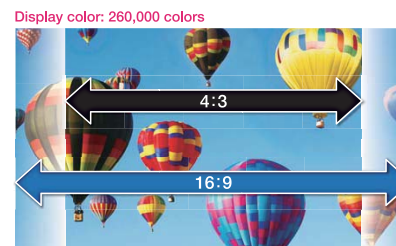
Two Channels for Wired LAN V9 Advanced type only

Two channels are provided for wired LAN in some models. V9 can be used as a gateway between networks.

Improved Expression

Widescreen LCD V9 Advanced type only

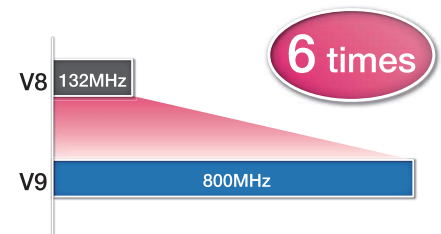
Equipped with high-resolution, widescreen LCD (16:9). Greater volume and variety of information can be displayed on the screen.



Exponentially Improved Performance

High Performance Processor

High-frequency CPU clock enables high-speed response and quick display.



MONITOUCH THE PREMIUM Hello, V9



On its release in 1988 as the first ever programmable display, MONITOUCH augured in a new era of human-machine interface technology.

It is now used as an information terminal for countless different purposes in production sites all over the world. The total number of shipments has reached approximately 1 million.

In April 2014, Hakko Electronics Co., Ltd. will introduce its new range with an impressive array of exciting new cutting-edge features expressly designed to meet the needs of our clients.

MONITOUCH THE PREMIUM
Prepare for the next generation of programmable displays.

Packed with Useful Functions

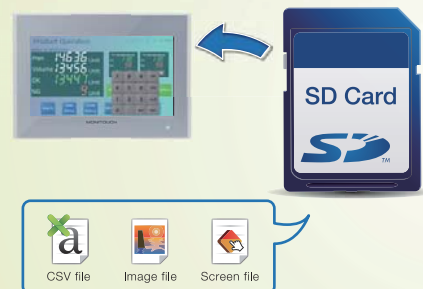
Scheduler

Daily or weekly operation, or operation on a specific date can be set. Operations such as saving of sample data can be scheduled with ease.



Compatible with SD Cards

V9 has an SD card interface.



Screen Transition

15 kinds of functions are available for screen switching and overlapping.

Slide-In

A new screen slides over the current screen.



Box-In

A new screen appears at the center and expands to fill the entire screen.



Swap

A new screen replaces the current screen.



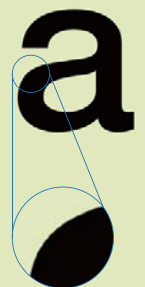
Smooth Font

True type fonts have been added, and the new anti-aliasing function ensures clear expression.

Before smoothing



After smoothing





Enhanced Operation and Display Capacity

Scrolling Function The industry's first

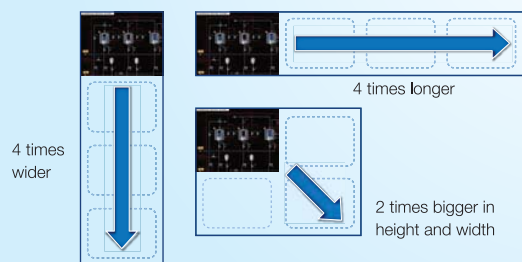
You can view a particular part in close-up while scrolling around the entire screen, enabling a big-picture view and detailed analysis at the same time.

Current position and status can be confirmed instantly using thumbnail images.



Versatile Screen Size

Screens can be enlarged in height and width depending on your needs.



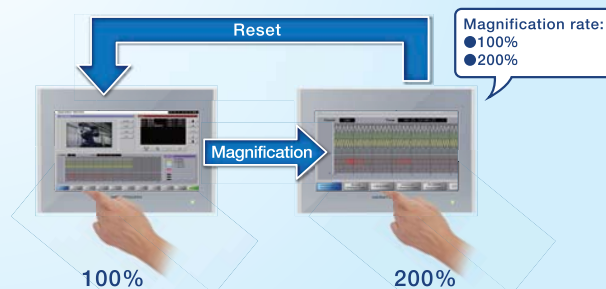
Scaling Function The industry's first

Image can be enlarged up to 150%. The most inaccessible parts can be checked with this function.



Magnification to a Desired Size

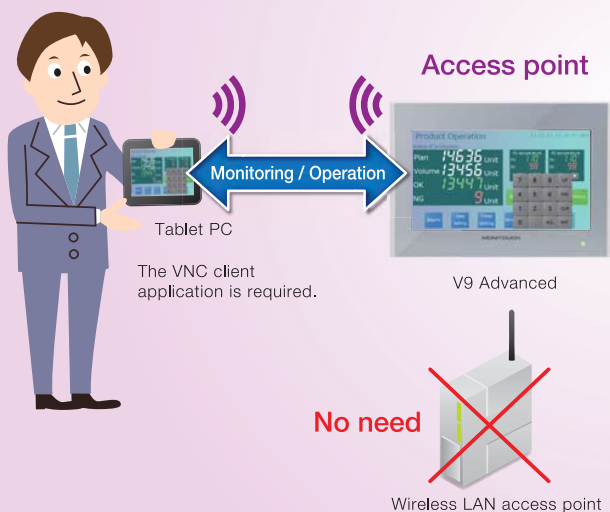
Image can be scaled up and down by double tapping.



Access from Tablet PC via Wireless LAN

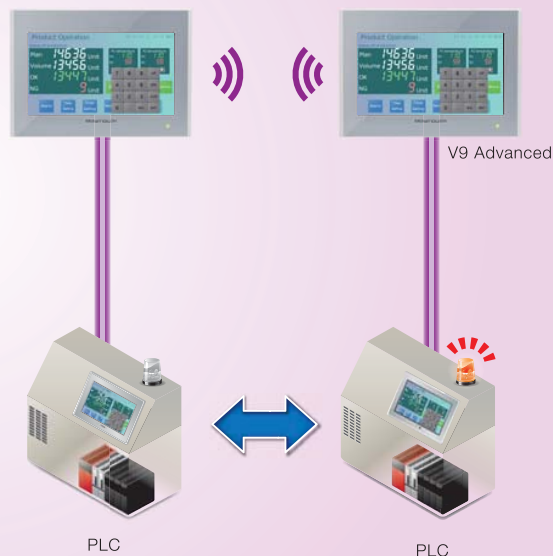
Remote Access to V9

With the VNC server function, V9 can be accessed from a tablet PC running iOS or Android. In addition, the access point function incorporated in V9 enables direct access.



Data Transmission between Panels

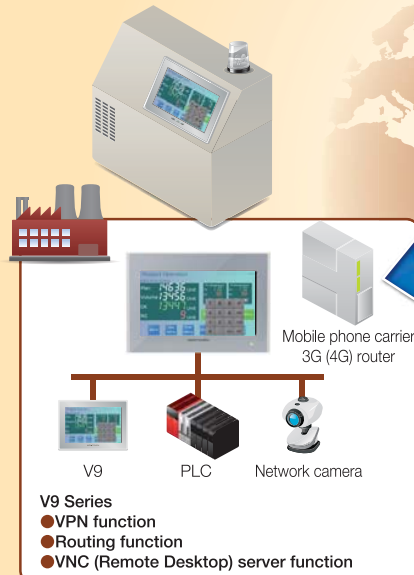
Data can be transferred between devices through V9 as a gateway.



Remote Maintenance with VPN

V9 is fully compatible with VPN, which ensures the security of your network environment. Since V9 Advanced is equipped with a router function, it is possible to control a PLC through V9 remotely via Ethernet.

Production site



Remote access at low cost

- VPN router is not required.
- V9 has a VPN router function.
- VPN software should be installed on the PC.

Easy remote access

- One click to access to VPN
- Accessible to a local IP address
- No need for IP masquerade setting

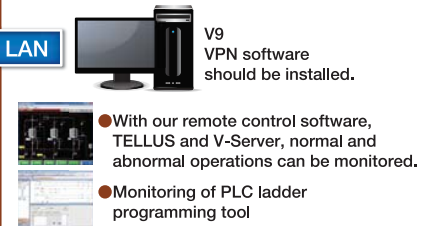
Secure remote access

- VPN protects the system from eavesdropping and falsification.

Office (Machine manufacturer)

Remote maintenance from the office

- Without visiting production sites, you can perform
- Remote monitoring of a production site
 - Remote maintenance of an operation program



Remote maintenance from outside the office

- VPN software should be installed on the mobile terminal.
- V9 screen in the production site can be displayed elsewhere by installing VNC client software.



Cloud System

Data Utilization through Cloud Server

Operation data is transmitted from V9 in a production site to the cloud server at predetermined intervals. The data saved in the cloud server can be monitored without accessing each terminal.

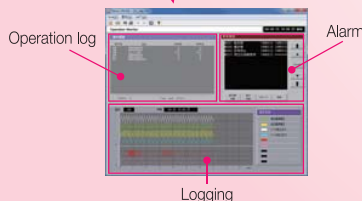
Secure Protection

Provided with a cloud server and a simple application, information such as log data is collected periodically and used for maintenance and the prevention of faults.

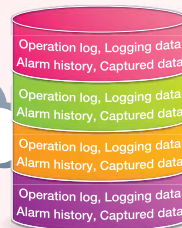
Office (Manufacturer of assembled products)



V-Server EX
Data saved in the cloud server is collected periodically by V-Server EX.



Cloud server

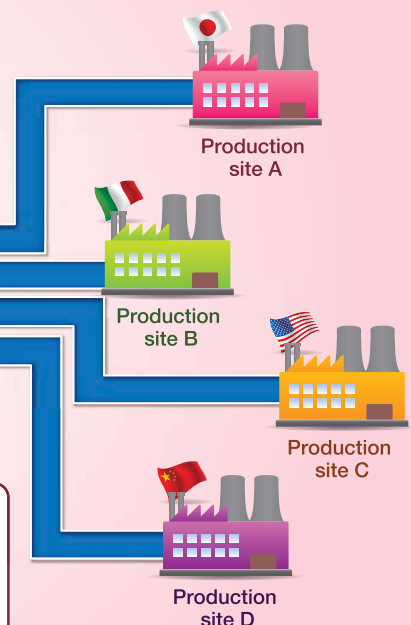


Point 1: Accumulation of Fault Data

Accumulated fault information is used for improvement of the know-how and prevention of future incidents.

Point 2: Easy Information Collection

Data can be obtained easily without visiting the site.



V-SFT Ver. 6 Easy Configuration!



Using fewer steps greatly reduces configuration time.

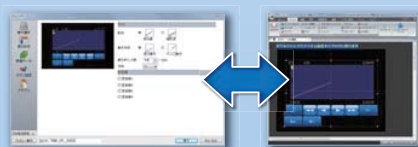
■ Point 1: Streamlined setting procedures

Setting items are arranged in a flow of processes for easy configuration.



■ Point 2: Visualization

Screen configuration can be confirmed on the preview screen. By switching the display between the preview and setting dialog screens, you can figure out the entire layout even with a low-resolution PC.



Switching between the setting dialog and preview screens

■ Point 3: Variation of parts

Increased number of real and sign parts are now available. You can select from a wide range of user-friendly parts.



See you soon.

Hakko Electronics Co., Ltd.

www.monitouch.com

890-1 Kamikashiwano-machi, Hakusan, Ishikawa 924-0035

Tel.+81-76-274-2144 Fax.+81-76-274-5136

9029NE0

131040000