

Programmable Operator Interface

MONITOUCH

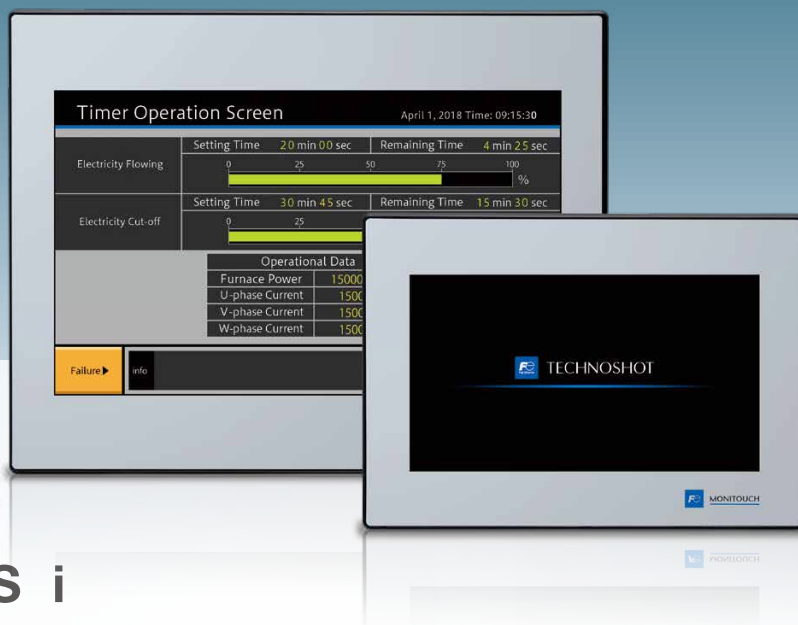
Consolidating Essential Functionality
while Enhancing Operability and Visibility



TECHNOSHOT
TS1000 Smart Series

TECHNOSHOT TS1000 Smart Series

- Supports remote operation via VNC server
- Complies with several global standards (CE/KC/UL/cUL)
- Expands FROM capacity 220%*(26 MB) *Compared to TS1000 series



TS1100Si

TS1070Si

Model

TS1 0 Si

Display size
07: 7.0" widescreen
10: 10.2" widescreen

Specifications



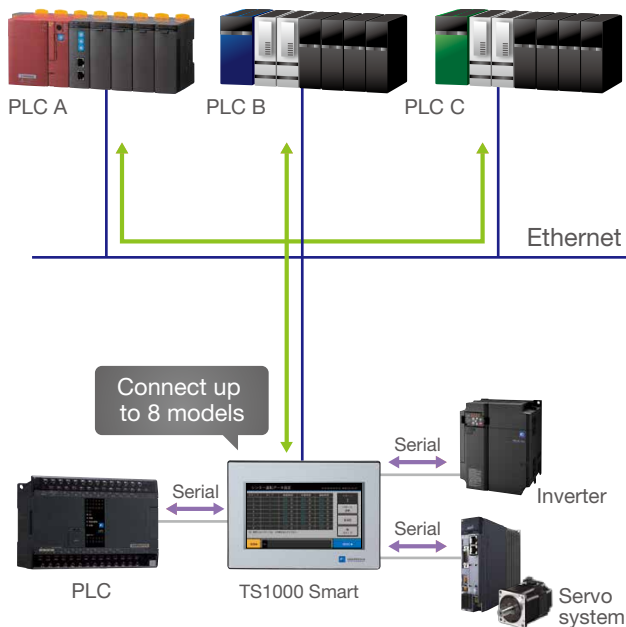
Item		TS1070Si	TS1100Si
Main unit	Screen size	7.0" widescreen	10.2" widescreen
	Display device	TFT color	
	Resolution	800 × 480 dots	
	Colors	65,536 colors	
	Backlight	LED	
	Touch screen	Analog resistive	
	Certifications	CE/KC/UL/cUL	
User memory	FROM	26MB	
	SRAM	128KB	
External interface	COM1 D-Sub9 pin (female)	RS-422/RS-485 (4-wire/2-wire) Data length: 7, 8 bits Parity: Even, odd, none Stop bits: 1, 2 dots Baud rate: 4,800, 9,600, 19,200, 38,400, 57,600, 76,800, 115,200, 187,500*1bps	
	COM2/COM3 D-Sub9 pin (male)	COM2: RS-232C COM3: RS-422/RS-485 (2-wire) Data length: 7, 8 bits Parity: Even, odd, none Stop bits: 1, 2 bits Baud rate: 4,800, 9,600, 19,200, 38,400, 57,600, 76,800, 115,200 bps	
	Ethernet	1 ch	
	USB-A	1 ch	
	USB mini-B	1 ch	
Power supply	Permissible range of voltage	DC24V±10%	
	Power consumption (max. rating)	11 W or less	12 W or less
Physical environment	Ambient temperature	0 to 50°C*2	
	Ambient humidity	85% RH or less (without dew condensation)*2	
	Contamination level	2	
	Operation altitude	2,000 m or less	
	Atmosphere	No exposure to corrosive gas or conductive dust	
	Ambient storage temperature	-10 to 60°C*2	
	Ambient storage humidity	85% RH or less (without dew condensation)*2	
Installation conditions	Protective structure	IP65 equivalent (when using waterproof gasket*3)/IP40 equivalent (when not using a waterproof gasket*3)	
	Panel front Rear case	IP20 equivalent	
	Dimensions W×H×D	198.8 × 141.8 × 38.0 mm	266.8 × 206.8 × 38.0 mm
	Panel cutout	189.0 × 134.0 (+0.5/-0) mm	257.0 × 199.0 (+0.5/-0) mm
Case color		Black	

*1 187,500 bps is only for Siemens MPI/PPI communications. *2 Use at a wet-bulb temperature of 39°C or less because higher temperatures may cause failure. *3 This is an optional accessory.

Lineup of Usability Enhancing Features

01 8-Way Communication

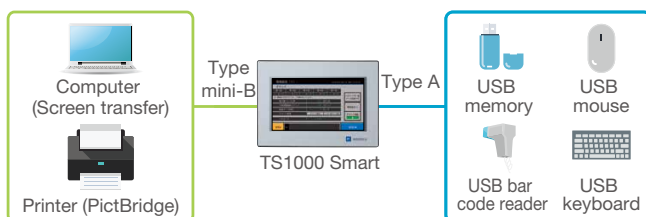
Connect up to eight types of PLC or other devices of various models from multiple manufactures at the same time via both an Ethernet and serial connection.



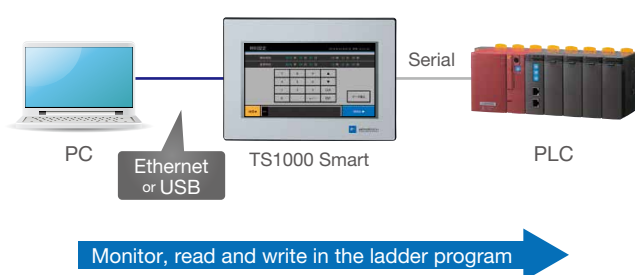
* With TS1070S, up to 3 models can be connected.

02 Expanded Connectivity

- USB port (USB Ver. 2.0 compatible)
USB port is built-in standard. Use the Type A and Type mini-B to connect to a wide range of devices.



- Ladder transfer
Monitor, read and write in the ladder program by computer via TS1000 Smart. Choose from either Ethernet or USB to connect between the computer and TS1000 Smart.



03 Trend Sampling

TS1000 Smart series chronologically records a broad-range of data that changes over time to display as trend graphs.

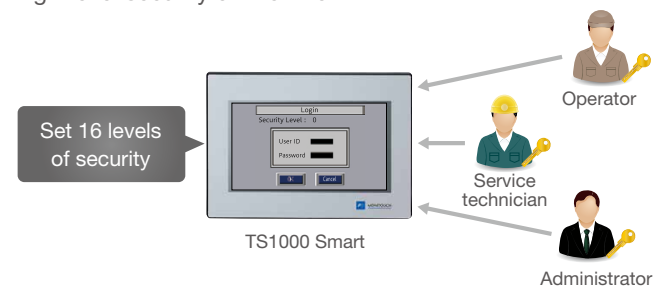
- Enlarged Display Support

Enlarge the display for a particular area of the screen to verify changing waveforms of trend graphs in even more detail.



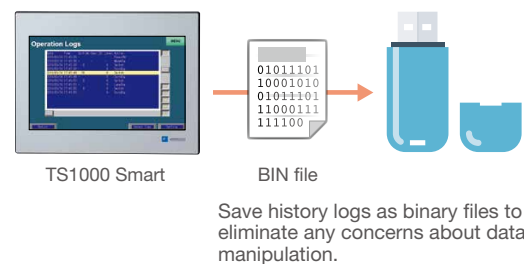
04 Security Features

Restrict functions according to the user to configure a high-level security environment.



05 Operation Log

Record chronological on-screen input, from switch operations to numerical inputs. Combine the operation log with security features and review attribution information to assist in identifying the cause of errors as well as aid in other diagnostics.



06 Multilanguage

Easily toggle between up to 16 on-screen languages from a single screen to eliminate the need to sort and manage files for each language.



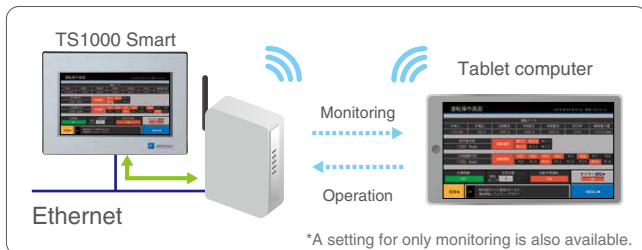
Compatible fonts:

Japanese, English/Western Europe, Chinese (Traditional), Chinese (Simplified), Korean, central European alphabets, Cyrillic alphabets, Greek, Turkish, and Baltic alphabets

01 VNC Server

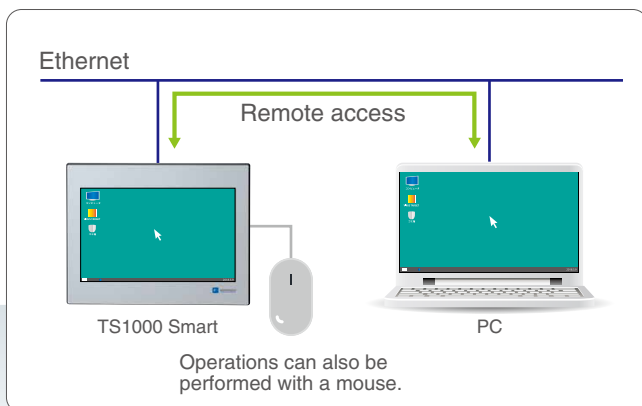
Easily setup the VNC viewer tool on a computer to monitor and operate TS1000 Smart screens on the factory floor via the same computer over Ethernet connection.

In addition, monitoring and operations can be easily conducted from a tablet device over wireless router.



02 Remote Desktop*

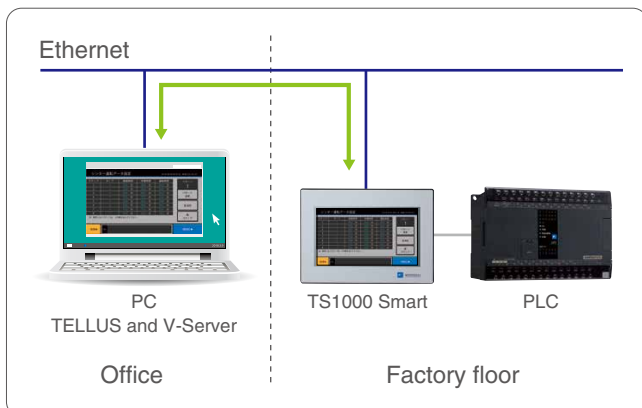
Connect via Ethernet to display and operate the server directly using TS1000 Smart.



*A license for V-RemoteDT (usage license) is required.

03 Remote Maintenance

Use the TELLUS application software to easily monitor and operate TS1000 Smart screen and PLC information remotely at low cost.



A Wealth of Network Features

TS1070Si



Application software to connect offices and factory floors at minimal cost

TELLUS and V-Server

The VNC server feature is a remote monitoring and management system able to collect real-time information about factory floors, including data aggregation and data management, via the Internet whether at the office or from overseas.

Catalog No. 9022NE2

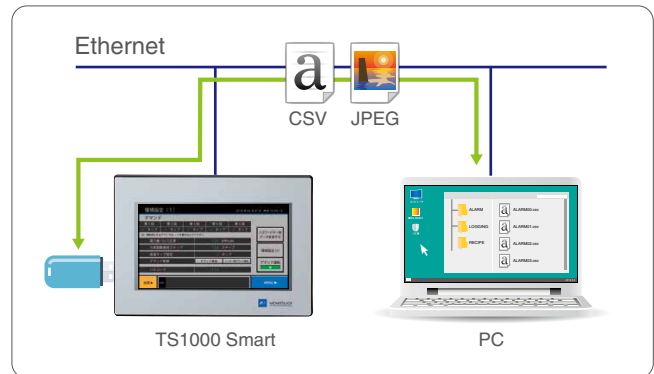


res to Connect via Ethernet



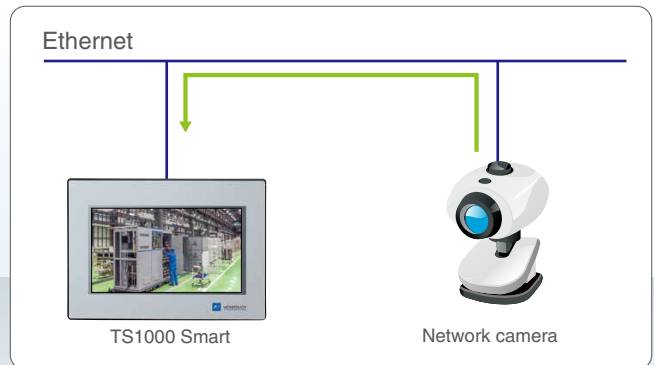
04 FTP Server

Use FTP client tools on a computer to read and write to USB memory mounted on TS1000 Smart.



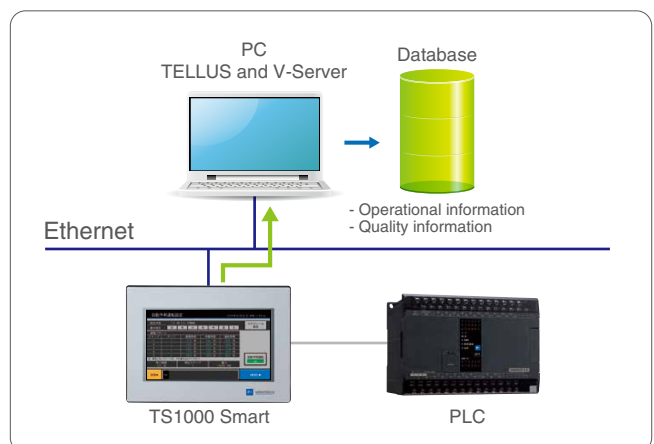
05 Network Camera

Display video from a network camera connected via Ethernet with TS1000 Smart. TS1000 Smart can also monitor factory floors.

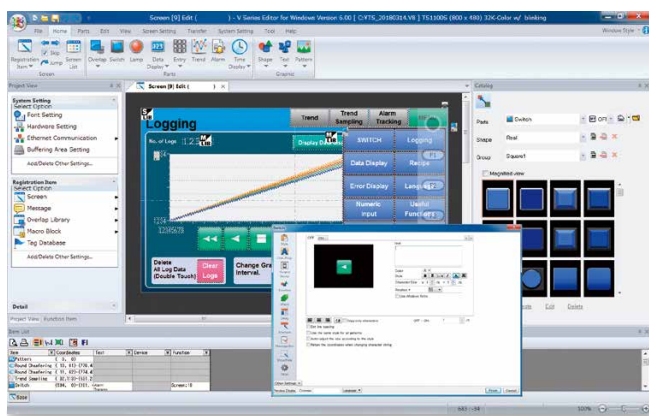


06 MES (Manufacturing Execution System)

Collect broad information to store in the server database from production performance to defects and the causes of stoppages with TS1000 Smart through the V-Server.



Achieve Sleeker Screens with Easy-to-Understand Operations



V-SFT Ver. 6

Computer	PC/AT compatible computer running Windows
Operating system*	Windows XP/XP 64Edition/Windows Vista (32bit, 64bit)/Windows 7 (32bit, 64bit)/Windows 8 (32bit, 64bit)/Windows 8.1 (32bit, 64bit)/Windows 10 (32bit, 64bit)
CPU	Pentium 4 2.0 GHz or higher is recommended
Memory	2.0 GB or higher
Hard disc	When installed: 2.0 GB or higher
Disc device	DVD-ROM drive
Display	1,024 × 768 (XGA) resolution or higher
Display colors	High color (16 bits) or higher
Other	Microsoft .NET Framework 4.0 or 4.5 (Microsoft .NET Framework 4.0 is installed automatically on computers that do not have either Microsoft .NET Framework 4.0 or 4.5 installed.)

*Administrator privileges are required for installation.

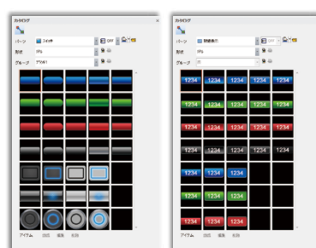
01 Sophisticated Line-up of Icons

V-SFT Ver. 6 offers a combination of real sign and plain icons that allow users to easily create more sophisticated screens than ever before.



Plain Icons

A wide range of icon designs have been newly added with a design that closely resembles smartphones and other familiar devices.



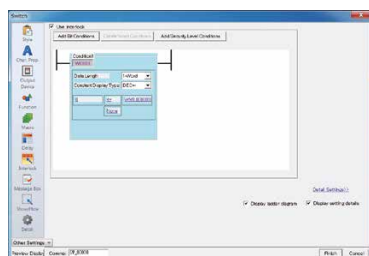
Real Icons

V-SFT expands conventional real icons even further.



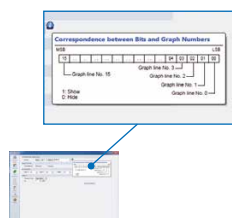
02 Expands Interlock Settings

Set the interlock via the ladder diagram display. The condition settings are easy to understand and convenient even when setting multiple conditions.



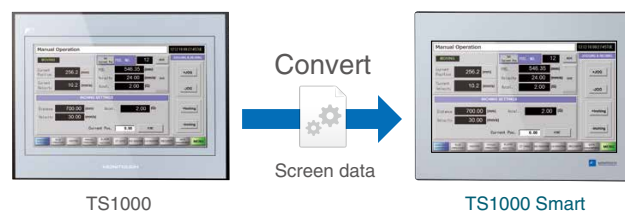
03 Supports Configuration with Tool Hints

Comprehensive tool hints throughout the software support the programming of applications. Easily configure settings without a manual by simply moving the mouse close to a setting to automatically display a supplementary description.



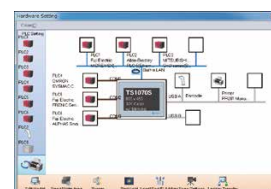
04 Supports Conversion from TS1000 Series

Screen data from previous models created in older versions of V-SFT can be converted in its present form to data for the current model. This allows users to leverage their screen data assets from previous models.



05 Intuitively Capture the Connection Device Configuration

The visual representation of the hardware settings make clear which devices are connected to TS1000 Smart.



Motion System Driving the Best Performance Together with TS1000 Smart Series

Programmable Controller **MICREX-SX** Series

SPF

Achieves excellent cost performance
Flexibly supports machine based systems

- ◆ High-speed, high-functioning computing performance
- ◆ Variety of options for flexible applications
- ◆ 200kHz, compatible with up to 4-axis servo systems

MICREX-SX SPF Plus provides advanced motion control, such as synchronous and circular interpolation controls.



Catalog No. 22B1-E-0019

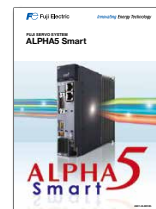


Fuji Servo System

ALPHA⁵ Smart

Servo System with Enhanced Ease-of-Use

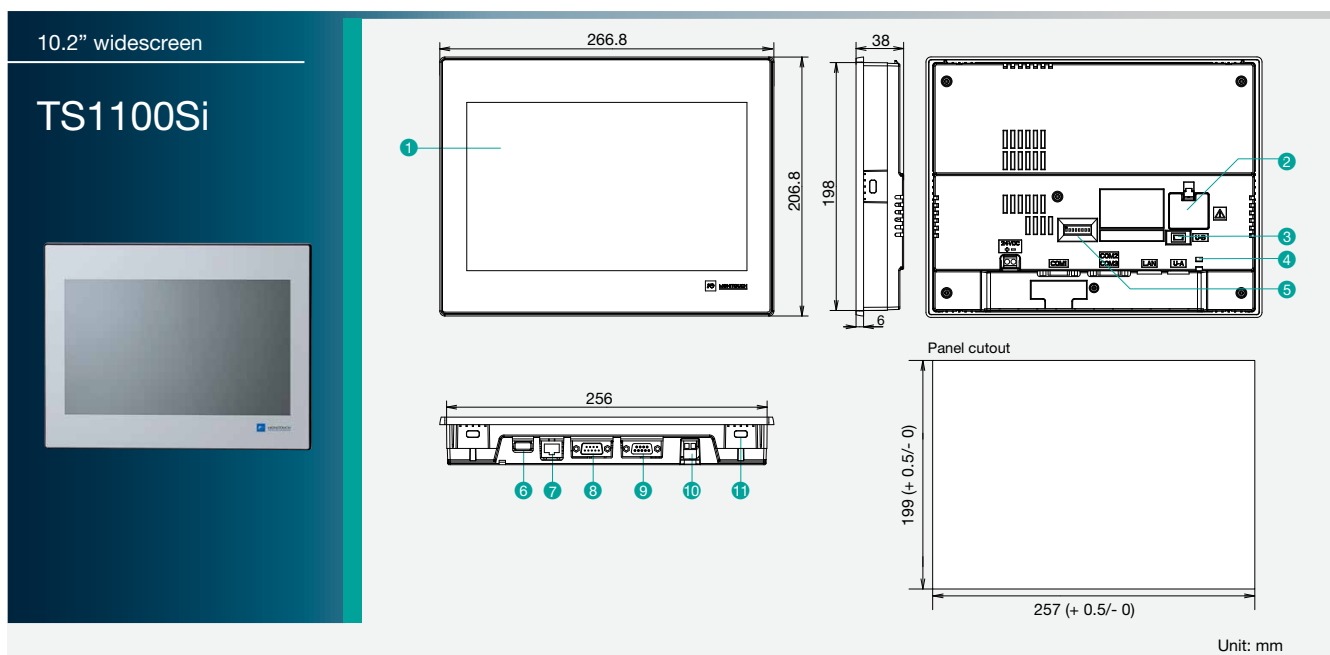
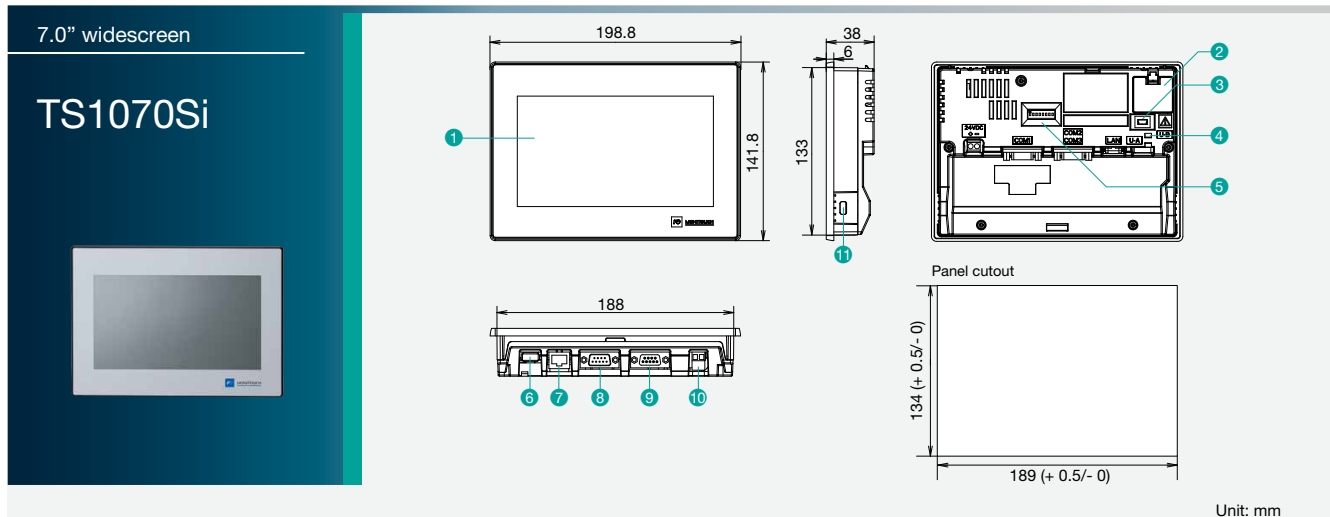
- ◆ High-speed, high precision positioning
 - Frequency response 1500Hz
 - Max motor speed 6000r/min
 - High resolution encoder
 - 18bit ABS/INC 262,144 pulse
 - 20bit INC 1,048,576 pulse
- ◆ Higher cost performance with original main feature
- ◆ New servo operator offers improved usability



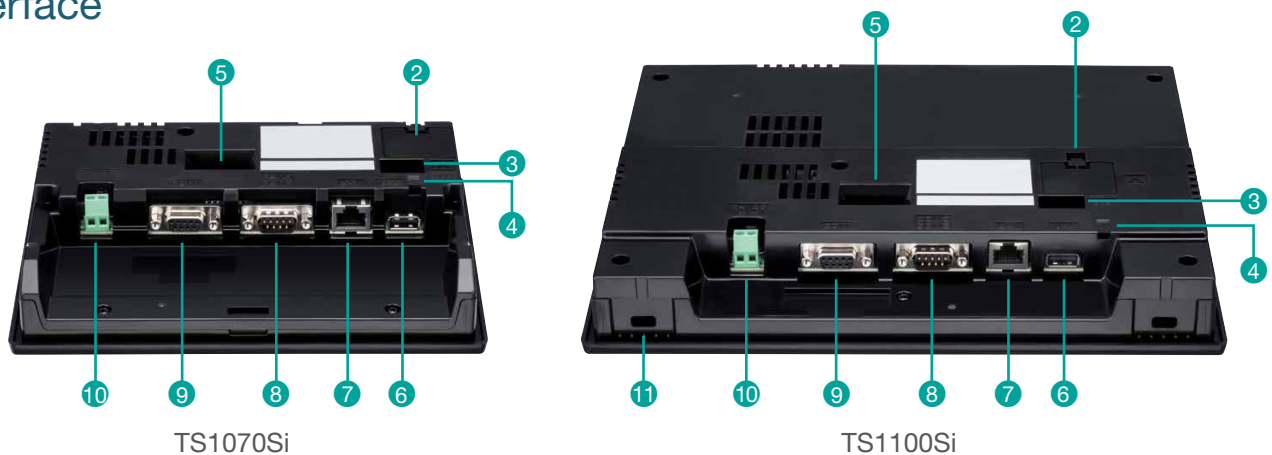
Catalog No. 24C1-E-0010



Dimensions



Interface

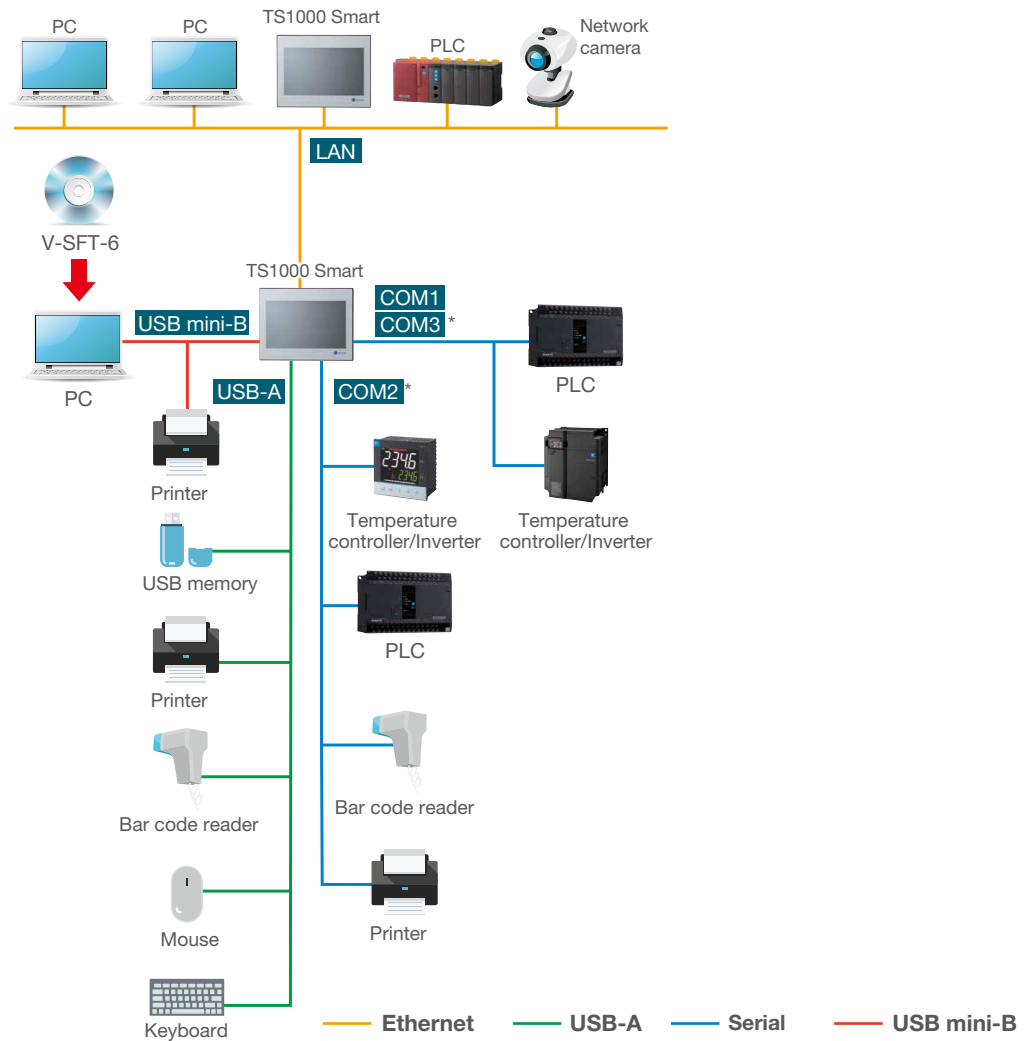


- 1 Display
- 2 Battery compartment
- 3 USB mini-B (U-B)
- 4 USB cable retention
- 5 DIP switch
- 6 USB-A (U-A)
- 7 100BASE-TX/10BASE-T connector (LAN)

- 8 RS-232C/RS-422/RS-485 connector (COM2/COM3)
- 9 RS-422/RS-485 connector (COM1)
- 10 Power input terminal block
- 11 Mounting point

System Configuration

TS1070Si
TS1100Si



*COM2 and COM3 are the same port.
COM2 and COM3 can be used at the same time.

Optional Accessories

Terminal Converter TC-D9

Use the terminal converter if the communication device is connected with TS1000 Smart series via the RS-422/485 block. (COM1)



Waterproof Gasket TS1070S-WP/TS1100S-WP

Use the waterproof gasket if an IP65 protective structure is necessary. This gasket can be used regardless of the Ethernet connection.



Cable for USB-A Port UA-FR

The cable is used when connecting the USB-A (sleeve) port via the board. (Cable length: 1 m)



Connection Device List (PLC)

As of April 2018

Manufacturer	Models
Fuji Electric	MICREX-F series
	MICREX-F series V4-compatible
	SPB (N mode) & FLEX-PC series
	SPB (N mode) & FLEX-PC CPU
	MICREX-SX SPH/SPB/SPM/SPE/SPF series
Allen-Bradley	MICREX-SX SPH/SPB/SPM/SPE/SPF CPU
	MICREX-SX (Ethernet)
	PLC-5
	PLC-5 (Ethernet)
	SLC500
	SLC500 (Ethernet TCP/IP)
	NET-ENI (SLC500 Ethernet TCP/IP)
	NET-ENI (MicroLogix Ethernet TCP/IP)
	MicroLogix
	MicroLogix (Ethernet TCP/IP)
	ControlLogix / CompactLogix
	ControlLogix (Ethernet)
	Micro800 Controllers
	Micro800 Controllers (Ethernet TCP/IP)
	Direct LOGIC (K-Sequence)
Automationdirect	Direct LOGIC (Ethernet UDP/IP)
	Direct LOGIC (MODBUS RTU)
Azbil	MX series
Baumuller	BMx-x-PLC
BECKHOFF	AD5 protocol (Ethernet)
CIMON	BP series
	CP series
	S series
DELTA	S series (Ethernet)
	DVP series
	DVP series (MODBUS ASCII)
EATON Cutler-Hammer	DVP series (MODBUS TCP/IP)
	ELC
EMERSON	EC10/20/20H (MODBUS RTU)
FANUC	Power Mate
Fatek Automation	FACON FB series
FESTO	FEC
FUFENG	APC series Controller
GE Fanuc	90 series
	90 series (SNP-X)
	90 series (SNP)
	90 series (Ethernet TCP/IP)
	RX3i (Ethernet TCP/IP)
Hitachi	HIDIC-S10/2a,S10mini
	HIDIC-S10/2a,S10mini (Ethernet)
	HIDIC-S10/4a
	HIDIC-S10V
	HIDIC-S10V (Ethernet)
Hitachi Industrial Equipment Systems	HIDIC-H
	HIDIC-H (Ethernet)
	HIDIC-EHV
	HIDIC-EHV (Ethernet)
HYUNDAI	Hi5 Robot (MODBUS RTU)
	Hi4 Robot (MODBUS RTU)
IDEC	MICRO 3
	MICRO Smart
Jetter	MICRO Smart pentra
	JetControl series2/3 (Ethernet UDP/IP)
JTEKT	TOYOPUC
	TOYOPUC (Ethernet)
	TOYOPUC (Ethernet PC10 mode)
	TOYOPUC-Plus
	TOYOPUC-Plus (Ethernet)
	TOYOPUC-Nano (Ethernet)
KEYENCE	KZ series Link
	KZ-A500 CPU
	KZ/KV series CPU
	KZ24/300 CPU
	KV10/24 CPU
	KV-700
	KV-700 (Ethernet TCP/IP)
	KV-1000
	KV-1000 (Ethernet TCP/IP)
	KV-3000/5000
KOYO ELECTRONICS	KV-3000/5000 (Ethernet TCP/IP)
	KV-7000 (Ethernet TCP/IP)
LS	SU/SG
	SR-T (K protocol)
	SU/SG (K-Sequence)
MITSUBISHI ELECTRIC	SU/SG (MODBUS RTU)
	MASTER-KxxxS
	MASTER-KxxxS CNET
	MASTER-K series(Ethernet)
	GLOFA CNET
	GLOFA GM7 CNET
	GLOFA GM series CPU
	GLOFA GM series (Ethernet UDP/IP)
	XGT/XGK series CNET
	XGT/XGK series CPU
	XGT/XGK series (Ethernet)
	XGT/XGI series CNET
	XGT/XGI series CPU
	XGT/XGI series (Ethernet)
	A series link
MITSUBISHI ELECTRIC	QnA series link
	QnA series (Ethernet)
	QnH (Q) series link
	QnH (Q) series CPU
	QnU series CPU
	Q00J/00/01 CPU
	QnH (Q) series (Ethernet)
	QnH (Q) series link (multi CPU)
	QnH (Q) series (multi CPU) (Ethernet)
	QnH (Q) series CPU (multi CPU)
	QnH (Q) series (Ethernet ASCII)
	QnH (Q) series (multi CPU) (Ethernet ASCII)
	QnU series (built-in Ethernet)
	L series link
	L series (built-in Ethernet)
	L series CPU
	FX2N/1N series CPU
	FX1S series CPU
	FX series link (A protocol)

Manufacturer	Models
MITSUBISHI ELECTRIC	FX-3U/3UC/3G series CPU
	FX-3U/3GE series (Ethernet)
	FX-3U/3UC/3UG series link (A protocol)
	FX-5U/5UC series
	FX-5U/5UC series (Ethernet)
	A-link + Net10
	Q170MPCPU (multi CPU)
	Q170 series (multi CPU) (Ethernet)
	IQ-R series(Built-in Ethernet)
	IQ-R series link
MODICON	IQ-R series (Ethernet)
MOELLER	MODBUS RTU
OMRON	PS4
	SYSMAC C
	SYSMAC CV
	SYSMAC CS1/CJ1
	SYSMAC CS1/CJ1 DNA
	SYSMAC CS1/CJ1 (Ethernet)
	SYSMAC CS1/CJ1 (Ethernet Auto)
	SYSMAC CS1/CJ1 DNA (Ethernet)
	NJ Series (EtherNet/IP)
	FP series (RS232C/422)
Panasonic	FP series (TCP/IP)
	FP series (UDP/IP)
	FP-X (TCP/IP)
	FP7 series (RS232C/422)
	FP7 series (Ethernet)
RS Automation	NX7/NX Plus series (70P/700P/CCU+)
	N7/NX series (70/700/750/CCU)
	NX700 series (Ethernet)
	X8 series
	X8 series (Ethernet)
SAIA	PCD
SAMSUNG	PCD S-BUS (Ethernet)
	SPC series
SHARP	N_plus
	SECNET
	JW series
	JW100/70H COM port
	JW20 COM port
Siemens	JW series (Ethernet)
	JW300 series
	JW311/312/321/322 series (Ethernet)
	JW331/332/341/342/352/362 series (Ethernet)
	S5 PG port
	S7
	S7-200 PPI
	S7-200 (Ethernet ISOTCP)
	S7-300/400 MPI
	S7-300/400 (Ethernet ISOTCP)
SINFONIA TECHNOLOGY	S7-300/400 (Ethernet TCP/IP protocol)
	S7-1200/1500 (Ethernet ISOTCP)
	TI500/505
	TI500/505 V4 Compatible
	SELMART
	TECO
	TP-03 (MODBUS RTU)
	TSX Micro
	T series /V series (T compatible)
	T series /V series (T compatible) (Ethernet UDP/IP)
TOSHIBA	EX series
TOSHIBA MACHINE	nv series(Ethernet UDP/IP)
TOYO DENKI	TC200
	μGPCsx series
	μGPCsx CPU
	μGPCsx series (Ethernet)
	Ultra Instruments
Turck	BL series Distributed I/O (MODBUS TCP/IP)
Ultra Instruments	UIC CPU (MODBUS ASCII)
UNITRONICS	M90/M91/Vision series (ASCII)
VIGOR	Vision series (ASCII Ethernet TCP/IP)
WAGO	M series
XINJE	750 series (MODBUS RTU)
	750 series (MODBUS Ethernet)
	XC series (MODBUS RTU)
	Memobus
	CP9200SH/MP900
Yaskawa Electric	MP2300 (MODBUS TCP/IP)
	CP/MP expansion memobus (UDP/IP)
	MP2000 series
	MP2000 series (UDP/IP)
	MP3000 series
	MP3000 series (Ethernet UDP/IP)
	MP3000 series expansion memobus (Ethernet)
	FA-M3
	FA-M3R
	FA-M3/FA-M3R (Ethernet UDP/IP)
Yokogawa Electric	FA-M3/FA-M3R (Ethernet UDP/IP ASCII)
	FA-M3/FA-M3R (Ethernet TCP/IP)
	FA-M3/FA-M3R (Ethernet TCP/IP ASCII)
	FA-M3V
	FA-M3V (Ethernet)
None	FA-M3V(Ethernet ASCII)
	Universal serial
	Without PLC Connection
	MODBUS RTU
	MODBUS RTU EXT Format
	MODBUS TCP/IP (Ethernet)
	MODBUS TCP/IP (Ethernet) Sub Station
	MODBUS TCP/IP (Ethernet) EXT Format
	MODBUS ASCII

Connection Device List (Temperature Controller/Servo/Inverter)

As of April 2018

Manufacturer	Models
Fuji Electric	PYX (MODBUS RTU)
	PXR (MODBUS RTU)
	PXF (MODBUS RTU)
	PXG (MODBUS RTU)
	PXH (MODBUS RTU)
	PUM (MODBUS RTU)
	F-MPC04P (loader)
	F-MPC series/FePSU
	FVR-E11S
	FVR-E11S (MODBUS RTU)
	FVR-C11S (MODBUS RTU)
	FRENIC5000 G11S/P11S
	FRENIC5000 G11S/P11S (MODBUS RTU)
	FRENIC5000 VG7S (MODBUS RTU)
	FRENIC-Ace (MODBUS RTU)
	FRENIC-Eco (MODBUS RTU)
	FRENIC-HVAC/AQUA (MODBUS RTU)
	FRENIC-MEGA (MODBUS RTU)
	FRENIC-MEGA SERVO (MODBUS RTU)
	FRENIC-Mini (MODBUS RTU)
	FRENIC-Multi (MODBUS RTU)
	FRENIC-VG1 (MODBUS RTU)
	FRENIC series (loader)
	HFR-C9K
	HFR-C11K
	HFR-K1K
	PPMC (MODBUS RTU)
	FALDIC-α series
	FALDIC-W series
	PH series
	PHR (MODBUS RTU)
	WAS000
	APR-N (MODBUS RTU)
	ALPHAS (MODBUS RTU)
	ALPHAS Smart (MODBUS RTU)
	WE1MA (Ver. A)(MODBUS RTU)
	WE1MA (Ver. B)(MODBUS RTU)
	WSZ series
	WSZ series (Ethernet)
Agilent	4263 series
ASAHI ENGINEERING	Stepping Motor
Azbil	SDC10
	SDC15
	SDC20
	SDC21
	SDC25/26
	SDC30/31
	SDC35/36
	SDC45/46
	SDC40A
	SDC40G
	DMC10
	DMC50 (COM)
	AHC2001
	AHC2001+DCP31/32
	DCP31/32
	NX (CPL)
	NX (MODBUS RTU)
	NX (MODBUS TCP/IP)
	AD4402 (MODBUS RTU)
	AD4404 (MODBUS RTU)
A&D	AD4402 (MODBUS RTU)
Banner	Presence PLUS (Ethernet/IP (TCP/IP))
Bosh Rexroth	Indra Drive
CHINO	LT400 series (MODBUS RTU)
	DP1000
	DB1000B (MODBUS RTU)
	KR2000 (MODBUS RTU)
	LT230 (MODBUS RTU)
	LT300 (MODBUS RTU)
	LT830 (MODBUS RTU)
DELTA TAU DATA SYSTEMS	PMAC
Gammaflux	PMAC (Ethernet TCP/IP)
High-Pressure Gas Industry	TTC2100
Hitachi Industrial Equipment Systems	R-BLT
	SJ300 series
	SJ700 series
IAI	X-SEL controller
	ROBO CYLINDER (RCP2/ERC)
	ROBO CYLINDER (RCS/E-CON)
	PCON/ACON/SCON (MODBUS RTU)
KOGANEI	IBFL-TC
Lenze	Servo Drive 9400 (Ethernet TCP/IP)
MITSUBISHI ELECTRIC	FR-*500
	FR-V500
	MR-J2S-*A
	MR-J2S-*CL
	MR-J3-*A
	MR-J3-*T
	MR-J4-*A
	FR-E700
MOOG	J124-04x series
M-SYSTEM	R1M series (MODBUS RTU)
OMRON	E5AK
	E5AK-T
	ESAN/ESEN/ESCN/ESGN
	ESAR/ESER
	E5CK
	E5CK-T
	ESCN-HT
	E5EK
	E5ZD
	E5ZE
	E5ZN
	V600/620/680
	KM20
	KM100
	V680S (Ethernet TCP/IP)
Oriental Motor	High-efficiency AR series (MODBUS RTU)
Panasonic	CRK series (MODBUS RTU)
	LP-400
	KW series

Manufacturer	Models
Panasonic	MINAS A4 series
RKC	SR-Mini (MODBUS RTU)
	CB100/CB400/CB500/CB700/CB900 (MODBUS RTU)
	SR-Mini (Standard Protocol)
	REX-F400/F700/F900 (Standard Protocol)
	REX-F9000 (Standard Protocol)
	SRV (MODBUS RTU)
	MA900/MA901 (MODBUS RTU)
	SRZ (MODBUS RTU)
	FB100/FB400/FB900 (MODBUS RTU)
	CSD5 (MODBUS RTU)
RS Automation	Moscon-F50 (MODBUS RTU)
SANMEI	Cutty Axis
SanRex	DC AUTO (HKD type)
SHARP	DS-30D
	DS-32D
SHIMADEN	SHIMADEN standard protocol
SHINKO TECHNOS	C series
	FC series
	GC series
	DCL-33A
	JCx-300 series
	PC-900
	PCD-33A
	ACS-13A
	ACD/ACR series
	WCL-13A
Siemens	S120 (Ethernet ISOTCP)
SUS	XA-A*
TOHO	TTM-000
	TTM-00BT
	TTM-200 (MODBUS RTU)
Tokyo Chokoku Marking Products	MB3315/1010
TOSHIBA	VF-S7
	VF-S9
	VF-S11
	VF-S15
	VF-A7
	VF-AS1
	VF-P7
	VF-PS1
	VF-FS1
	VF-MB1
	VF-nC1
	VF-nC3
	VELCONIC series
TOSHIBA MACHINE	G-TRAN series
ULVAC	
UNIPULSE	F340A
	F371
	F800
	F720A
	F805A
YAMAHA	RCX142
Yaskawa Electric	DX200 (High-Speed Ethernet)
Yokogawa Electric	UT100
	UT750
	UT550
	UT520
	UT350
	UT320
	UT2400/2800
	UT450
	UT32A/35A (MODBUS RTU)
	UT52A/55A (MODBUS RTU)
	UT75A (MODBUS RTU)
None	μR10000/20000 (Ethernet TCP/IP)
	MODBUS RTU
	MODBUS TCP/IP (Ethernet)

*The names of the companies and products included in this document are the trademarks or registered trademarks of their respective companies.
 *TS1070S does not support an Ethernet connection.



Safety Considerations

- For safe operation, read the instruction manual or user manual that comes with the product carefully or consult the distributor from which you purchased the product, before using the product.
- Products introduced in this catalog have not been designed or manufactured for such applications in a system or equipment that will affect human bodies or lives.
- Customers, who want to use the products introduced in this catalog for special systems or devices such as for atomic-energy control, aerospace use, medical use, passenger vehicle, and traffic control, are requested to consult the Hakko Overseas Sales Section.
- Customers are requested to prepare safety measures when they apply the products introduced in this catalog to such systems or facilities that will affect human lives or cause severe damage to property if the products become faulty.
- For safe operation, wiring should be conducted only by qualified engineers who have sufficient technical knowledge about electrical work or wiring.

Notes to consider before purchasing

- Appearance and specifications are subject to modification without prior notice due to technical improvements.
- Colors in the catalog may differ from the actual colors due to printing inaccuracies.
- Consult your distributor or us for further information about products in this catalog.

Fuji Electric Co., Ltd.

URL : www.fujielectric.com/
Gate City Ohsaki, East Tower,
11-2, Osaki 1-chome, Shinagawa-ku, Tokyo 141-0032, Japan
Phone : +81-3-5435-7066
Fax : +81-3-5435-7420

www.monitouch.com/