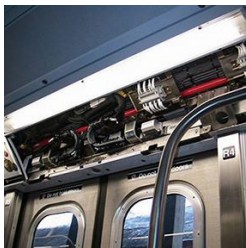


Fuji SEMEC is a leader in transit systems solutions. By combining Fuji Electric's technological capabilities in design and production engineering to SEMEC's designs for door opening and closing devices, Fuji SEMEC is able to deliver world-class products.



SEMEC Solutions



Door Systems

Fuji SEMEC offers high-performance transit door systems, in electric, pneumatic or manual configurations. Available in stainless steel, painted steel and anodized aluminum, these systems are fully-tested to ensure superior reliability.



Bench Test Equipment

Fuji SEMEC offers high-performance bench test equipment, including computerized bench test and test jigs.



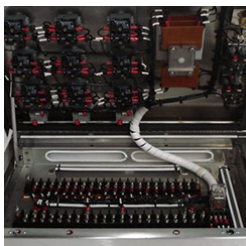
Door Auxiliary Systems (Accessories)

Fuji SEMEC provides a full array of accessories for door systems, including operators, master door control panels, relay panels, crew switches, exit emergency handles, electronic door controls, outside signal lights, pneumatic door controls, and vestibule end doors.



Overhaul

Fuji SEMEC offers complete and partial overhaul services, including re-engineering of obsolete parts with functional testing. Overhaul components include door operators, switch panels, mechanical locks, and emergency release mechanisms.



Complex Electrical Harness

Fuji SEMEC has a capability of designing and delivering complex electrical harness.