

Engineering & Assembly Facility

Roanoke, Virginia

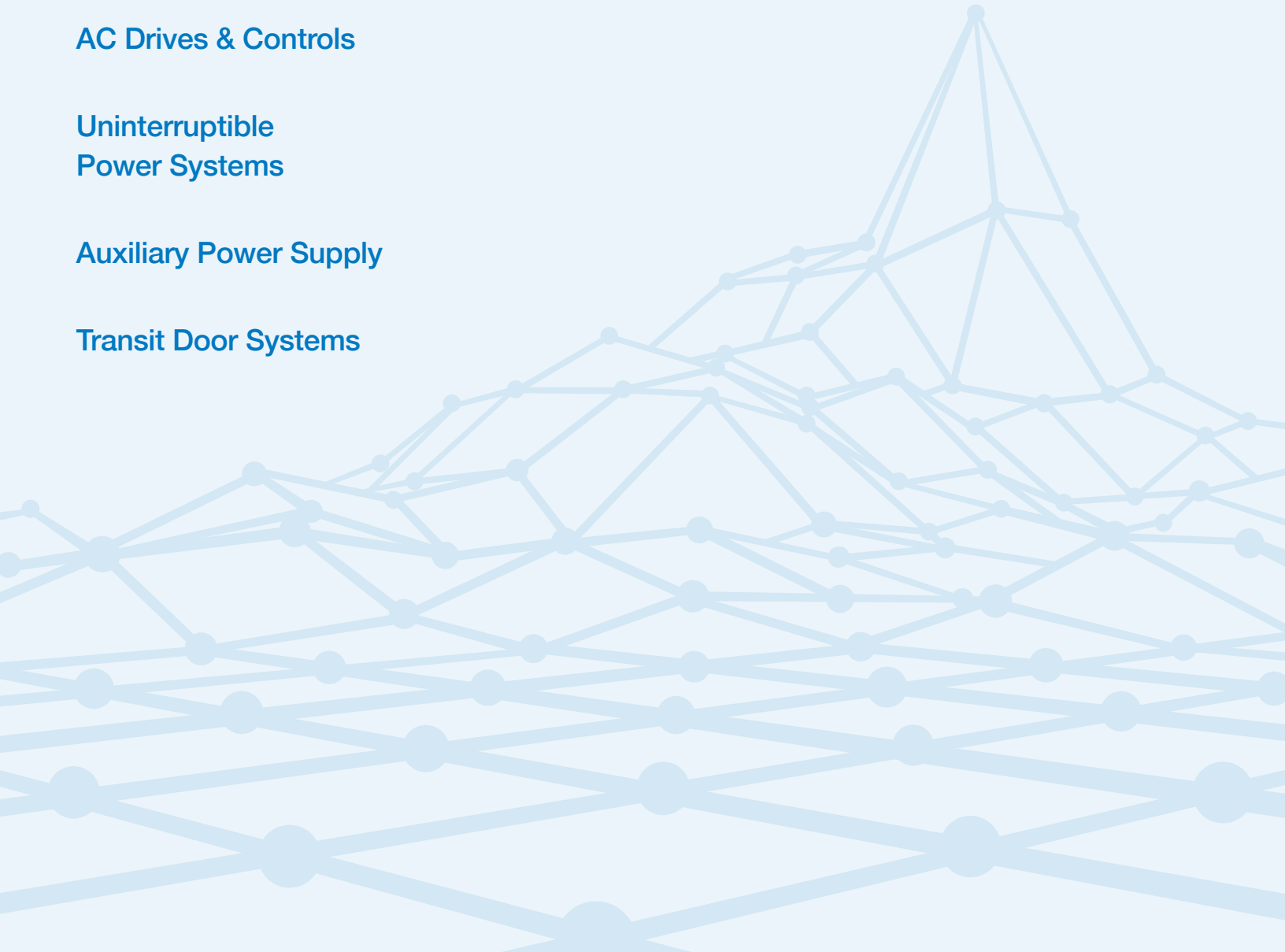


AC Drives & Controls

Uninterruptible
Power Systems

Auxiliary Power Supply

Transit Door Systems



ENGINEERING & VALUE-ADDED SERVICES

With Fuji Electric, Engineering and Value-Added Services Begin Here!

Fuji Electric has a 100-year history of going the extra mile to better serve our customers, whether it means manufacturing products that exceed industry standards or working one-on-one with customers to ensure their project is completed successfully, and now we've taken that commitment one step further. Our new Engineering & Assembly Facility in Roanoke, VA will allow for faster turnaround times on custom products and will provide facilities for training and demonstration for our business partners and customers.



Products & Services

Fuji Electric's new Engineering & Assembly Facility will initially focus on three of our businesses:

- **Panel Assembly and Drive Configuration for AC Drives**
- **Demonstration, Modification and Testing of Uninterruptible Power Systems**
- **Auxiliary Power Supply and Door Systems for Transit Equipment**

Design Support

With a full staff of application engineers and technical support staff, our team is a valuable resource for you and can work with you to design an ideal solution using our world-class AC Drives. We offer custom design of panels for drive systems and pump panels, as well as Motor Control Panel Design.

Facts & Details

Our completely renovated 37,000 sq. ft. facility is located just 5 minutes from downtown Roanoke, with over 10,000 sq. ft. of office space dedicated to training and local staff.

Why Roanoke?

Fuji Electric's Engineering Team has been located in Roanoke, VA for nearly 15 years, and the abundance of local, skilled talent due to the proximity of highly ranked Colleges and Universities such as Virginia Tech, North Carolina State, and the University of Virginia is valuable as we add to our team. Roanoke's centralized location made it an ideal choice for this new facility, enabling us to quickly respond to customers and minimize lead time on the shipment of custom products.



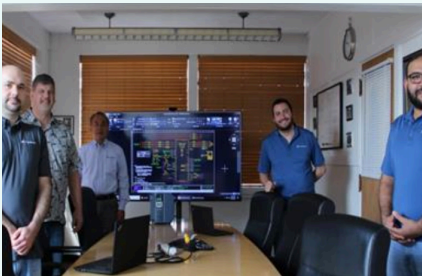
GLOBAL VISION, LOCAL FOCUS

AC Drives

Fuji Electric's lineup of AC Drives range from small general-purpose inverters to system drives for more complex applications. Our packaged solutions showcase our Engineering capabilities, and local production of these custom products will reduce both turnaround time and lead times on shipping. Our team of Engineers and Technical Support staff will be based in our Roanoke facility, and in addition to focusing on custom panel builds, the team will also handle training and customer demonstrations.



Application engineering and technical support for our AC Drives products is handled at the Roanoke Facility.



AC Drive - HMI Engineering



AC Drives Conversions



AC Drive Engineering Lab

Panels

Roanoke develops structured UL Certified panel for:

- General Industrial Use
- Pumps, Fans, Blowers
- HVAC and Refrigeration Equipment
- Irrigation Equipment

These industrial control panels are designed and produced in UL 508A facility:

- Meets rigorous, mechanical, electrical, and thermal standards
- Careful component selection and coordination
- Attentive placement and spacing of components
- Meticulous wire and cable selection and routing
- Conformance to the National Electrical Code (NEC) and Canadian Electrical Code (CEC) standards
- Widespread acceptance by regulatory authorities in all jurisdictions in the U.S. and Canada avoids red tagging of panels at job sites

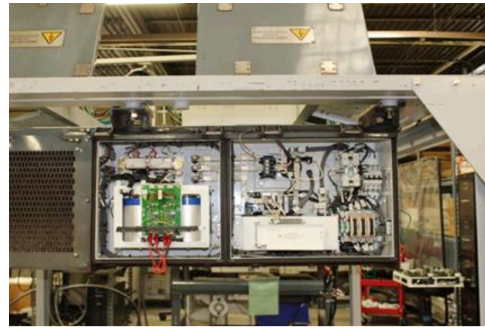




Uninterruptible Power Systems

Roanoke is the principal warehouse in the USA for all of our UL products for the North American market from 225 - 1000 kVA, and is our main location for product inventory, parts, light assembly, testing and diagnosis, and tech support.

Witness testing and product demonstrations are available in our Roanoke Facility, and training is conducted for staff and channel partners



Auxiliary Power Supply & Door Systems

Our APS Systems are used in some of the country's largest transit systems and surpass industry standards in terms of performance and maintenance requirements. Moving final production of these systems to Roanoke will result in faster turnaround times on customization and modifications, and reduced delivery times to customers.

Training

We offer a variety of options including Webinars, Zoom virtual training, and on-site training at customer facilities or local hotels. We also have a dedicated room at our facility capable of training up to twenty people. We regularly hold sessions for our AC Drives products, covering a wide variety of topics such as start up, troubleshooting, communications, and customized logic programming.



Fuji Electric
105 14th St NW
Roanoke, VA 24017

Tel 540.491.9625
americas.fujielectric.com