

# New TELLUS-HMI iPad App

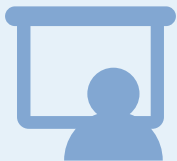


## TELLUS-HMI iPad App Overview

- Perform monitoring and operations on a commercially-available iPad installed with TELLUS-HMI by connecting the iPad to a PLC via Ethernet (TCP/IP). The dedicated app allows for programless connection.
- Use screen programs created with V-SFT version 6.
- Switch between screens using flick gestures and easily capture screenshots using the standard iOS screenshot function.
- A “TELLUS-HMI mode” that runs screen program files stored either on the iPad or in iCloud, and a “monitouch mode” that runs screen program files transferred from V-SFT are provided.

## Basic Information

- TELLUS-HMI iPad App is available from the App Store.
- Compatible with iPadOS 13, iPadOS 14, iPadOS 15
- Supported V-SFT: V6.1.1.0 or later
- Edit model selection: TELLUS version 4 (iPad) is recommended, or V9 series
- Supported PLC models: Models that support Ethernet TCP/IP connection or “No PLC connection”
- The hardware will be a commercially available iPad. If the application requires the environment where protection classes such as IP or ANSI/ISA standards are required, please use the HMI V9 series.



## Trial Period

TELLUS-HMI for iPad can be used with restrictions during a trial period while your license authentication application is being processed. The app becomes unusable either after 30 days from when the app is started for the first time or after starting the app for the 100th time.

**Check the PCID and then apply for license authentication.**