

# The Power of Fuji Electric HMIs

## Benefits of Our HMI Units

- Windows applications can be freely operated at production sites with our X1 Series
- All models in the V9 Series are UL Certified, and come standard with on-board Ethernet ports and SD card slots
- Our Technoshot Series features an eco-friendly LED back light with a sleek, slim structure

## Cost Saving Software

- Our TELLUS & V-Server software enables you to monitor and operate your plant, anywhere, anytime
- The V-SFT Configuration features new capabilities such as scheduled HMI activities, customized splash screen, PDF document viewer, and plenty more

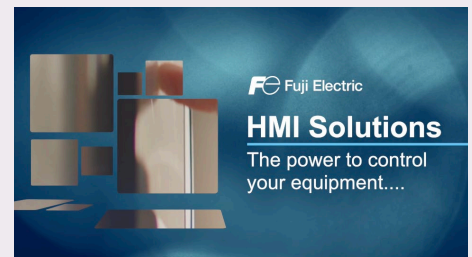
## Tap into Power

- X1 Series
- V9 Series
- Technoshot Series



## HMI Solutions

[Watch Now](#)



## Fuji Fun Facts



### Did you know...

An installation of our HMI with connection via MODBUS was implemented in a restaurant in Croatia to offer customers a 360° view of the city?



### Tips & Tricks

Use V-Server to pull data to a SQL database from PLCs through a Monitouch HMI going back decades. Your data in your hands!

## HMI Solutions

**Human Machine Interfaces (HMIs)**, include any device or software that allows you to interact with a machine. Fuji Electric's MONITOUCH HMI operator panels provide exceptional features, including remote monitoring capabilities and connectivity to popular PLCs including over 20 Ethernet drivers and 8 field bus options. We offer a wide range of displays to suit everything from basic projects to more advanced applications with our V9 Series, Technoshot Series, and our new X1 Series.



### MONITOUCH X1 Series

#### Industry-Leading Features

- IoT Connectivity
- Utilization of User Applications
- Standardized Web Browser
- Visibility and User-friendliness
- Inheritance of V-series Screen Assets
- Linkage with Smart Devices (Under Development)

[Learn More and Interact with the X1](#)



#### MONITOUCH X1 Series

- 1 12.1" 15.6" Widescreen



#### MONITOUCH HMI V9 Series

- 5.7" - 15"
- On-Board Ethernet Ports
- SD Card Slots

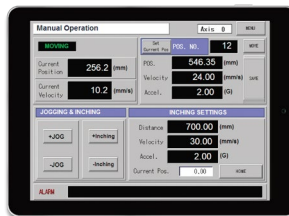


#### MONITOUCH Technoshot Series

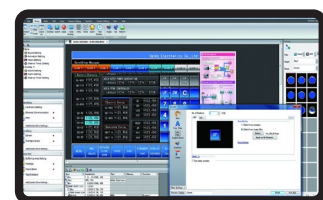
- 7" - 10"
- On-Board Ethernet Ports
- Simple Installation



#### Web Machine Interface



#### Tullus and V-Server



#### V-SFT Configuration Software