

MONITOUCH EXPRESS

V8 series – Compact and functional 8-inch models

F Fuji Electric

V808

Create your application in 8 inches

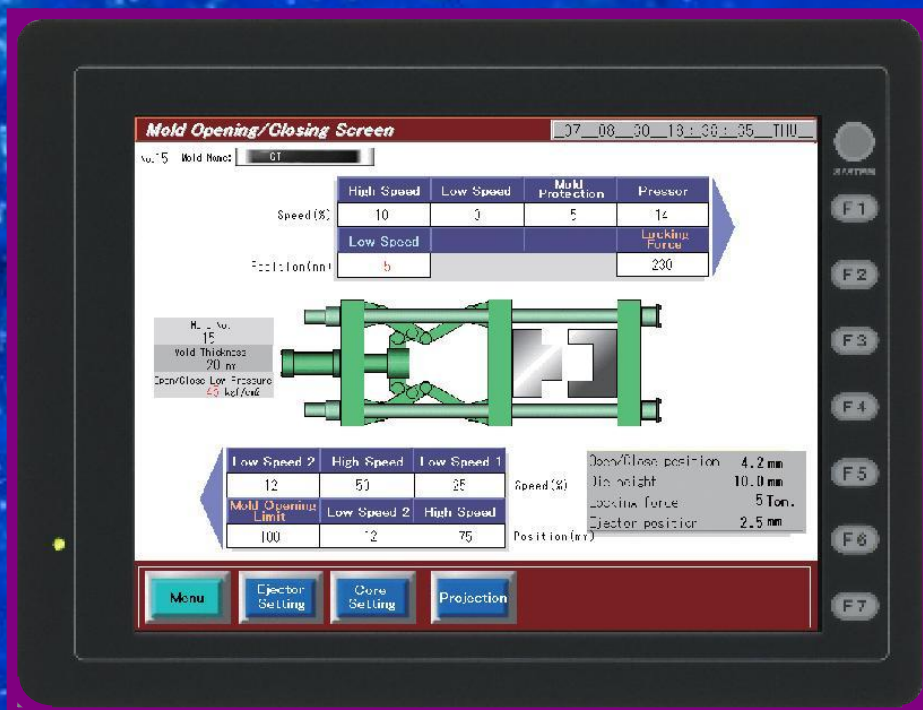
8.4 inches - 64K colors - TFT

3 serial ports - A/B USB ports - CF card slot

12.5M/4.5M FROM - 512K/128K SRAM

Different resolutions: SVGA(V808S) - VGA(V808C)

Ethernet with 'i' models



A touch screen to refresh your ideas

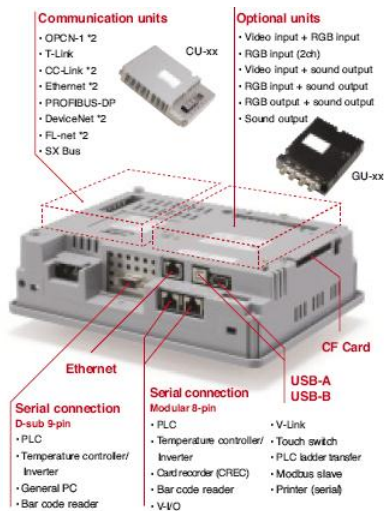
MONITOUCH EXPRESS

V808 Specifications

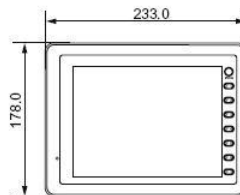
Model	V808ISD	V808SD	V808ICD	V808 CD
Display size	8.4 inches			
Display device	TFT color LCD			
Resolution	800x600 dots		640x480 dots	
Display colors	65,536 colors(without blinks) 32,768 colors(with blinks)			
Display memory	FROM (12.5MB)			FROM (4.5MB)
Backup memory	SRAM (512KB)			SRAM (128KB)
Ethernet	100BASE-TX /10BASE-T Built-in	Option (CU-03-3) *2	100BASE-TX /10BASE-T Built-in	Option (CU-03-3) *2
Communication I/F	Equipped			
Expansion I/F	Equipped	—	—	—
CF card I/F	Equipped			
USB I/F	Type A and B(Ver1.1)			
Options	Video (4ch)	GU-00	—	—
	RGB input	GU-01	—	—
	RGB output	GU-02	—	—
	Video (2ch)+RGB input	GU-10	—	—
	RGB input (2ch)	GU-11	—	—
	Sound output	GU-00 ~ 03	—	—
	Communication unit	CU-00 ~ 08		
I/O unit	V-I/O			
Serial interface	D-Sub 9-pin CN1	RS-232C, RS-422/485, Asynchronous Data length: 7 bits, 8 bits, Parity: even, odd, none Stop bit: 1 bit, 2 bits Baud rate: 4800, 9600, 19200, 38400, 57600, 76800, 115200, 187500bps*3		
	Modular 8-pin MJ1/MJ2	RS-232C • RS-422/485(2-wire), Asynchronous Data length: 7 bits, 8 bits Parity: even, odd, none, Stop bit: 1 bit, 2 bits Baud rate: 4800, 9600, 19200, 38400, 57600, 76800, 115200		
Compatibility	CE Marking	EN61000-6-2, EN61000-6-4		
	UL/cUL	UL508, UL1604(Class1, Division2)		
	RoHS directive	Complied		

*2 Under development *3 When connected with SIEMENS MPI

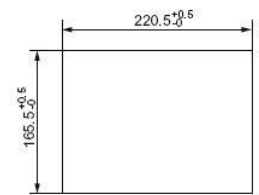
V808 External Dimensions (Unit : mm)



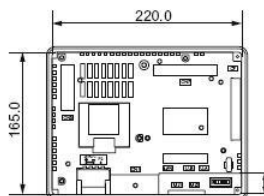
• Front View



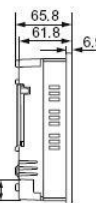
• Panel Cut-out Dimensions



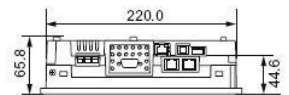
• Rear View



• Side View



• Bottom View



Fuji Electric Corp. of America

www.monitouch.com

47520 Westinghouse Drive
Fremont, CA 94539
Tel: (510) 403-7863
Fax: (510) 933-1672
E-mail: hmi-group@fecoa.fujielectric.com
Website: www.americas.fujielectric.com

Overseas Manufacturing Plant:
Hakko Electronics Co., Ltd. – A Fuji Electric Company
238 Kamikashiwano-machi, Hakusan-shi,
Ishikawa 924-0035, Japan