

PLC 5 Ethernet Connection

Monitouch HMI Technical Note TN-MH-0007a

Table of Contents

1. <i>Introduction</i>	2
2. <i>Requirements</i>	2
3. <i>Configuring RSLinx</i>	2
4. <i>Configuring RSLogix 5</i>	3
5. <i>For More Information</i>	4

Monitouch HMI
Division of Fuji Electric Corp. of America

55 Westech Drive

Tyngsboro, MA 01879

Phone: (978) 649-8383

Toll Free: (866) 838-4031

Fax: (978) 649-0090

E-Mail: Support@MonitouchHMI.com

Website: www.MonitouchHMI.com

1. Introduction

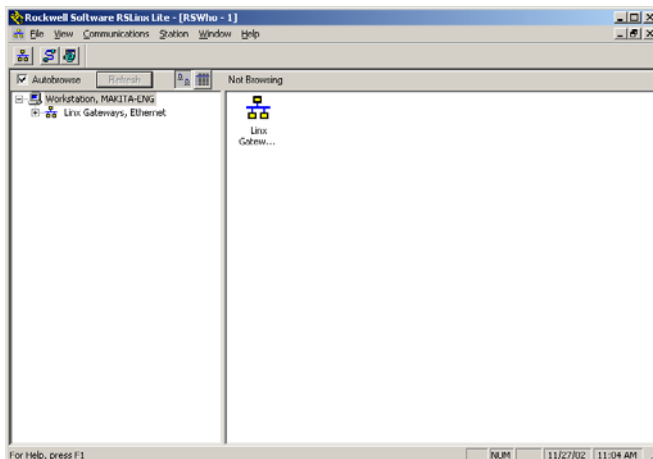
This document describes how to configure an Allen Bradley PLC 5 for communications to a V7i over Ethernet. The PLC used for this is a PLC 5/20E, but a PLC 5/40E or PLC 5/80E should work in the same manner.

2. Requirements

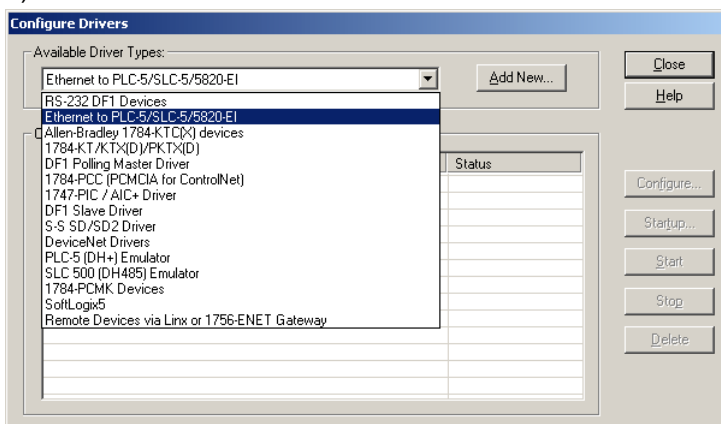
- 1) RSLogix 5 and RSLinx will be needed to program the PLC and configure the Ethernet port. For this an RS232C programming cable is needed.
- 2) A transceiver will need to be installed into the AUI port on the PLC 5.
- 3) An Ethernet cable will be needed for communications. Allen Bradley recommends against using a cross-over cable for direct connection to a PC. Their documentation specifies a straight cable to a hub or switch.

3. Configuring RSLinx

- 1) Open RSLinx to configure communication setting.



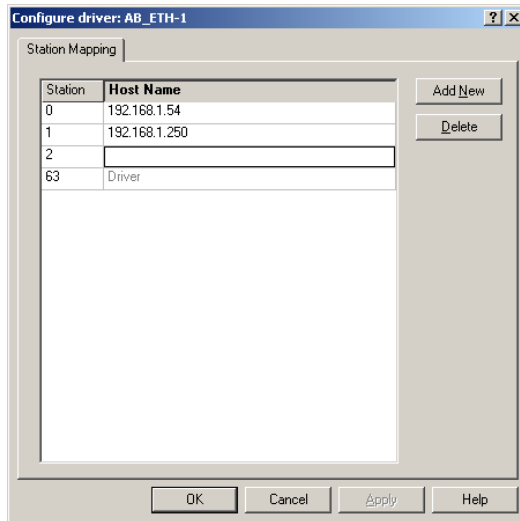
- 2) Add new drivers:



For RS232C communications, select "RS-232 DF1 Devices".

For Ethernet communication, select "Ethernet to PLC-5/SLC-5/5820-E1".

3) For the Ethernet configuration the following box should appear:

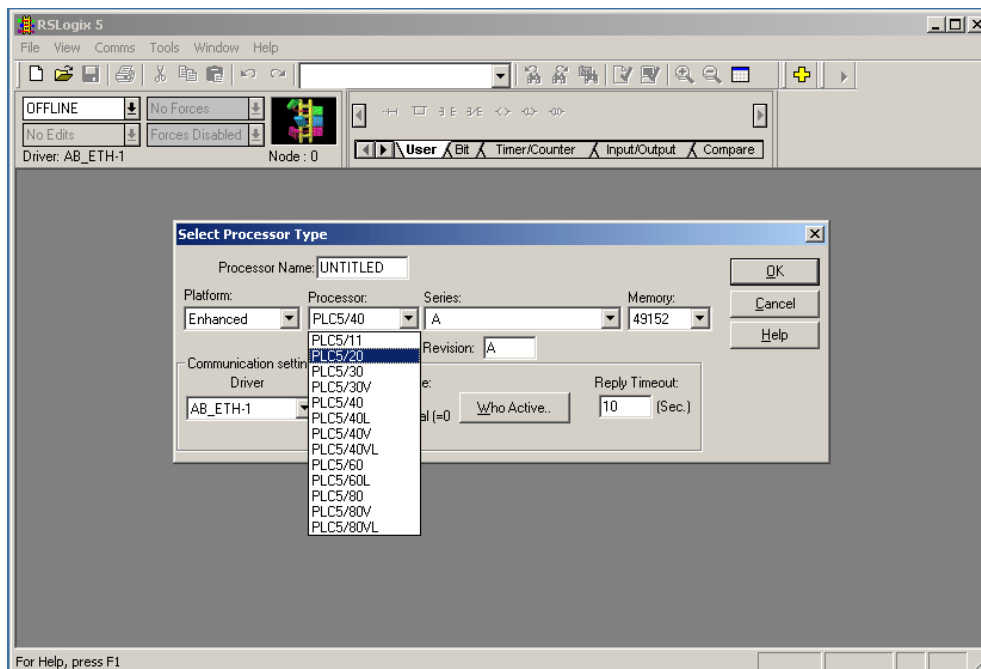


Enter the IP address for the PLC in the Host Name area.

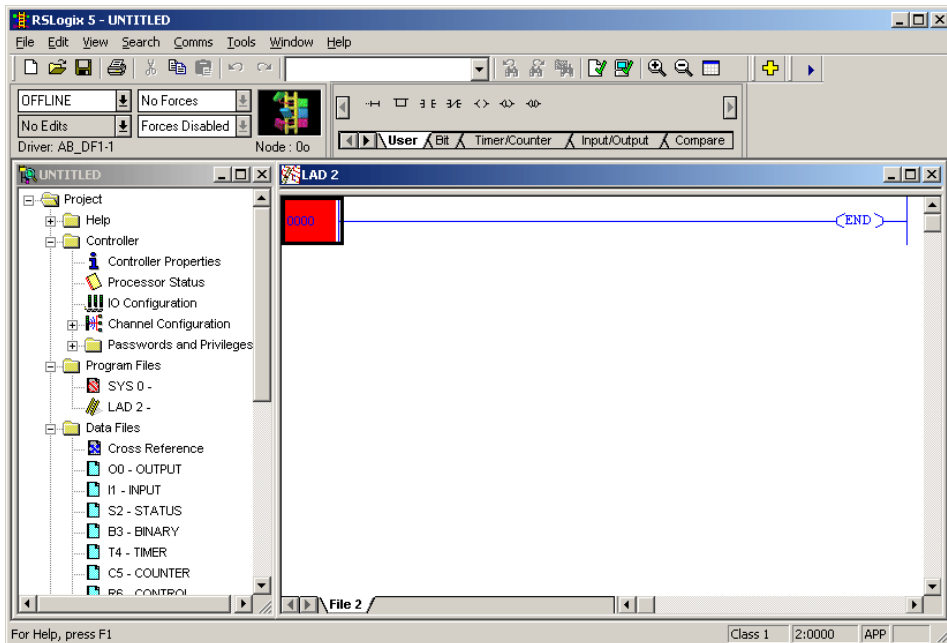
For the RS-232 driver, click the Auto-Configure button with the cable connected to the PLC. The settings should be automatically set.

4. Configuring RSLogix 5

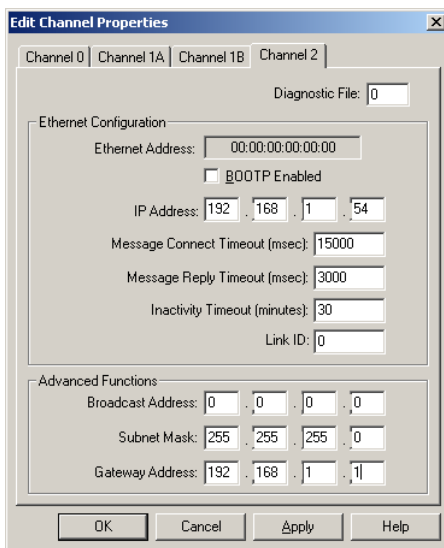
1) Start RSLogix 5 and create a new project. Select the correct processor type. You can also select "Who Active" to browse the PLCs on the network.



2) Open the Channel Configuration:



3) Under "Channel 2", configure the IP settings of the PLC:



4) Now you can download the program to the PLC. You will need to set the driver for communications in RSLogix 5. You can do this using the Comms – Who Active Go Online. Then select the PLC that should show up under the Ethernet driver.

5. For More Information

1. Manuals (Monitouch)
 - PLC Connection Manual, Chapter 2
2. Allen Bradley Information
 - Website <http://www.ab.com>