

# Configure Buffering Area for SRAM

## Monitouch HMI Technical Note TN-MH-0013a

### Table of Contents

1. <i>Introduction</i> .....	2
2. <i>Requirements</i> .....	2
3. <i>Configuration in V-SFT</i> .....	2
4. <i>Configuring on the Panel</i> .....	4
5. <i>For More Information</i> .....	4

**Monitouch HMI**  
**Division of Fuji Electric Corp. of America**

55 Westech Drive  
Tyngsboro, MA 01879  
Phone: (978) 649-8383  
Toll Free: (866) 838-4031  
Fax: (978) 649-0090  
E-Mail: [Support@MonitouchHMI.com](mailto:Support@MonitouchHMI.com)  
Website: [www.MonitouchHMI.com](http://www.MonitouchHMI.com)

**1. Introduction**

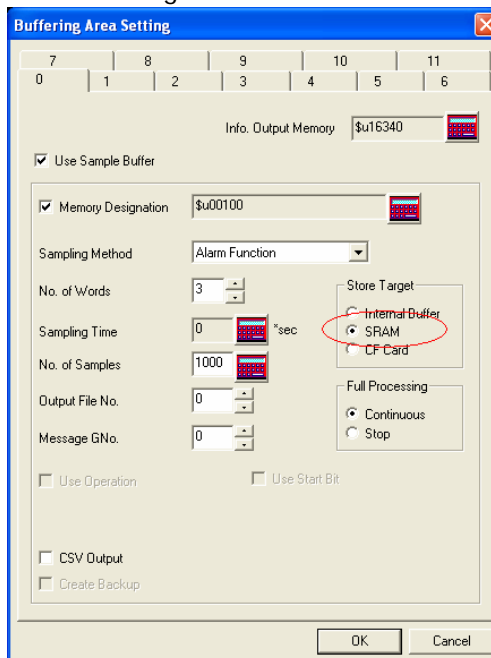
This document describes how to configure a Buffering Area to use Static RAM (SRAM). This will retain the buffered data in the event of a power loss. This is especially useful for alarm buffers.

**2. Requirements**

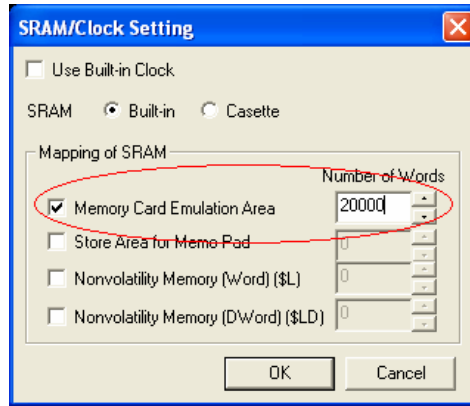
- 1) Any V7 series model or an older model with a SRAM cassette (e.g. V6EM-RS for V6 series models).
- 2) V-SFT programming software.

**3. Configuration in V-SFT**

- 1) Open V-SFT to configure Buffering Area. Click System Setting – Buffering Area Setting. Configure Buffer for your data. Set the Store Target for SRAM.



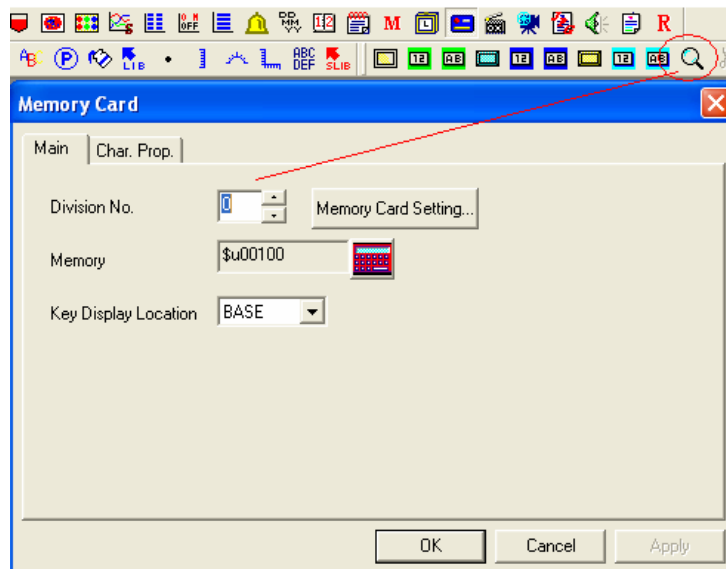
- 2) Configure SRAM memory.
  - Click System Setting – SRAM/Clock Setting. Check the setting for Memory Card Emulation Area and set the number of words to be enough to store the buffered data.



- Calculations for number of words:

Record Type	Bytes	Example - (3 words / 1000 samples)
Bit Synchronize	(# words + 2) * Samples	(3+2) * 1000 = 5000 words
Constant Sample	(# words + 2) * Samples	(3+2) * 1000 = 5000 words
Bit Sample	3 * Samples	3 * 1000 = 3000 words
Alarm Function	3 * Samples + 15 + # words * 96	3*1000+15+3*96 = 3303 words

- 3) Configure Memory Card Mode.
  - On the screen, click Part – Memory Card. Click on the Magnifying Glass (Detail) button to register the Memory Card Mode. Then click OK to accept the default properties.



- Then click the Card Format Switch on the menu bar. Place the switch anywhere on the screen.



#### **4. *Configuring on the Panel***

- 1) When the application data has been downloaded to the Monitouch panel, you will get an Error 163. This is an indication that the SRAM memory needs to be formatted on the panel. To do this, go to the System Menu (press System, then F1). Press the switch SRAM/Clock. Press the Format switch then the Execute switch. Then press the Main Menu switch to get back to the System Menu. Then press System and F1 to start the application.
- 2) Once the application is running, go to the screen with the Card Format switch. Press the switch to format the memory card emulation area.

Note: These steps will only need to be done the first time the application is downloaded to a panel. After the initial download, these steps will clear the SRAM, emptying the data from the buffers.

#### **5. *For More Information***

1. Manuals (Monitouch)
  - Buffering Area: Reference Manual – Function, Chapter 10
  - Memory Card Mode: Reference Manual – Function, Chapter 25